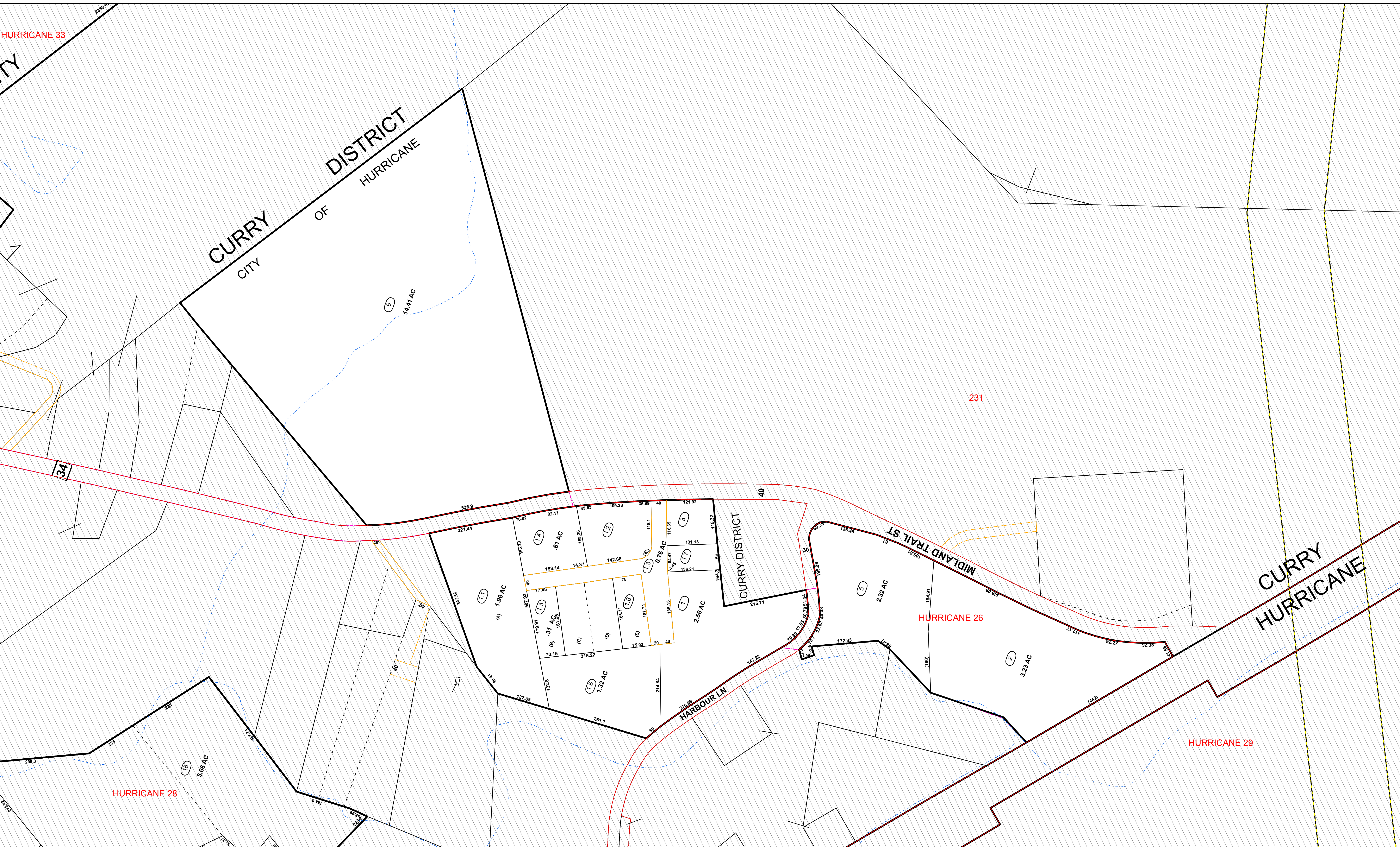


HURRICANE 33

CURRY CITY OF DISTRICT HURRICANE

CURRY HURRICANE



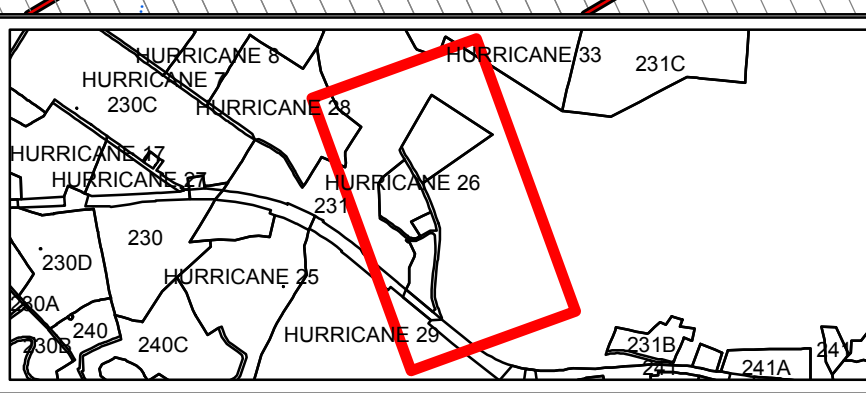
PREPARED BY
THE MAPPING / GIS STAFF OF:

SHERRY L. HAYES
PUTNAM COUNTY ASSESSOR
3389 WINFIELD ROAD
WINFIELD, WV 25213
PHONE: (304) 586-0206
FAX: (304) 586-0226

FOR TAX PURPOSES ONLY
ALL TAX MAPS CREATED UNDER THE PROVISIONS OF REAPPRAISAL LEGISLATION ARE THE PROPERTY OF PUTNAM COUNTY WEST VIRGINIA AND THE REPRODUCTION, COPYING, DISTRIBUTION OR SALE OF SUCH TAX MAPS OR ANY COPIES THEREOF WITHOUT THE WRITTEN PERMISSION OF THE PUTNAM COUNTY ASSESSOR IS PROHIBITED BY LAW.

Legend	
— Road ROW	- - - Lot Lines
— Parcel Boundary	— Road Easement
— Rail ROW	— Parcel-Easement
— Road-Rail ROW	— Parcel-Road ROW
— District	— Parcel Hook
— Utility_Easement	23 Parcel Number
	001 Routing Number
	(12) Deed Lot Number

Revisions	
1.	10/15/09 UPDATE SUPPLIED TO STATE (PAW)
2.	8/8/2013 PRINTED MAPS FOR DRAWER - PAW
3.	11/06/2013 UPDATE SUPPLIED TO STATE (PAW)
4.	
5.	
6.	
7.	



PUTNAM COUNTY
STATE OF WEST VIRGINIA
OFFICE OF ASSESSOR

District **HURRICANE TOWN**
Sheet No.: **HURRICANE 26**
Date, Aerial Photography: **2010**
Scale: **1" = 100'**