

SEE SPENCER DIST. MAP 21

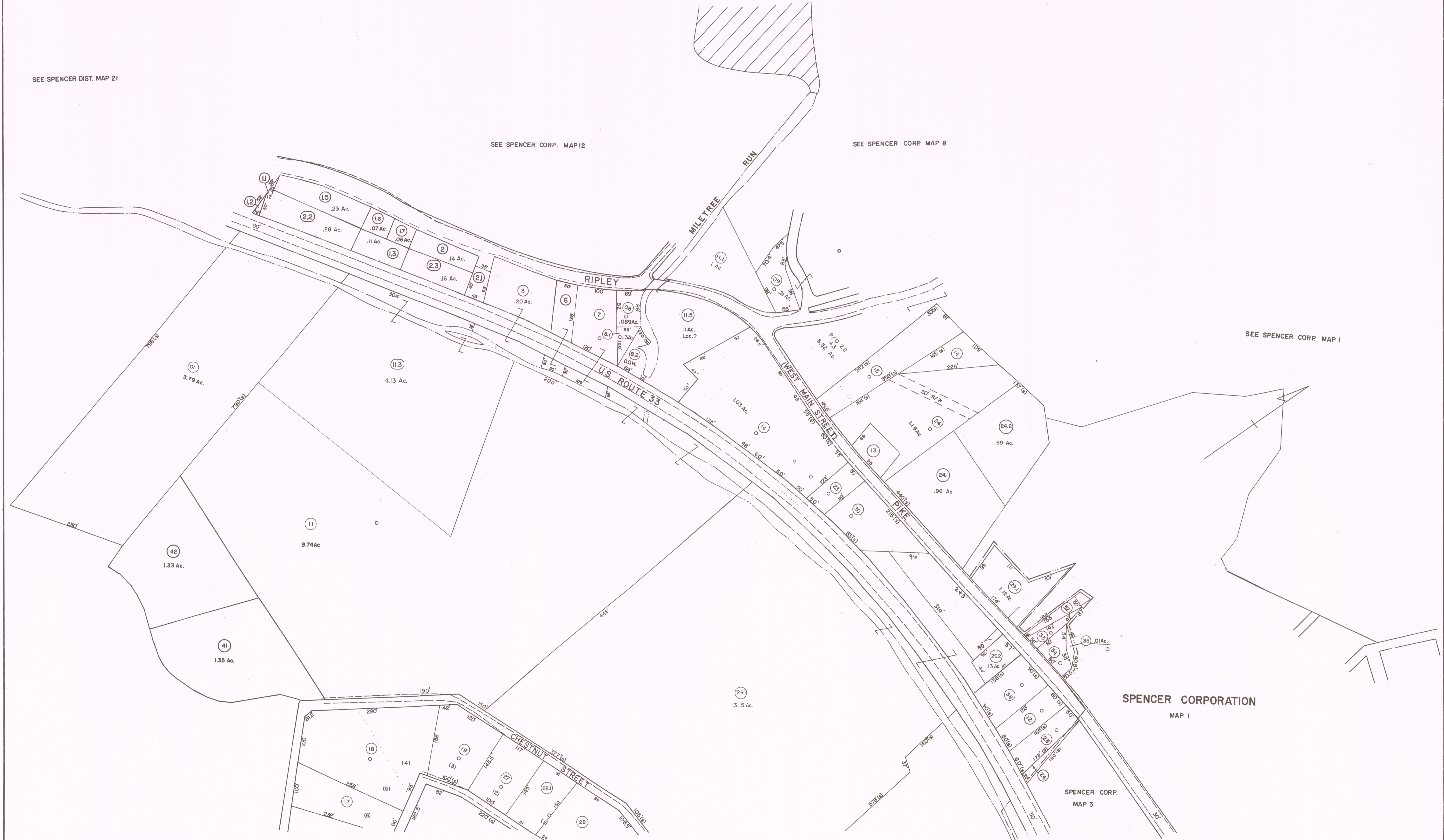
SEE SPENCER CORP. MAP 12

SEE SPENCER CORP. MAP 8

SEE SPENCER CORP. MAP 1

SPENCER CORPORATION
MAP 1

SPENCER CORP.
MAP 3



FOR TAX PURPOSES ONLY

Prepared by
L. ROBERT KIMBALL
Consulting Engineer
Ebensburg, Pennsylvania

LEGEND

Property line	-----	Original lot line	-----
Edge of pavement or roadway	-----	Deed lot number in parenthesis	(15)
Corporation line	-----	Parcel or index number in circle	(2)
District line	-----	Improvement	○
County line	-----	Railroad	+++++

REVISIONS

1	1/12/62		9	Revised to 11-1-62	REB	17	6/1/06	H&S
2	5-1-72	0#P	10	OGIS 1-15-92	JEB	18	10-9-08	H&S
3	10-77		11	EXCALIBUR GRAPHICS 7/93		19	4/22/11	S&H
4	4-8-90		12	EXCALIBUR GRAPHICS 6/95		20	2/27/16	S&H
5	Revised to 7-8-1		13	1/30/2000	S&H	21		
6	REV TO 7-1-82	NCS	14	3/31/2001	S&H	22		
7	T. 7-1-87 C.P.		15	3/17/2002	S&H	23		
8	Revised to 8-24-88	RB	16	5/13/2003	S&H	24		

STATE OF WEST VIRGINIA
COUNTY OF ROANE
Office of Assessor

SPENCER DISTRICT
SHEET 22-A

Date, Aerial Photography: APRIL, 1960
Photo No: 60.16-02
Date, Map: SEPT., 1960
Scale: 1"=100'