

11

ALEXANDER ROAD

THIS AREA SHOWN ON MAP NO. 6R
1"=400'

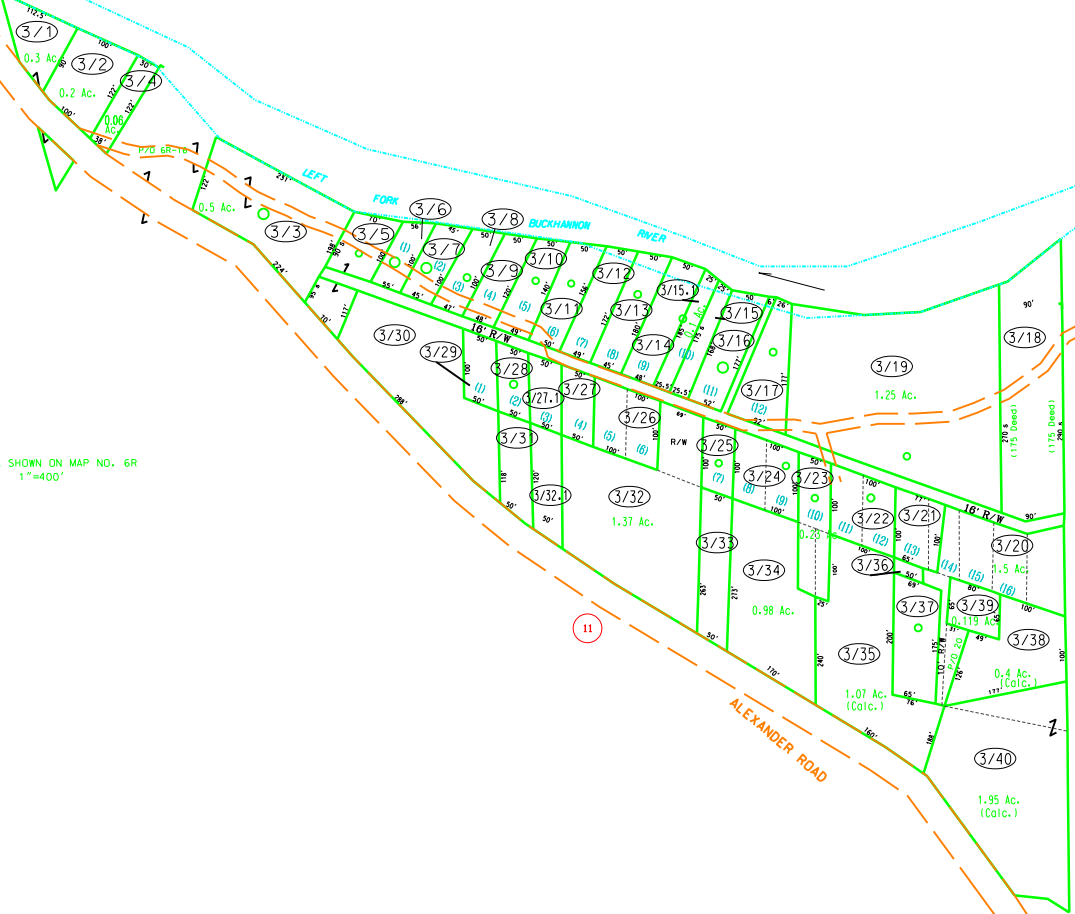
THIS AREA SHOWN ON MAP NO. 6R
1"=400'

LEFT

BUCKHANNON RIVER

11

ALEXANDER ROAD



For Tax Purposes Only
 Prepared by
 Upshur County Assessor Office
 Dustin Zickefoose : Assessor
 Hugh P McGee, Jr. : Mapper

LEGEND	
Property line	———
Edge of pavement or roadway	- - - - -
Corporation line	- · - · -
District line	- - - - -
County line	—————
Original lot line	- - - - -
Deed lot number	(15)
Parcel or index number	⊙
Improvement	○
Roadway	———

REVISIONS
1
2
3
4
5
6
7
8

RESTRICTION

All tax maps created under the provisions of reappraisal legislation are the property of Upshur County West Virginia and the reproduction, copying, distribution or sale of such tax maps or any copies thereof without the written permission of the Upshur County Assessor is prohibited by law.

KEY MAP

UPSHUR COUNTY
 STATE OF WEST VIRGINIA
 Office of Assessor

DISTRICT **BANKS**
ALEXANDER
 PAUL WITTY LOTS
 SHEET NO: 3
 Date Aerial Photography: _____ Date Map: 11-5-87
 Photo No: _____ Scale: 1" = 100'