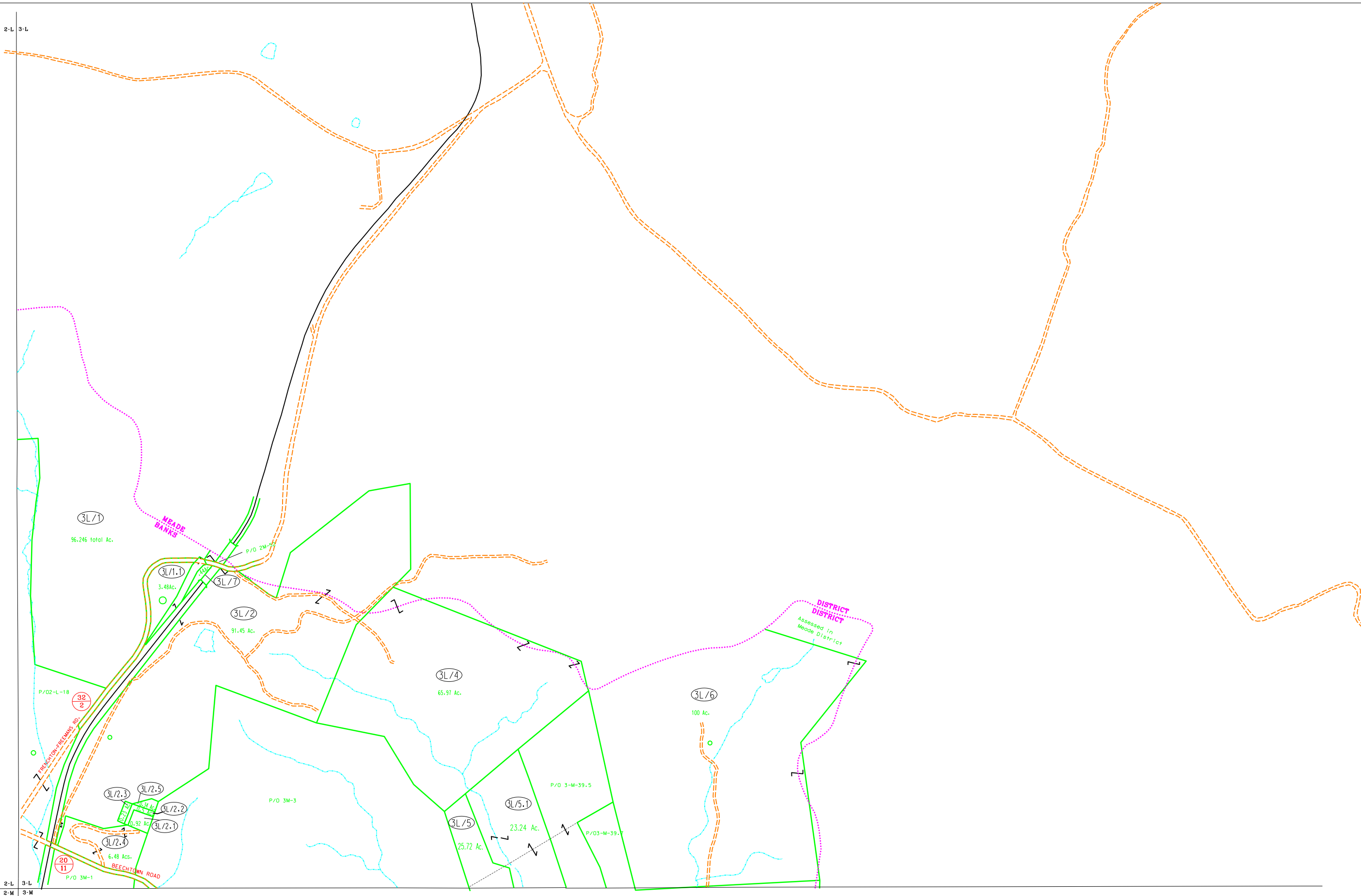


2-L 3-L

2-L 3-L  
2-M 3-M



For Tax Purposes Only

Prepared by  
Upshur County Assessor Office  
Dustin Zickefoose : Assessor  
Hugh P McGee, Jr. : Mapper

LEGEND

Property line	—————	Original lot line	- - - - -
Edge of pavement or roadway	— · — · —	Deed lot number	(15)
Corporation line	— · — · —	Parcel or index number	99
District line	— · — · —	Improvement	o
County line	— · — · —	Railroad	— + — + —

REVISIONS

1	7/6/2011	HPM
2	9/25/2012	HPM
3	5-19-2016	HPM
4		
5		
6		
7		
8		

RESTRICTION

All tax maps created under the provisions of reappraisal legislation are the property of Upshur County West Virginia and the reproduction, copying, distribution or sale of such tax maps or any copies thereof without the written permission of the Upshur County Assessor is prohibited by law.

KEY MAP



UPSHUR COUNTY  
STATE OF WEST VIRGINIA  
Office of Assessor

DISTRICT

BANKS

SHEET NO: 3-L

Date, Aerial Photography: 4-24-62  
Photo No:

Date, Map: 5-21-63  
Scale: 1" = 400'