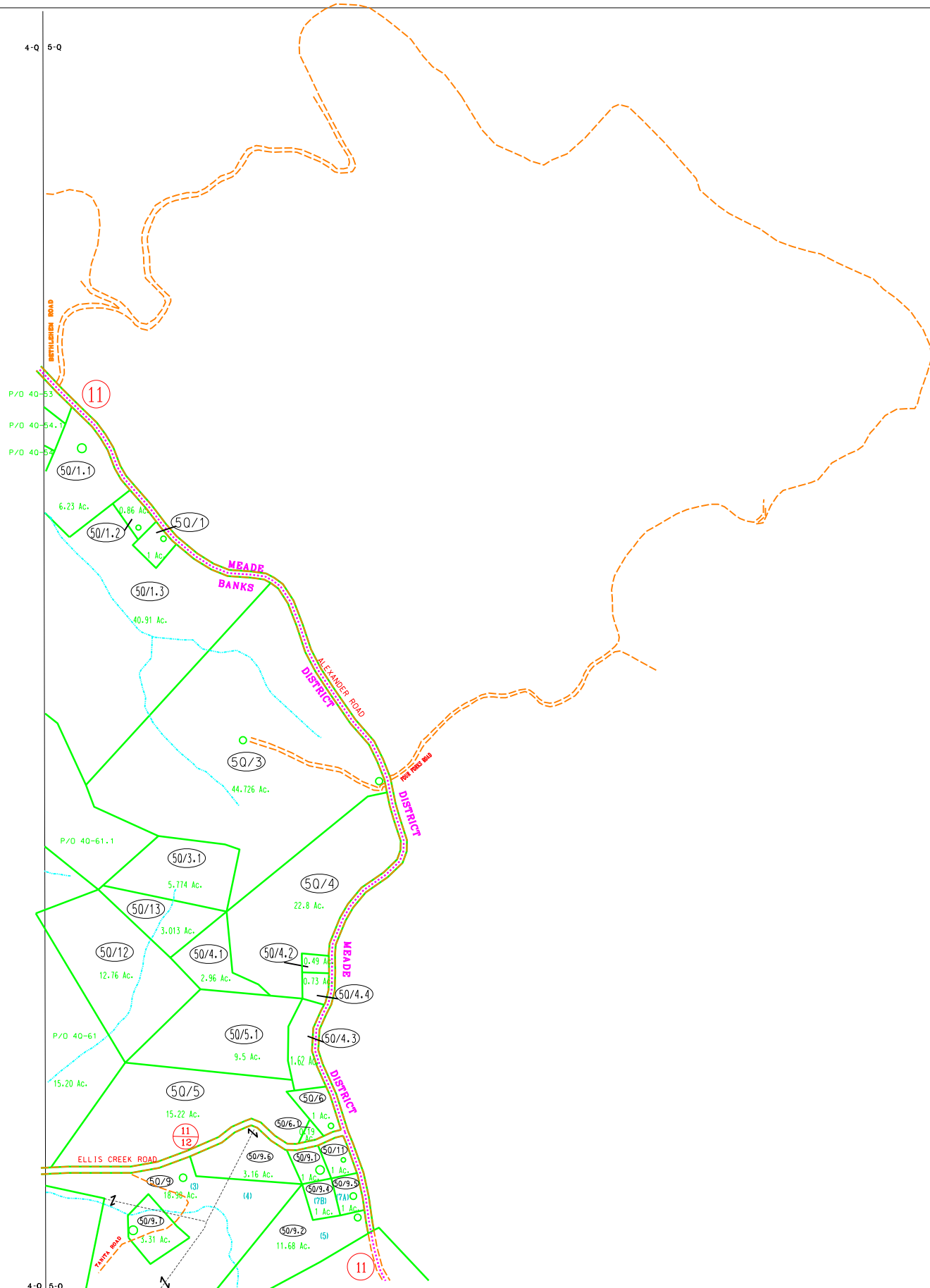


4-Q 5-Q



4-Q 5-Q
4-R 5-R

5-Q
5-R



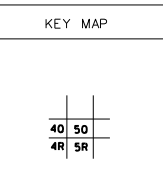
For Tax Purposes Only
Prepared by
Upshur County Assessor Office
Donald W Rice : Assessor
Hugh P McGee, Jr. : Mapper

LEGEND	
Property line	-----
Edge of pavement or roadway	-----
Corporation line	-----
District line	-----
County line	-----
Original lot line	----- (15)
Deed lot number	(15)
Parcel or index number	⊙
Improvement	○
Railroad	+++++

REVISIONS	
1	09-18-2001 DWR
2	8/18/2004 HPM
3	9/27/2005 HPM
4	9/13/2006 HPM
5	6/29/2007 HPM
6	9/13/2008 HPM
7	12/10/2010 HPM
8	1-7-2016 HPM

RESTRICTION

All tax maps created under the provisions of reappraisal legislation are the property of Upshur County West Virginia and the reproduction, copying, distribution or sale of such tax maps or any copies thereof without the written permission of the Upshur County Assessor is prohibited by law.



UPSHUR COUNTY
STATE OF WEST VIRGINIA
Office of Assessor

DISTRICT
BANKS
SHEET NO: 5-Q
Date, Aerial Photography: 4-24-62
Photo No: UP-3-7
Date, Map: 12-17-62
Scale: 1" = 400'