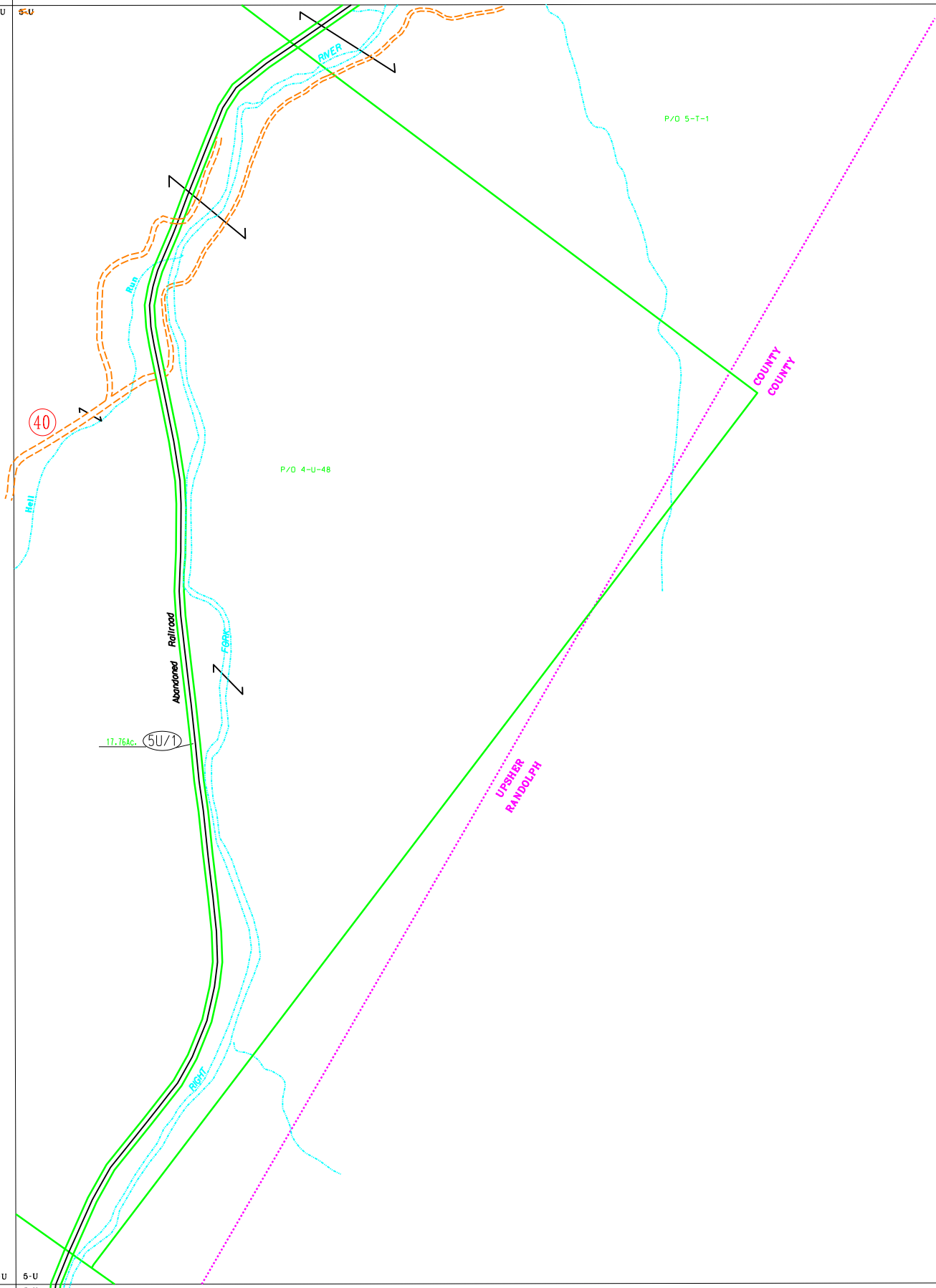


4-T 5-T  
4-U 5-U

4-U 5-U  
4-V 5-V



For Tax Purposes Only  
 Prepared by  
 Upshur County Assessor Office  
 Donald W Rice : Assessor  
 Hugh P McGee, Jr. : Mapper

LEGEND

Property line	—————	Original lot line	-----
Edge of pavement or roadway	-----	Deed lot number	(15)
Corporation line	-----	Parcel or index number	99
District line	-----	Improvement	o
County line	-----	Railroad	—+—+—+—

REVISIONS

1
2
3
4
5
6
7
8

RESTRICTION

All tax maps created under the provisions of reappraisal legislation are the property of Upshur County West Virginia and the reproduction, copying, distribution or sale of such tax maps or any copies thereof without the written permission of the Upshur County Assessor is prohibited by law.

KEY MAP



UPSHUR COUNTY  
 STATE OF WEST VIRGINIA  
 Office of Assessor

DISTRICT

BANKS

SHEET NO: 5-U

Date, Aerial Photography: 4-24-62  
 Photo No: UP-3-5

Date, Map: 12-11-62  
 Scale: 1" = 400'