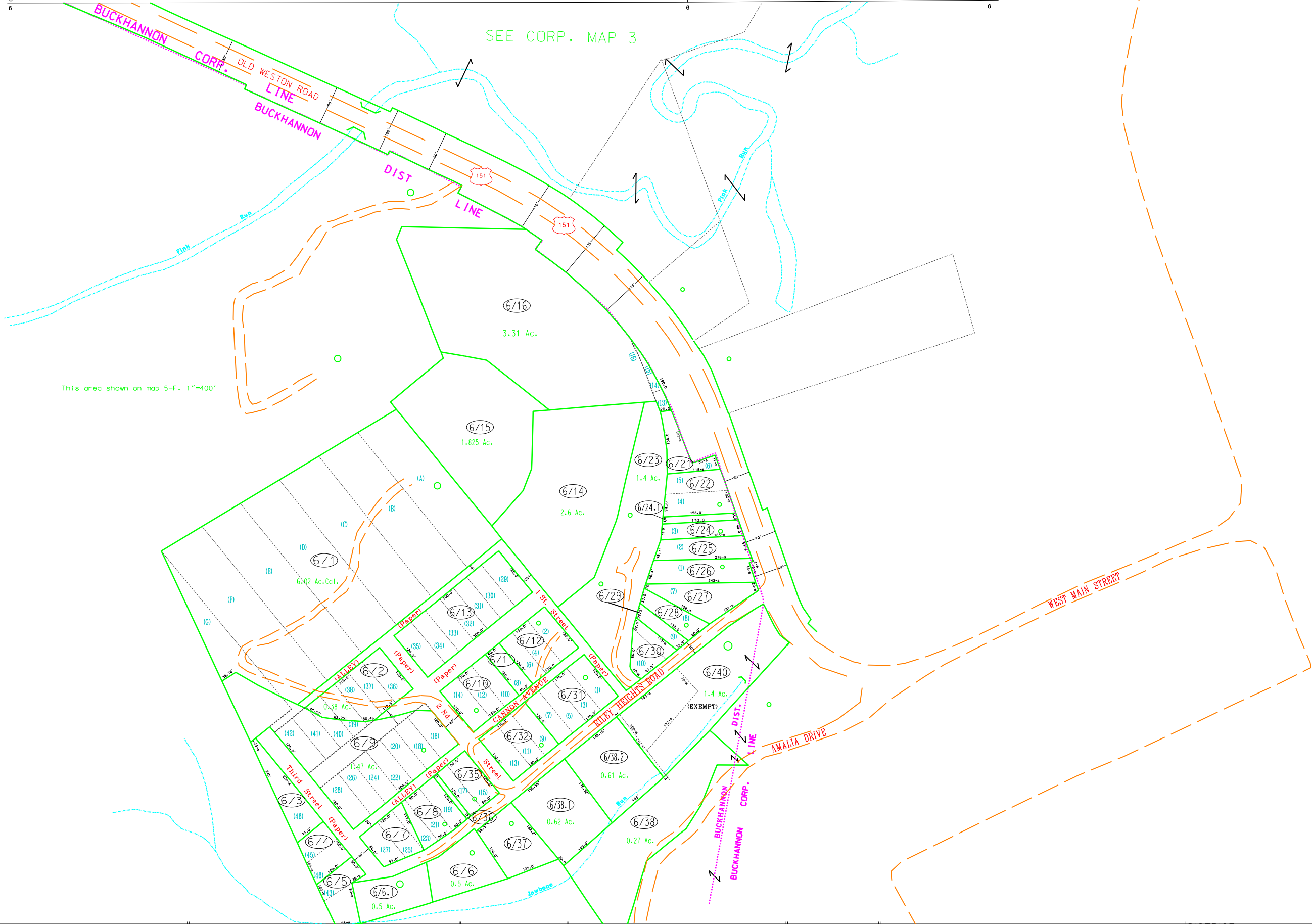


SEE CORP. MAP 3



This area shown on map 5-F, 1"=400'

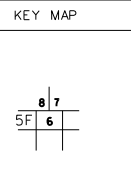
For Tax Purposes Only
 Prepared by
 Upshur County Assessor Office
 Dustin Zickefoose : Assessor
 Hugh P McGee, Jr. : Mapper

LEGEND	
Property line	Original lot line
Edge of pavement or roadway	Deed lot number (15)
Corporation line	Parcel or index number (99)
District line	Improvement (o)
County line	Railroad

REVISIONS	
1	12-09-2002 DWR
2	8/1/2007 HPM
3	9/13/2008 HPM
4	3/5/2009 HPM
5	12/8/2011 HPM
6	9/17/2012 HPM
7	10-25-2013 HPM
8	6-30-2014 HPM

RESTRICTION

All tax maps created under the provisions of reappraisal legislation are the property of Upshur County West Virginia and the reproduction, copying, distribution or sale of such tax maps or any copies thereof without the written permission of the Upshur County Assessor is prohibited by law.



UPSHUR COUNTY
 STATE OF WEST VIRGINIA
 Office of Assessor

DISTRICT BUCKHANNON
 SHEET NO: 6
 Date, Aerial Photography: 4-25-62
 Photo No: UP-3-14
 Date, Map: 9-11-64
 Scale: 1" = 100'