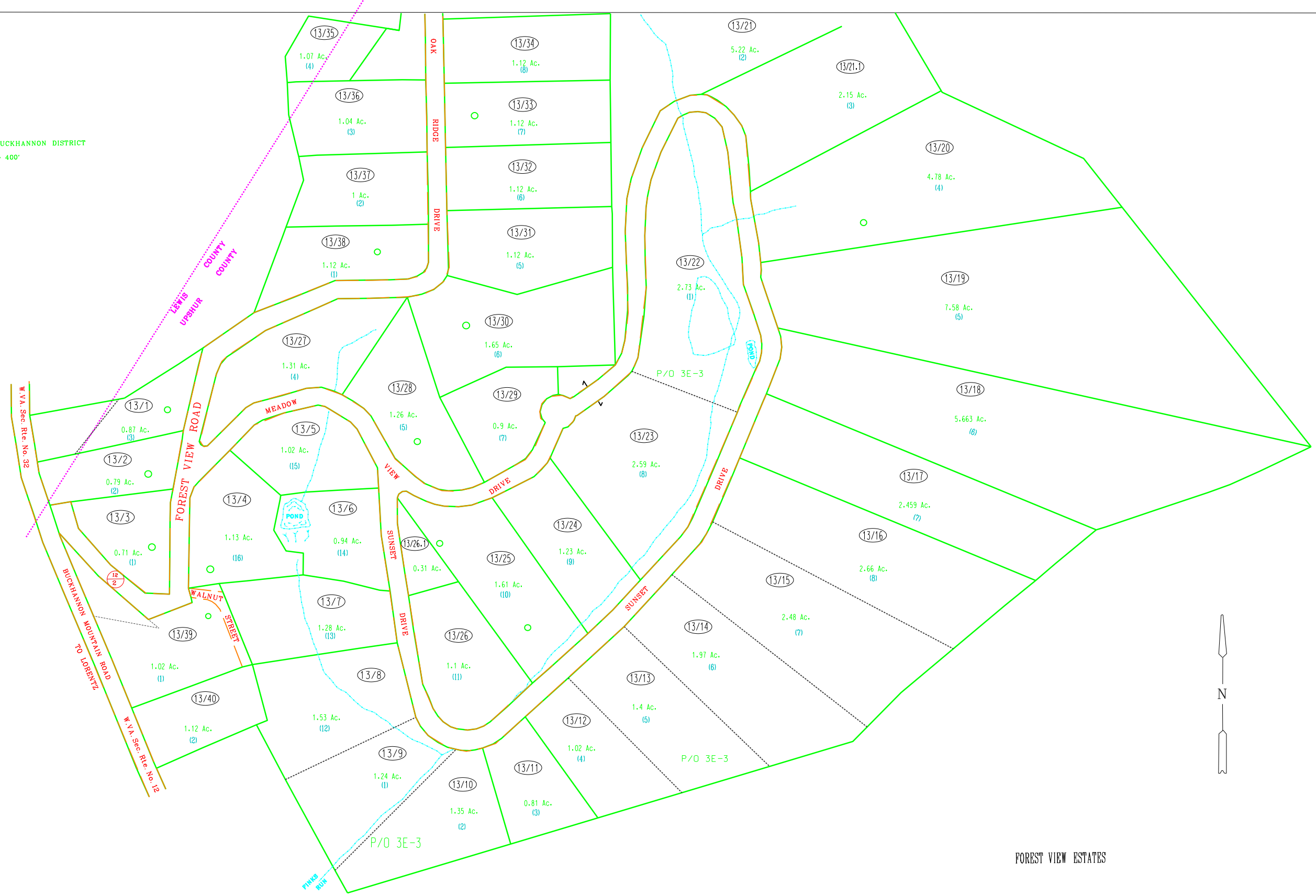


SEE MAP 3E BUCKHANNON DISTRICT
1" = 400'



FOREST VIEW ESTATES

For Tax Purposes Only
Prepared by
Upshur County Assessor Office
Dustin Zickefoose : Assessor
Hugh P McGee, Jr. : Mapper

LEGEND	
Property line	Original lot line
Edge of pavement or roadway	Deed lot number (15)
Corporation line	Parcel or index number
District line	Improvement
County line	Railroad

REVISIONS	
1	11-12-2004 HPM
2	3-5-2009 HPM
3	5-7-2012
4	10-25-2013 HPM
5	
6	
7	
8	

RESTRICTION

All tax maps created under the provisions of reappraisal legislation are the property of Upshur County West Virginia and the reproduction, copying, distribution or sale of such tax maps or any copies thereof without the written permission of the Upshur County Assessor is prohibited by law.

KEY MAP	
14	
3E 13 3E	
3E	

UPSHUR COUNTY
STATE OF WEST VIRGINIA
Office of Assessor

DISTRICT BUCKHANNON
SHEET NO: 13
Date, Aerial Photography: Photo No:
Date, Map: 4-15-81
Scale: 1" = 100'