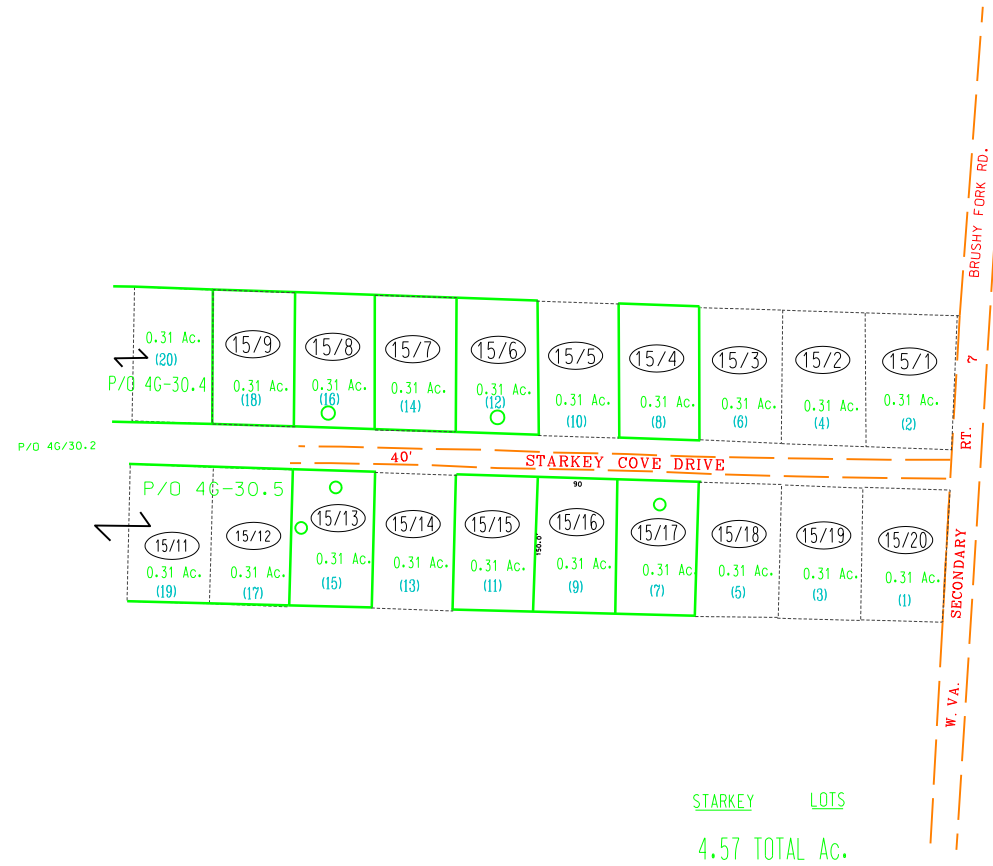


SEE MAP 4G--BUCKHANNON DISTRICT
1"=400'



For Tax Purposes Only

Prepared by
Upshur County Assessor Office
Dustin Zickefoose : Assessor
Hugh P McGee, Jr. : Mapper

LEGEND

Property line	---	Original lot line	---
Edge of pavement or roadway	---	Deed lot number	(15)
Corporation line	---	Parcel or index number	Ⓢ
District line	---	Improvement	○
County line	---	Railroad	---

REVISIONS

NO.	DATE	BY	DESCRIPTION
1	10-12-2000	DWR	
2	5/21/2007	HPM	
3	3/5/2009	HPM	
4	2-27-2014	HPM	
5			
6			
7			
8			

RESTRICTION

All tax maps created under the provisions of reappraisal legislation are the property of Upshur County West Virginia and the reproduction, copying distribution or sale of such tax maps or any copies thereof without the written permission of the Upshur County Assessor is prohibited by law.

KEY MAP



UPSHUR COUNTY

STATE OF WEST VIRGINIA

Office of Assessor

DISTRICT

BUCKHANNON DIST.

SHEET NO: 15

Date, Aerial Photography:
Photo No:

Date, Map: 4-22-81
Scale: 1" = 100'