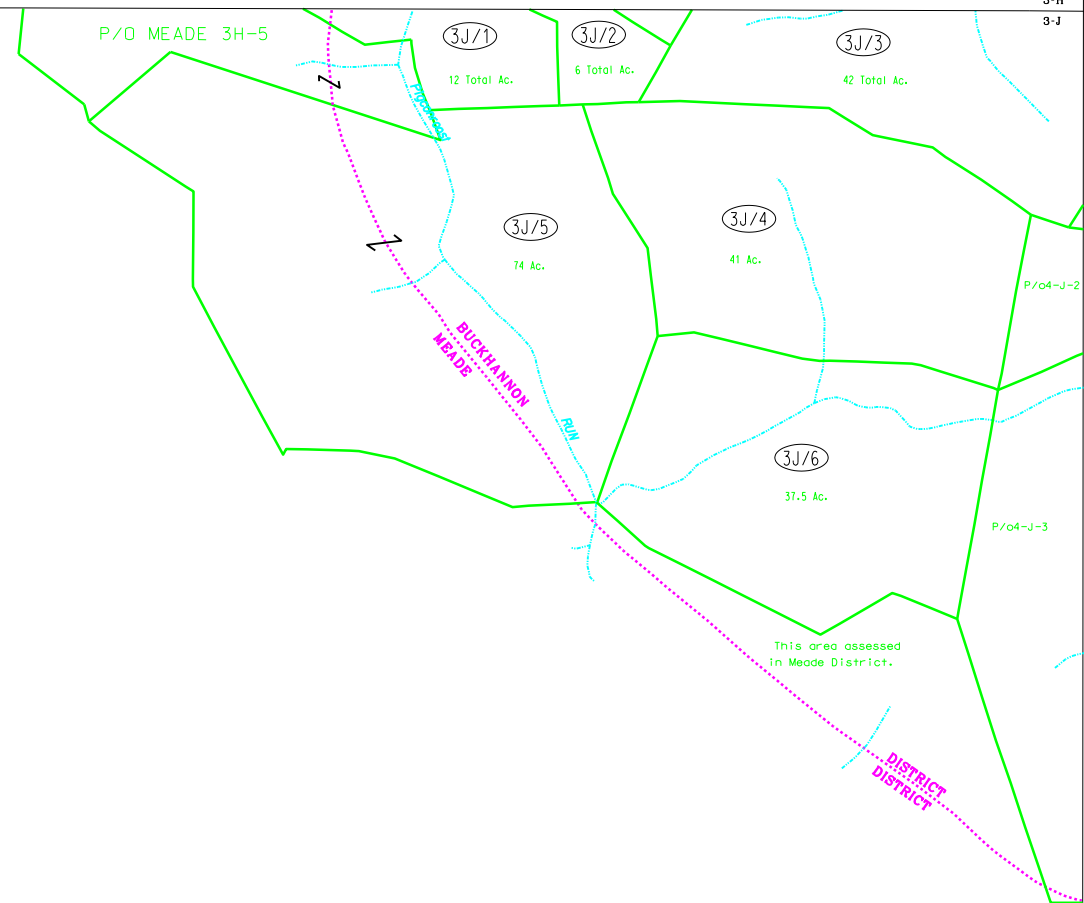


3-H  
3-J

3-H  
3-J  
4-H  
4-J



3-J

3-J  
4-J  
4-K



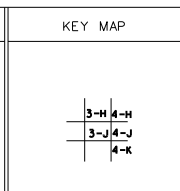
For Tax Purposes Only  
 Prepared by  
 Upshur County Assessor Office  
 Dustin Zickefoose : Assessor  
 Hugh P McGee, Jr. : Mapper

LEGEND	
Property line	—————
Edge of pavement or roadway	- - - - -
Corporation line	- - - - -
District line	- - - - -
County line	—————
Original lot line	- - - - -
Deed lot number	(15)
Parcel or index number	Ⓣ
Improvement	o
Railroad	—+—+—+—

REVISIONS
1
2
3
4
5
6
7
8

RESTRICTION

All tax maps created under the provisions of reappraisal legislation are the property of Upshur County West Virginia and the reproduction, copying, distribution or sale of such tax maps or any copies thereof without the written permission of the Upshur County Assessor is prohibited by law.



UPSHUR COUNTY  
 STATE OF WEST VIRGINIA  
 Office of Assessor

DISTRICT  
 BUCKHANNON  
 SHEET NO:3-J  
 Date, Aerial Photography: 4-24-62  
 Photo No: UP-3-149  
 Date, Map: 7-16-64  
 Scale: 1" = 400'