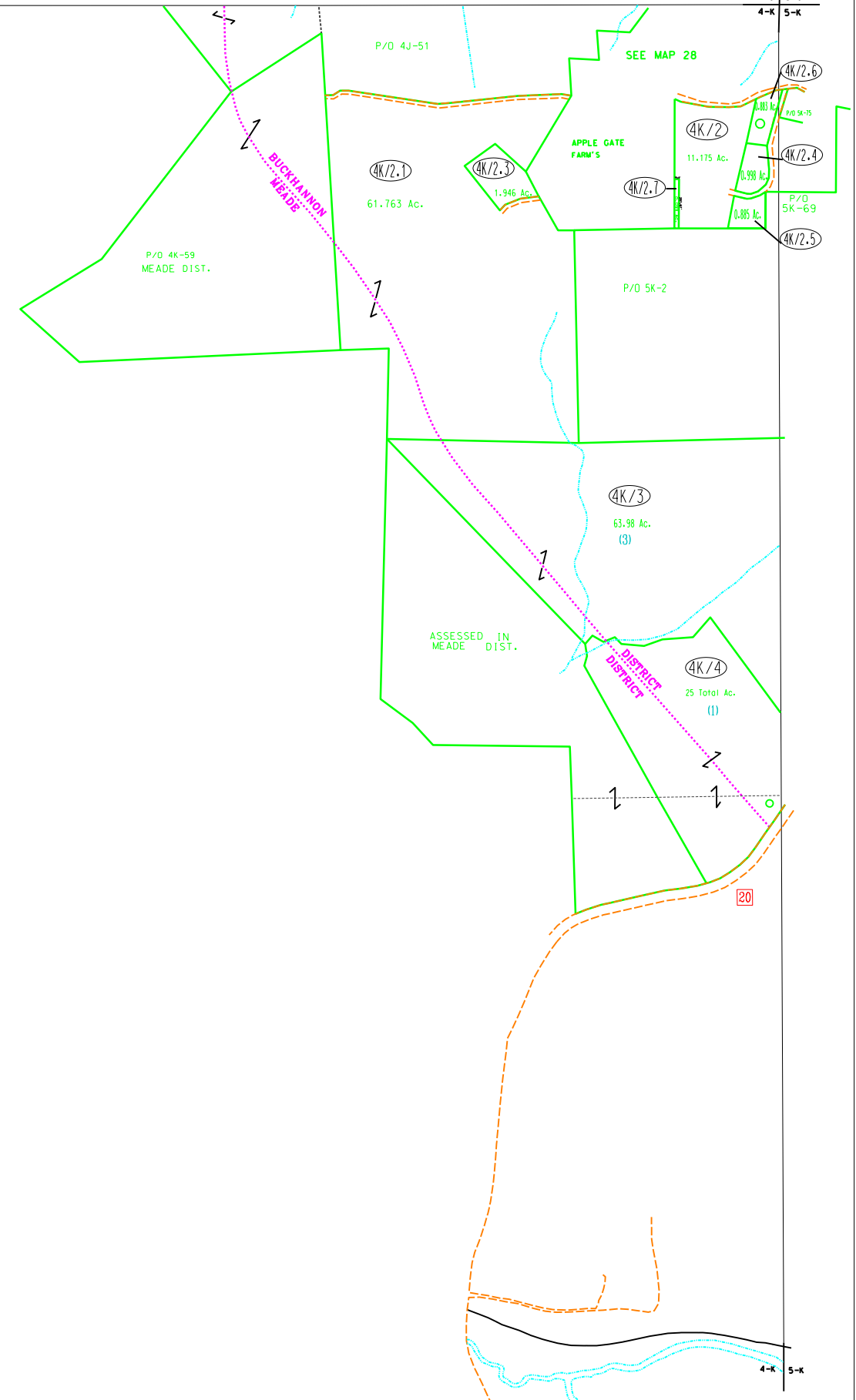


4-J
4-K

4-J
4-K

5-J
5-K



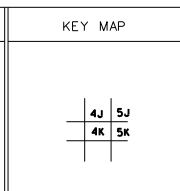
For Tax Purposes Only
 Prepared by
 Upshur County Assessor Office
 Dustin Zickefoose : Assessor
 Hugh P McGee, Jr. : Mapper

LEGEND	
Property line	—————
Edge of pavement or roadway	- - - - -
Corporation line	- · - · -
District line	- · - · -
County line	- · - · -
Original lot line	- · - · -
Deed lot number	(15)
Parcel or index number	Ⓣ
Improvement	○
Railroad	—+—+—+—

REVISIONS		
1	9/13/2010	HPM
2	6/2/2011	HPM
3	2/11/2013	HPM
4	4/19/2013	HPM
5	5/15/2013	HPM
6	7/17/2013	HPM
7	2-27-2015	HPM
8	6-19-2015	HPM

RESTRICTION

All tax maps created under the provisions of reappraisal legislation are the property of Upshur County West Virginia and the reproduction, copying, distribution or sale of such tax maps or any copies thereof without the written permission of the Upshur County Assessor is prohibited by law.



UPSHUR COUNTY
 STATE OF WEST VIRGINIA
 Office of Assessor

DISTRICT
BUCKHANNON

SHEET NO: 4-K

Date, Aerial Photography: 4-24-62
 Photo No: up-5-77

Date, Map: 12-6-62
 Scale: 1" = 400'