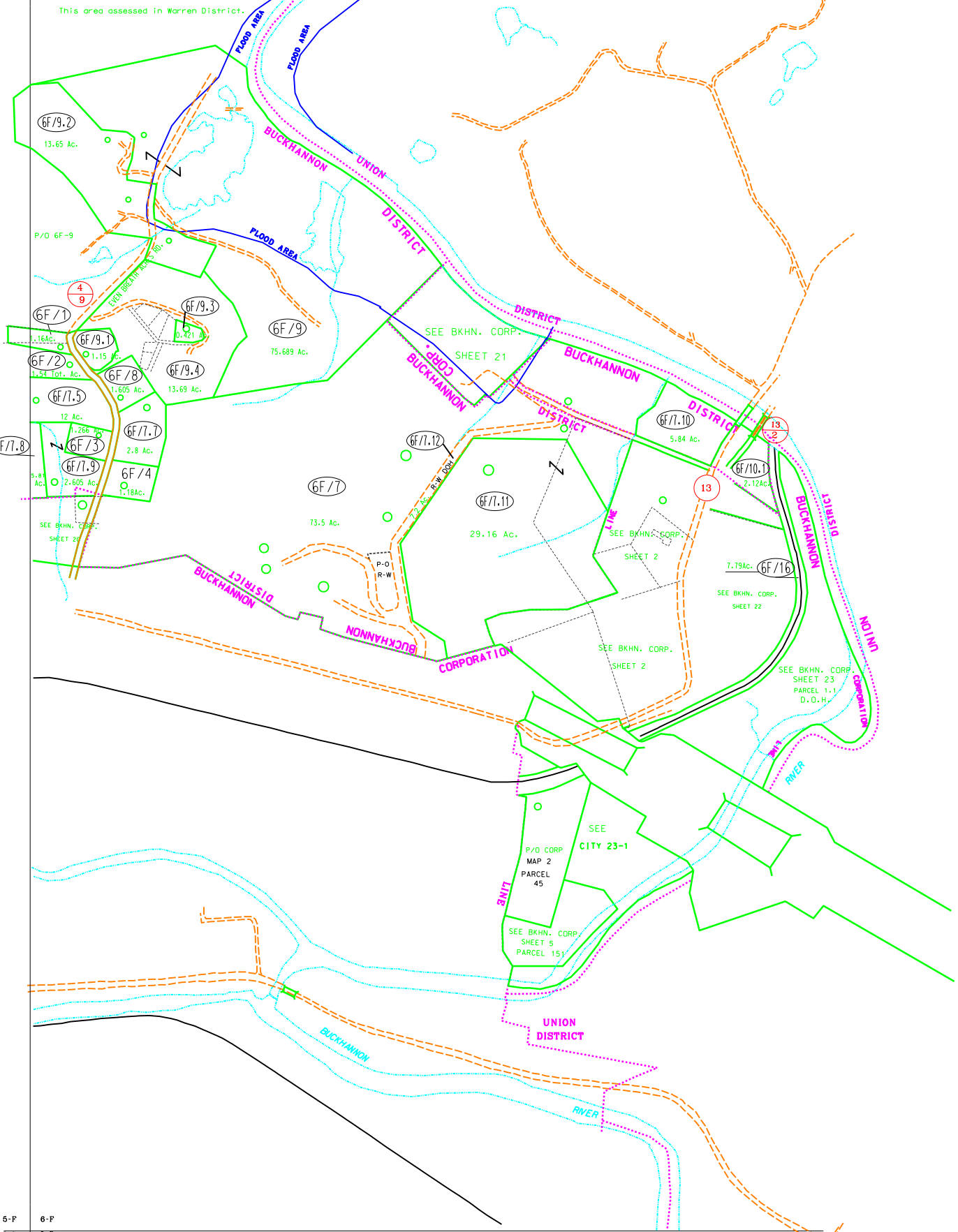


5-E 6-B
5-F 6-F



5-F 6-F
5-G 6-G



For Tax Purposes Only
Prepared by
Upshur County Assessor Office
Dustin Zickefoose : Assessor
Hugh P McGee, Jr. : Mapper

LEGEND	
Property line	Original lot line
Edge of pavement or roadway	Deed lot number (15)
Corporation line	Parcel or index number (99)
District line	Improvement
County line	Railroad

REVISIONS	
1	9/28/2005 HPM
2	5/28/2006 HPM
3	4/20/2007 HPM
4	8/1/2007 HPM
5	8/4/2008 HPM
6	3/5/2009 HPM
7	9/13/2009 HPM
8	1/11/2012 HPM

RESTRICTION

All tax maps created under the provisions of reappraisal legislation are the property of Upshur County West Virginia and the reproduction, copying, distribution or sale of such tax maps or any copies thereof without the written permission of the Upshur County Assessor is prohibited by law.

KEY MAP	
SE	6E
SF	6F
SG	6G

UPSHUR COUNTY
STATE OF WEST VIRGINIA
Office of Assessor

DISTRICT
BUCKHANNON
SHEET NO: 6-F
Date, Aerial Photography: 4-24-62
Photo No: UP-3-32
Date, Map: 11-20-62
Scale: 1"=400'