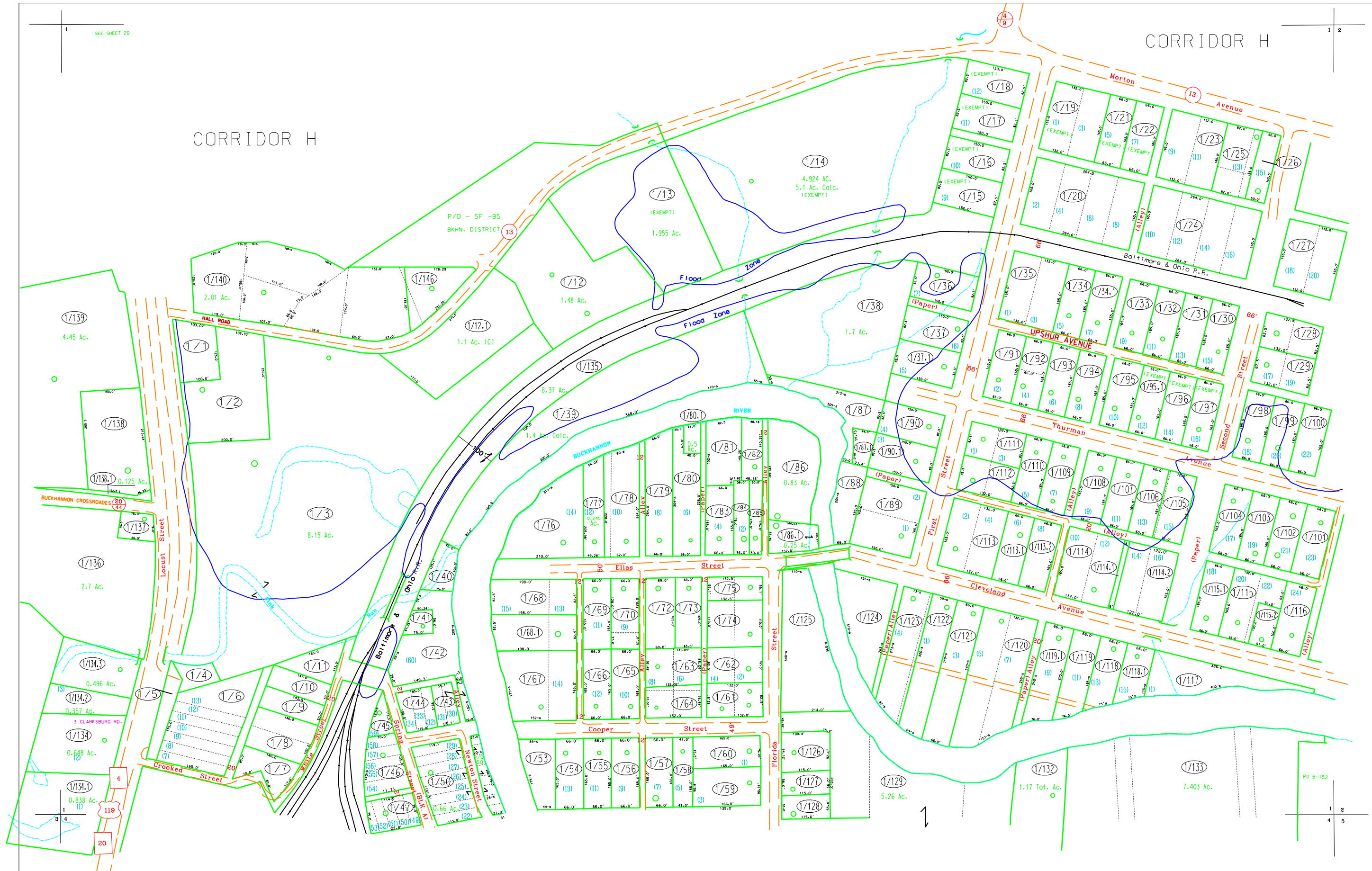


CORRIDOR H



For Tax Purposes Only

Prepared by

Upshur County Assessor Office
 Dustin Zickefoose : Assessor
 Hugh P McGee, Jr. : Mapper

LEGEND

Property line	-----	Original line	-----
Edge of pavement or roadway	-----	Deed lot number	(15)
Corporation line	-----	Parcel or index number	(99)
District line	-----	Improvement	o
County line	-----	Railroad	-----

REVISIONS

1	08-01-2000	DWR
2	10-01-2000	DWR
3	09-16-2002	DWR
4	10-15-2004	HPM
5	9-13-2006	HPM
6	5-22-2008	HPM
7	1-25-2009	HPM
8	1-15-2015	HPM

RESTRICTION

All tax maps created under the provisions of reappraisal legislation are the property of Upshur County West Virginia and the reproduction, copying, distribution or sale of such tax maps or any copies thereof without the written permission of the Upshur County Assessor is prohibited by law.

KEY MAP

16	20	6F
16	1	2
3	4	5

UPSHUR COUNTY

STATE OF WEST VIRGINIA

Office of Assessor

DISTRICT

CITY OF BUCKHANNON

SHEET NO: 1

Date, Aerial Photography: 3-28-62
 Photo No: 1-87

Date, Map: 1-13-64
 Scale: 1" = 100'