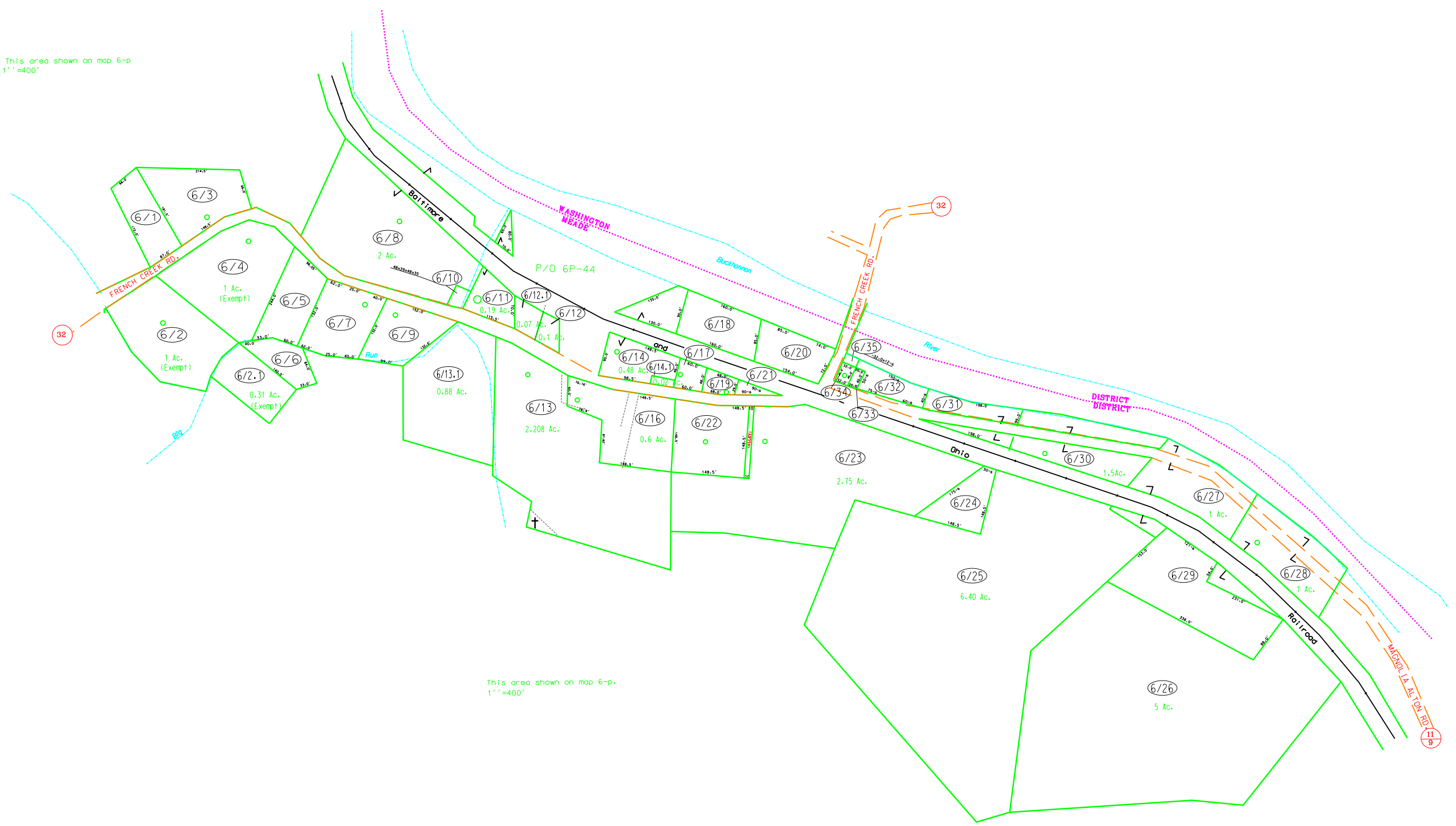


This area shown on map 6-p
1"=400'



This area shown on map 6-p.
1"=400'



For Tax Purposes Only

Prepared by

Upshur County Assessor Office
Dustin Zickefoose : Assessor
Hugh P McGee, Jr. : Mapper

LEGEND

Property line	—————	Original lot line	-----
Edge of pavement or roadway	-----	Deed lot number	(15)
Corporation line	-----	Parcel or index number	99
District line	-----	Improvement	o
County line	-----	Railroad	+

REVISIONS

1	6-29-2005	HPM
2	9/28/2005	HPM
3	5/28/2006	HPM
4	6/18/2006	HPM
5	3/17/2009	HPM
6	1/30/2012	HPM
7		
8		

RESTRICTION

All tax maps created under the provisions of reappraisal legislation are the property of Upshur County West Virginia and the reproduction, copying, distribution or sale of such tax maps or any copies thereof without the written permission of the Upshur County Assessor is prohibited by law.

KEY MAP



UPSHUR COUNTY
STATE OF WEST VIRGINIA
Office of Assessor

DISTRICT MEADE
ALTON
SHEET NO: 6

Date, Aerial Photography: April 5, 1962
Photo No: UP-3-40

Date, Map: 8/19/64
Scale: 1" = 100'