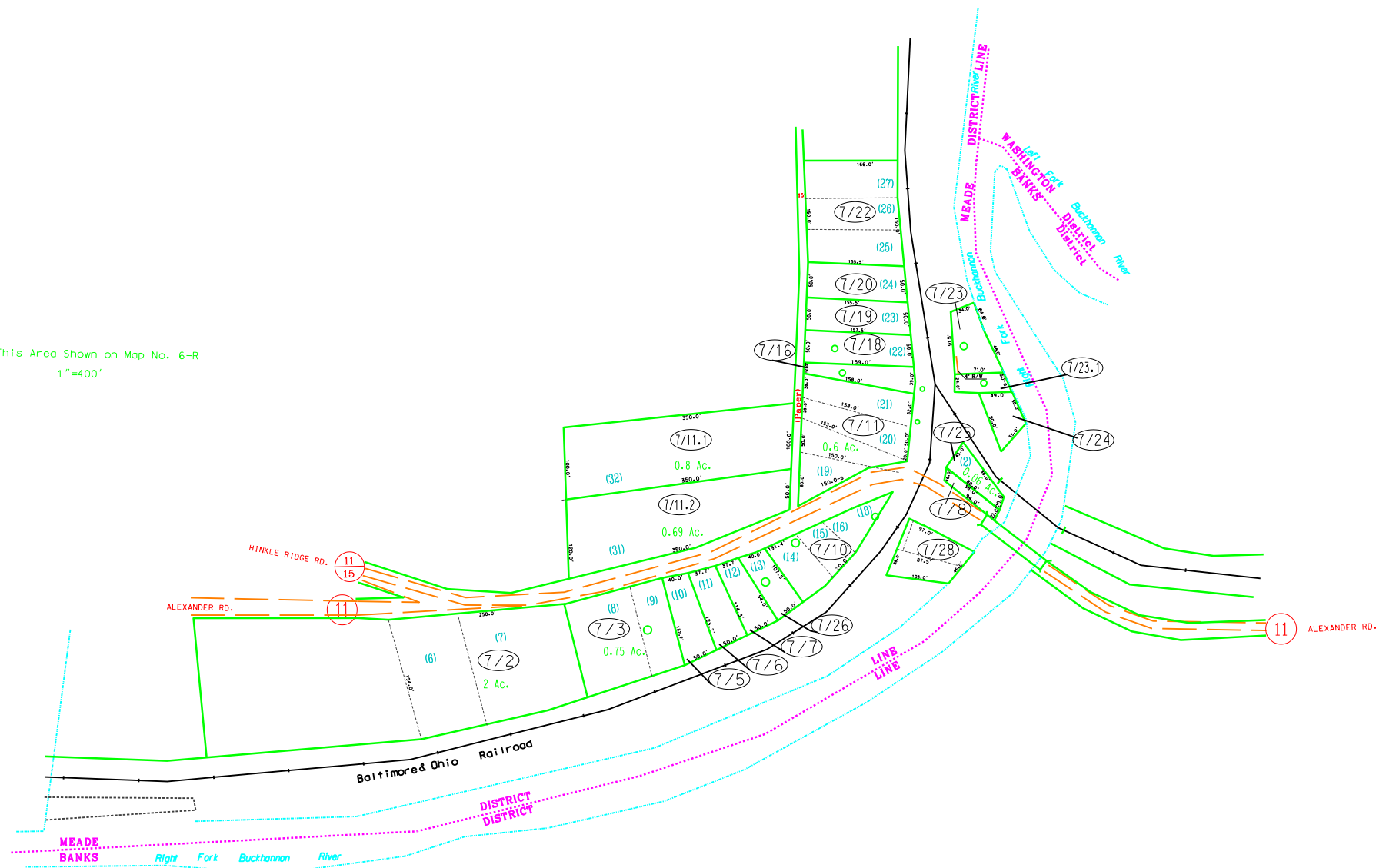


This Area Shown on Map No. 6-R  
1"=400'



For Tax Purposes Only

Prepared by

Upshur County Assessor Office  
Dustin Zickefoose : Assessor  
Hugh P McGee, Jr. : Mapper

LEGEND

Property line	—————	Original lot line	-----
Edge of pavement or roadway	-----	Deed lot number	(15)
Corporation line	-----	Parcel or index number	99
District line	-----	Improvement	○
County line	-----	Railroad	—+—+—+—

REVISIONS

1	03-05-98	DWR
2	8/4/2008	HPM
3	3/17/2009	HPM
4	5/2/2011	HPM
5	4/18/2013	HPM
6	5/16/2013	HPM
7	5-9-2014	HPM
8	6-30-2014	HPM

RESTRICTION

All tax maps created under the provisions of reappraisal legislation are the property of Upshur County West Virginia and the reproduction, copying, distribution or sale of such tax maps or any copies thereof without the written permission of the Upshur County Assessor is prohibited by law.

KEY MAP

5R	6R	6R
5R	7	6R
5R	6R	6R

UPSHUR COUNTY  
STATE OF WEST VIRGINIA  
Office of Assessor

DISTRICT MEADE  
ALEXANDER

SHEET NO: 7

Date, Aerial Photography: 4-25-62  
Photo No: UP-3-50

Date, Map: 8-31-64  
Scale: 1" = 100'