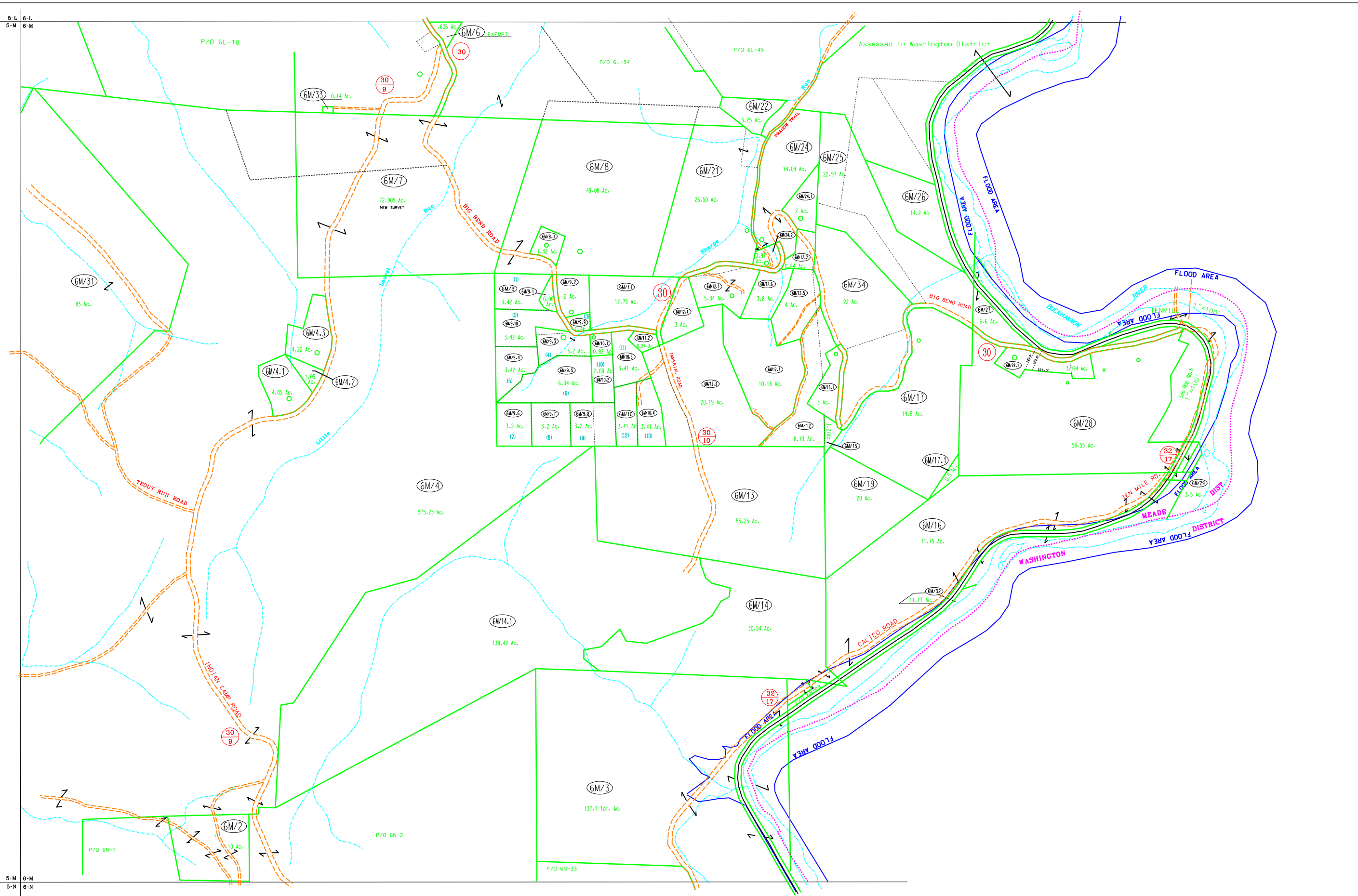


5-L 6-L
5-M 6-M

5-M 6-M
5-N 6-N



For Tax Purposes Only
Prepared by
Upshur County Assessor Office
Dustin Zickefoose : Assessor
Hugh P McGee, Jr. : Mapper

LEGEND	
Property line	Original lot line
Edge of pavement or roadway	Deed lot number (15)
Corporation line	Parcel or index number (99)
District line	Improvement (o)
County line	Railroad

REVISIONS	
1	5/14/2006 HPM
2	5/28/2006 HPM
3	6/18/2006 HPM
4	8/4/2008 HPM
5	10/16/2008 HPM
6	9/27/2011 HPM
7	10/17/2012 HPM
8	3-31-2015 HPM

RESTRICTION
All tax maps created under the provisions of reappraisal legislation are the property of Upshur County West Virginia and the reproduction, copying, distribution or sale of such tax maps or any copies thereof without the written permission of the Upshur County Assessor is prohibited by law.

KEY MAP	
5L	6L
5M	6M
5N	6N

UPSHUR COUNTY
STATE OF WEST VIRGINIA
Office of Assessor

DISTRICT
MEADE
SHEET NO: 6-M
Date, Aerial Photography: 4-24-62
Photo No: UP-3-53
Date, Map: 12-4-62
Scale: 1" = 400'