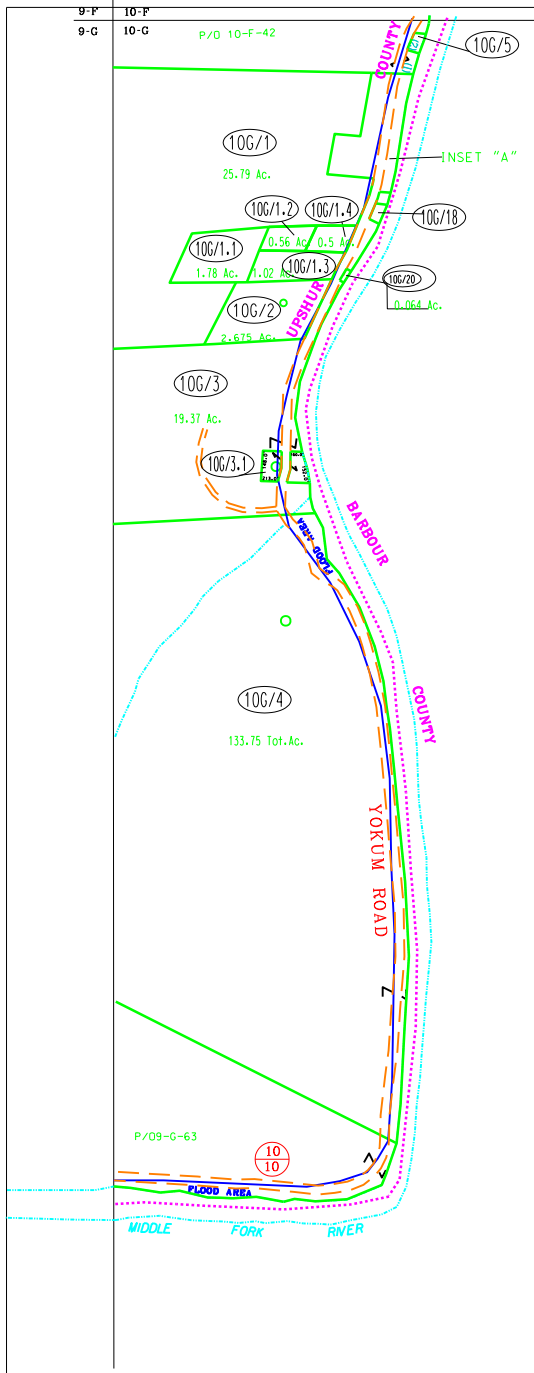


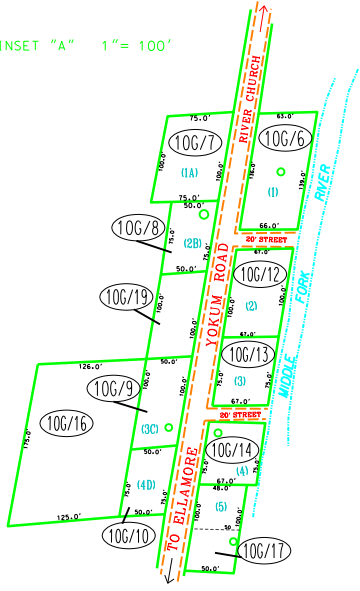
9-F 10-F  
9-G 10-G

P/O 10-F-42

PARCEL INDEX	
10G/5	1005x101x62
10G/18	45' x 90' x 37' x 14'



INSET "A" 1" = 100'



THIS AREA SHOWN ON MAP 10G

**For Tax Purposes Only**  
Prepared by  
Upshur County Assessor Office  
Dustin Zickefoose : Assessor  
Hugh P McGee, Jr. : Mapper

LEGEND	
Property line	-----
Edge of pavement or roadway	-----
Corporation line	-----
District line	-----
County line	-----
Original lot line	----- (15)
Deed lot number	○ (15)
Parcel or index number	○ (15)
Improvement	○ (15)
Railroad	-----

REVISIONS	
1	12-11-1998 DWR
2	09-18-2003 DWR
3	10/14/2005 HPM
4	8/2/2011 HPM
5	
6	
7	
8	

**RESTRICTION**  
All tax maps created under the provisions of reappraisal legislation are the property of Upshur County West Virginia and the reproduction, copying, distribution or sale of such tax maps or any copies thereof without the written permission of the Upshur County Assessor is prohibited by law.

KEY MAP	
9F	10F
9G	10G
9H	

**UPSHUR COUNTY**  
STATE OF WEST VIRGINIA  
Office of Assessor

DISTRICT **UNION**  
SHEET NO: 10-G  
Date, Aerial Photography: 4-24-62  
Photo No: UP-3-69  
Date, Map: 11-8-62  
Scale: 1" = 400'