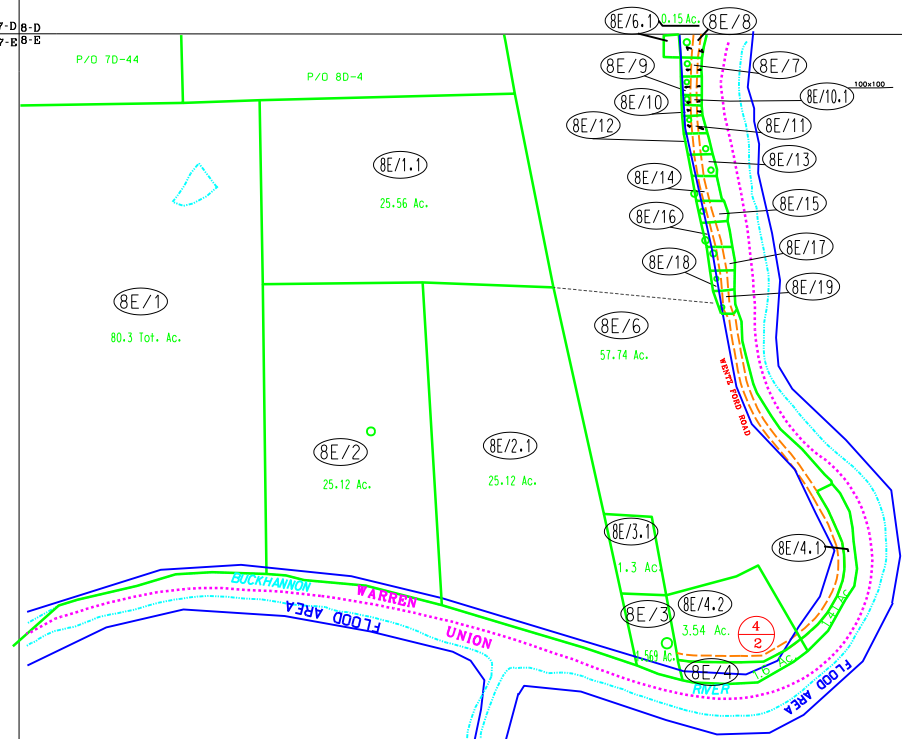


7-D 8-D  
7-E 8-E



PARCEL INDEX	
BE/7	100.0x100.0
BE/8	100.0x100.0
BE/9	100.0x100.0
BE/10	100.0x100.0
BE/11	100.0x100.0
BE/12	100.0x100.0
BE/13	104.0x100.0
BE/14	100.0x100.0
BE/15	100.0x100.0
BE/16	100.0x100.0
BE/17	100.0x92.0x100.0x100.0
BE/18	100.0x100.0
BE/19	100.0x100.0



For Tax Purposes Only  
Prepared by  
Upshur County Assessor Office  
Dustin Zickefoose : Assessor  
Hugh P McGee, Jr. : Mapper

LEGEND

Property line	—————	Original lot line	- - - - -
Edge of pavement or roadway	— · — · —	Deed lot number	(15)
Corporation line	— · — · —	Parcel or index number	99
District line	— · — · —	Improvement	o
County line	— · — · —	Railroad	—+—+—

REVISIONS

1	12-11-98	DWR
2	10-07-2002	DWR
3	5/14/2006	HPM
4	4/20/2007	HPM
5	8/4/2008	HPM
6	11/26/2008	HPM
7	2/16/2011	HPM
8		

RESTRICTION

All tax maps created under the provisions of reappraisal legislation are the property of Upshur County West Virginia and the reproduction, copying, distribution or sale of such tax maps or any copies thereof without the written permission of the Upshur County Assessor is prohibited by law.

KEY MAP



UPSHUR COUNTY  
STATE OF WEST VIRGINIA  
Office of Assessor

DISTRICT

WARREN

SHEET NO: 8-E

Date, Aerial Photography: 4-25-62  
Photo No: UP-3-78

Date, Map: 11-13-62  
Scale: 1" = 400'