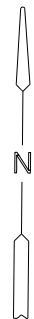
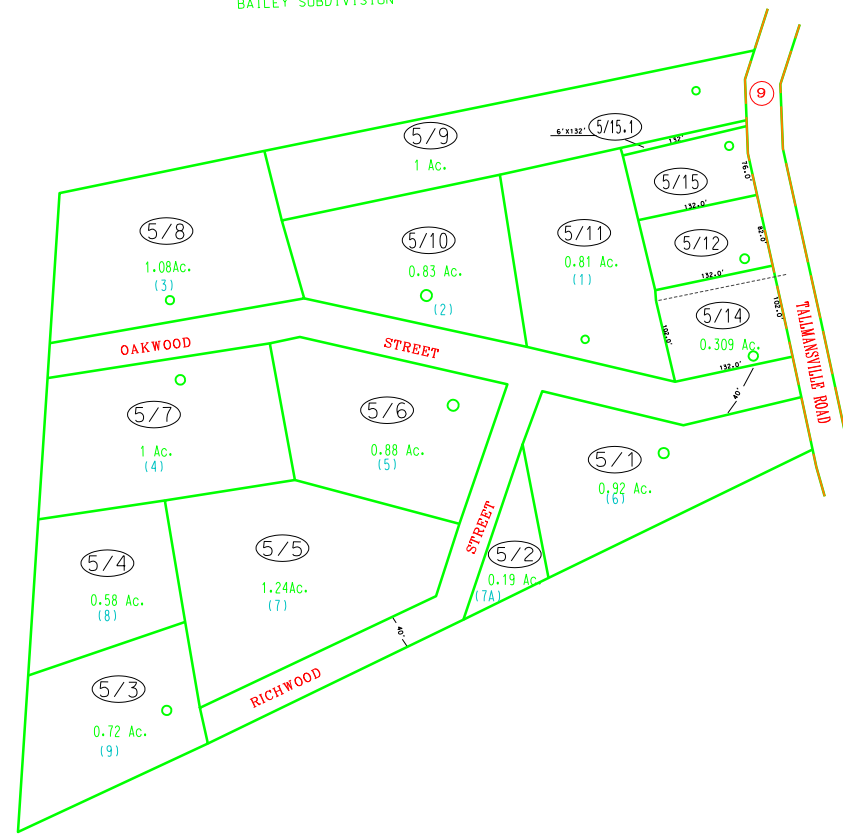


SEE MAP 6H  
BAILEY SUBDIVISION



For Tax Purposes Only

Prepared by  
Upshur County Assessor Office  
Dustin Zickefoose : Assessor  
Hugh P McGee, Jr. : Mapper

LEGEND

Property line	—————	Original lot line	- - - - -
Edge of pavement or roadway	— — — —	Deed lot number	(15)
Corporation line	— · — · —	Parcel or index number	(99)
District line	- - - - -	Improvement	○
County line	— · — · —	Railroad	— + — + —

REVISIONS

1	6/1/2007	HPM
2	9/13/2008	HPM
3		
4		
5		
6		
7		
8		

RESTRICTION

All tax maps created under the provisions of reappraisal legislation are the property of Upshur County West Virginia and the reproduction, copying distribution or sale of such tax maps or any copies thereof without the written permission of the Upshur County Assessor is prohibited by law.

KEY MAP

	13	
6H	5	6H
6H	6H	6H

UPSHUR COUNTY  
STATE OF WEST VIRGINIA  
Office of Assessor

DISTRICT

WASHINGTON

SHEET NO: 5

Date, Aerial Photography:  
Photo No:

Date, Map: 9-26-80  
Scale: 1" = 100'