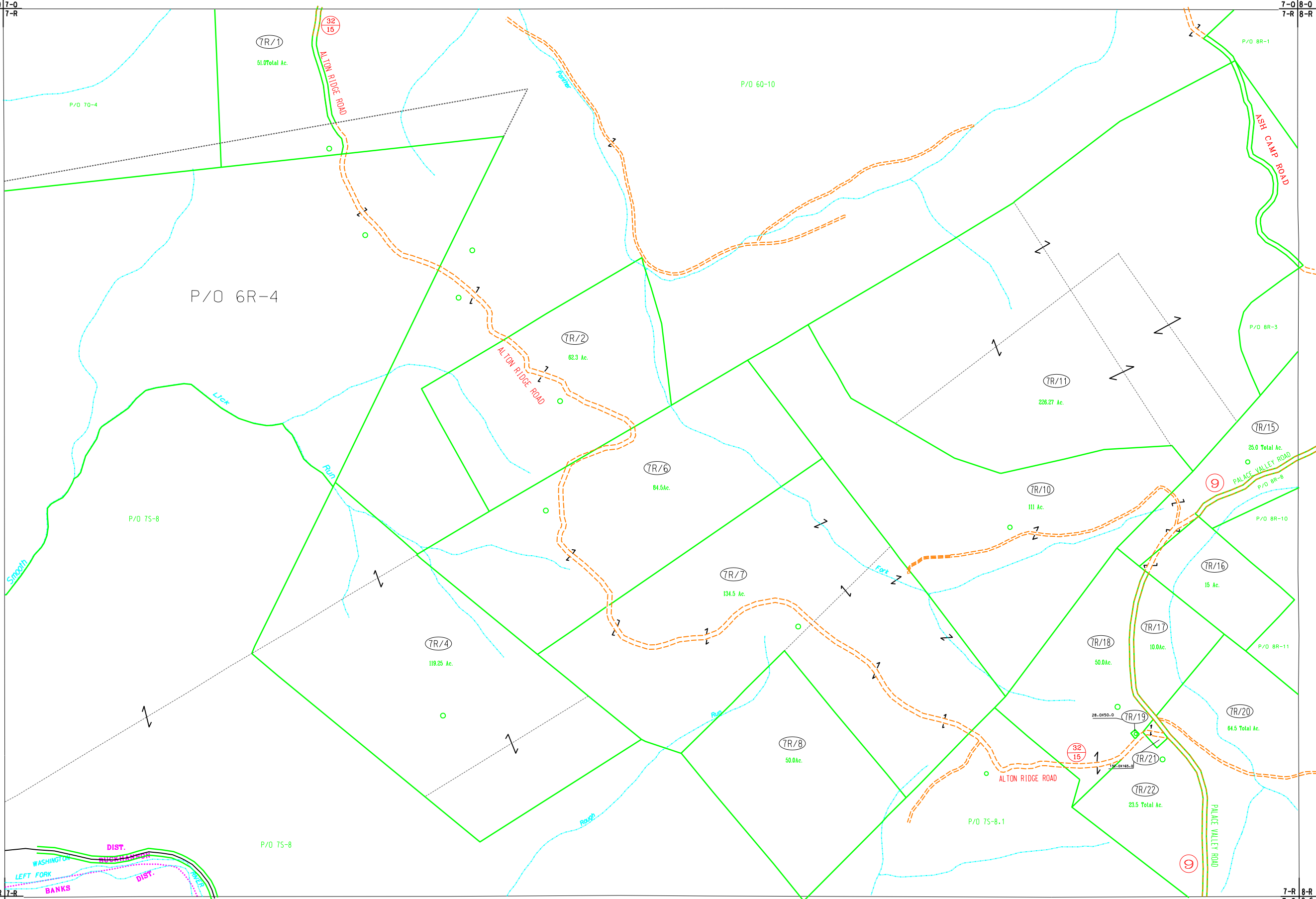


6-0 7-0  
6-R 7-R

7-0 8-0  
7-R 8-R

6-R 7-R  
6-S 7-S

7-R 8-R  
7-S 8-S



For Tax Purposes Only  
 Prepared by  
 Upshur County Assessor Office  
 Dustin Zickelose : Assessor  
 Hugh P. McGee, Jr. : Mapper

LEGEND	
Property line	—————
Edge of pavement or roadway	———
Corporation line	-----
District line	-----
County line	-----
Original line	-----
Deed lot number	(15)
Parcel or index number	⊙
Improvement	○
Railroad	—+—+—+—

REVISIONS		
1	11-08-2002	DWR
2	12/07/2011	HPM
3	11-4-2013	HPM
4	3-31-2015	HPM
5		
6		
7		
8		

**RESTRICTION**

All tax maps created under the provisions of reappraisal legislation are the property of Upshur County West Virginia and the reproduction, copying, distribution or sale of such tax maps or any copies thereof without the written permission of the Upshur County Assessor is prohibited by law.

KEY MAP	
60 70 80	6R 7R 8R
65 75 85	

**UPSHUR COUNTY**  
 STATE OF WEST VIRGINIA  
 Office of Assessor

**DISTRICT WASHINGTON**  
 SHEET NO: 7-R  
 Date, Aerial Photography: 4-25-62  
 Photo No: UP-3-50  
 Date, Map: 12-3-62  
 Scale: 1" = 400'