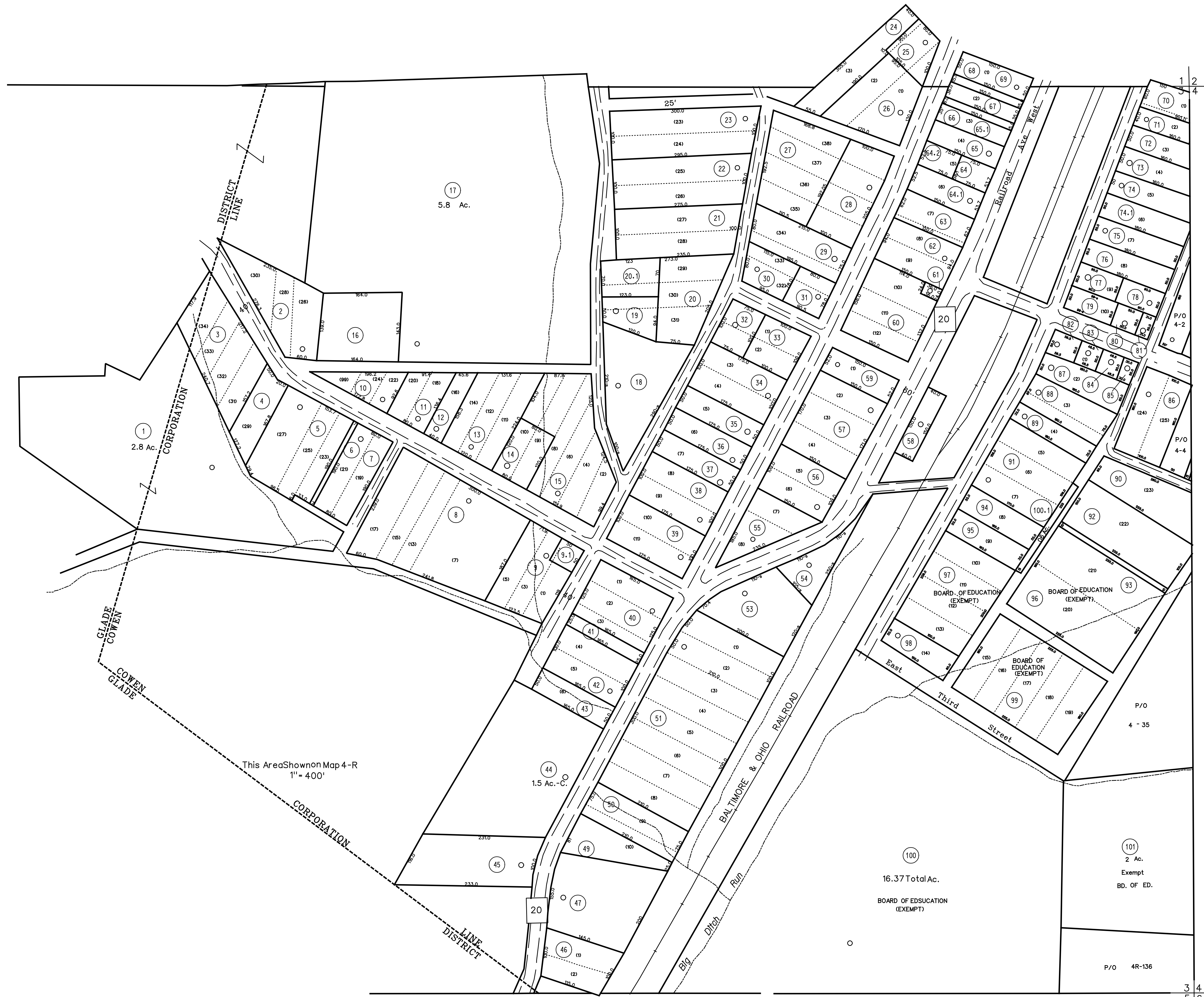


This Area Shown on Map GD-10  
1" = 100'

This Area Shown on Map 4-R  
1" = 400'



For Tax Purposes Only

Prepared by  
Max Cochran - Assessor  
2 Court Square  
Webster Springs, WV 26288

LEGEND	
Property line	———
Edge of pavement or roadway	- - - - -
Corporation line	- - - - -
District line	- - - - -
County line	- - - - -
Original lot line	- - - - - (15)
Deed lot number	(15)
Parcel or index number	(99)
Improvement	o
Railroad	o

REVISIONS	
1	
2	
3	
4	
5	
6	
7	
8	

RESTRICTION

All tax maps created under the provisions of reappraisal legislation are the property of Webster County West Virginia and the reproduction, copying, distribution or sale of such tax maps or any copies thereof without the written permission of the Webster County Assessor is prohibited by law.

KEY MAP	
1	2
3	4
5	

GD-10

WEBSTER COUNTY  
STATE OF WEST VIRGINIA  
Office of Assessor

DISTRICT	
TOWN OF COWEN	
SHEET NO: 3	
Date, Aerial Photography: Photo No:	Date, Map: Scale: 1" = 100'