

FOR TAX PURPOSES ONLY

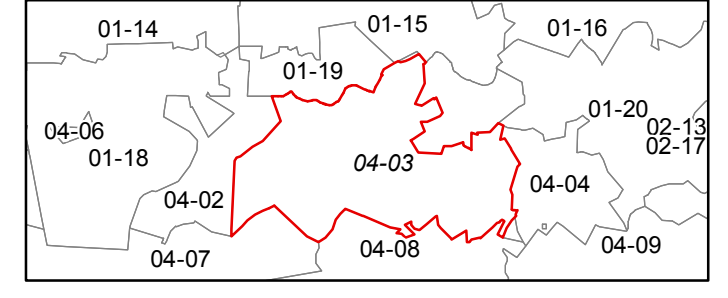
For copies contact Wetzel County Assessors Office at 304-455-8216. Any unauthorized reproduction will be subject to the penalties outlined in West Virginia Code.

**Legend**

Property Line	Original Lot Line
Road Right of Way	Lot Number (15)
Corporation Line	Parcel Number (99)
District Line	Water
County Line	Railroad

R	11 Revised 7/1/85	9 Revised 7/15/99	17
e	2 Revised 7/1/81	10 Revised 6/29/10	18
v	3 Revised 7/1/84	11 Revised 10/5/2011	19
i	4 Revised 7/1/87	12 Revised 3/2/2015	20
s	5 Revised 7/1/91	13 Revised 12/30/2016	21
j	6 Revised 12/1/96	14	22
l	7 Revised 6/1/05	15	23
n	8 Revised 10/1/07	16	24

**STATE OF WEST VIRGINIA**  
**COUNTY OF WETZEL**  
 Office of Assessor



GRANT DISTRICT  
 SHEET 03  
 Date, Aerial Photography: 2013  
 Date, Map: 1/27/2017  
 Scale: 1" = 400'