

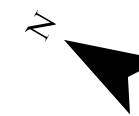
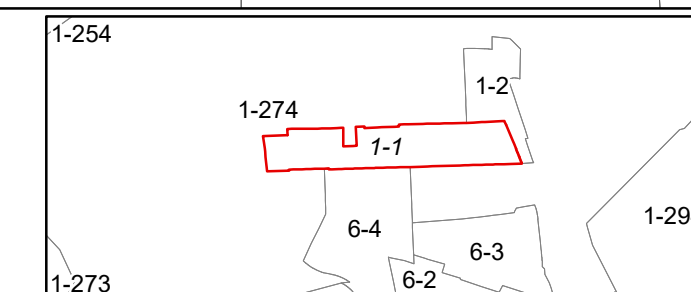
FOR TAX PURPOSES ONLY  
Prepared by Hardy County, WV

**Legend**

Property Line	Original Lot Line
Road Right of Way	Lot Number (15)
Corporation Line	Parcel Number (99)
District Line	Water
County Line	Railroad

R	1	Revised 7/8/2014	9	17
E	2		10	18
V	3		11	19
I	4		12	20
S	5		13	21
I	6		14	22
O	7		15	23
N	8		16	24

**STATE OF WEST VIRGINIA**  
**COUNTY OF HARDY**  
Office of Assessor



**CAPON SHEET 1**  
Date, Aerial Photography: 2003  
Date, Map: 1/20/2025  
Scale: 1" = 100'