

FOR TAX PURPOSES ONLY

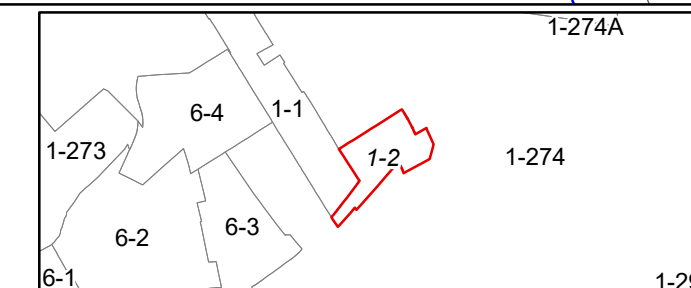
Prepared by Hardy County, WV

Legend

Property Line	—	Original Lot Line	- - - - -
Road Right of Way	—	Lot Number (15)	(15)
Corporation Line	—	Parcel Number (99)	(99)
District Line	—	Water	—
County Line	—	Railroad	—

R	11	Revised 7/8/2014	9		17
O	2		10		18
V	3		11		19
I	4		12		20
S	5		13		21
I	6		14		22
O	7		15		23
N	8		16		24

STATE OF WEST VIRGINIA
COUNTY OF HARDY
 Office of Assessor



CAPON
SHEET 2

Date, Aerial Photography: 2003
 Date, Map: 1/20/2025
 Scale: 1" = 100'