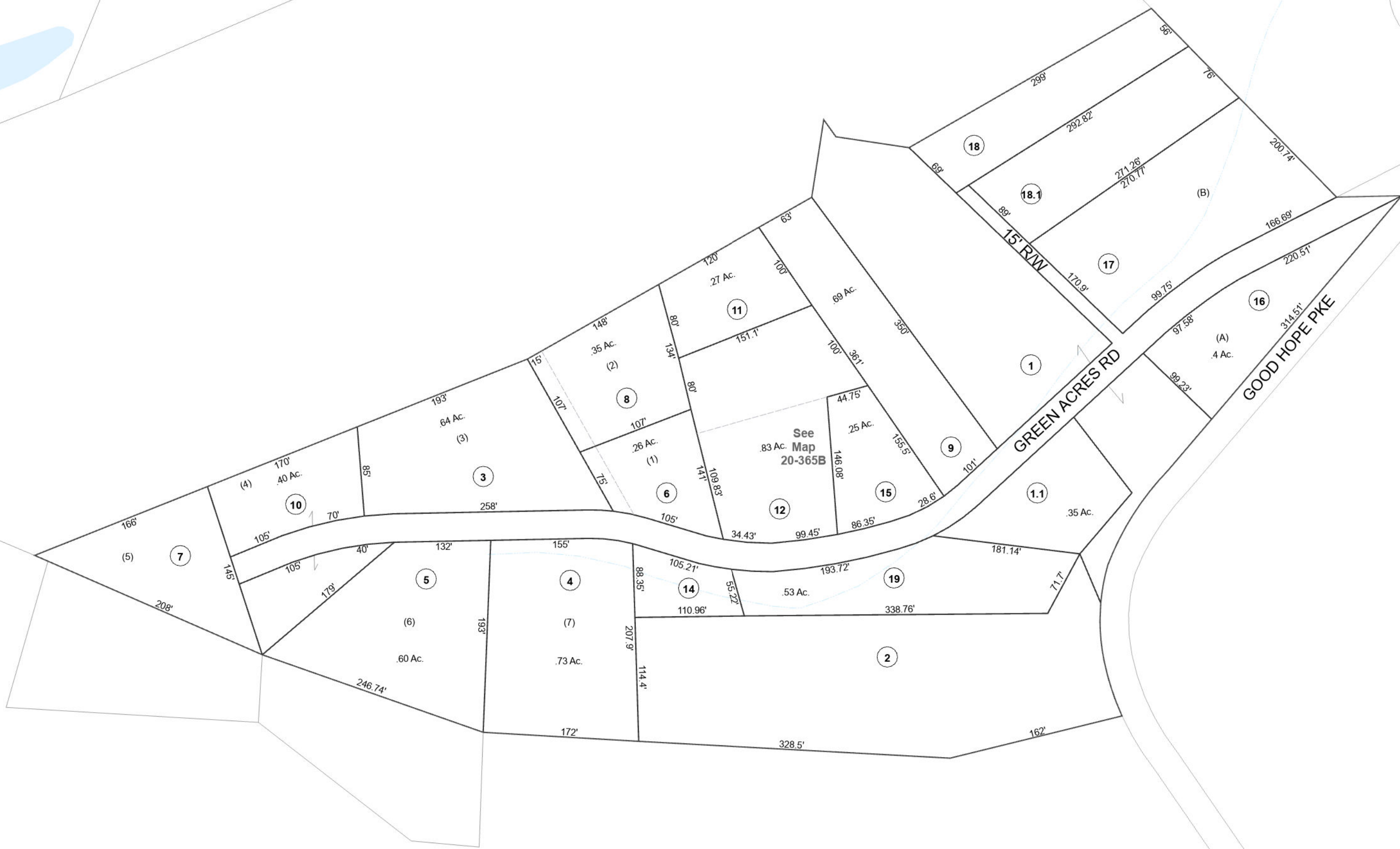


See Map
20-0365



STARK TOWER RD



FOR TAX PURPOSES ONLY

Prepared By:

Allen R. Ferree

Harrison County Assessor

Legend

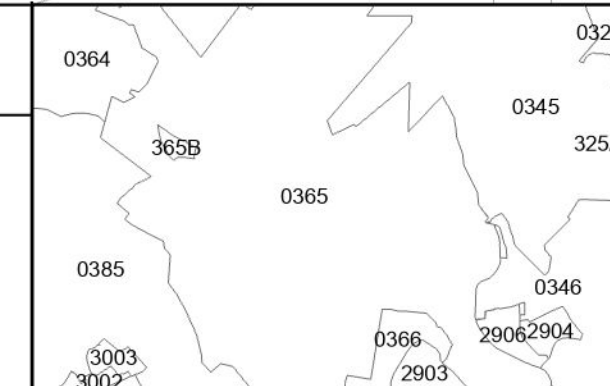
Property Line	—————
Edge of pavement or roadway	- - - - -
Corporation line
District line
County Line

Original Lot Line	—————
Deed lot number (in parenthesis)	(15)
Parcel or index number	15
Improvement	○
Railroad	—————
Water	—————

Restriction

Latest Revision
5/28/2013 2:46:33 PM

All tax maps created under the provisions of reappraisal legislation are the property of the Assessor of Harrison County, West Virginia and the reproduction, copying, modification, distribution or sale of such tax maps or any copies thereof without the written permission of the Harrison County Assessor is prohibited by law.



HARRISON COUNTY - WEST VIRGINIA
Office of Assessor

District: Union District
Map No: 20-365B
Date: January 1, 2025
Scale: 1:1,200

20-365B