

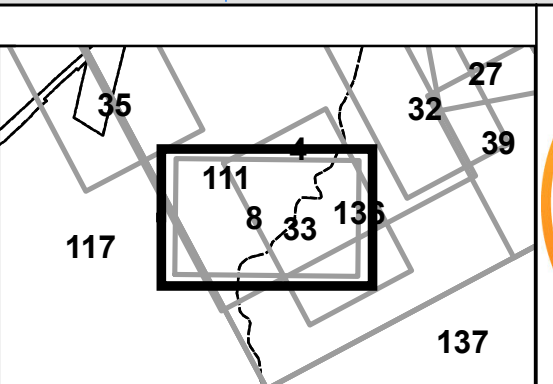
**FOR TAX PURPOSES ONLY**  
**LANDMARK**  
 geospatial

Legend	
	District Boundary
	Previous Deed
	Property
	Road Easement
	Railroad Right of Way
	Road Right of Way
	River
	Deed lot Number (15)
	Parcel or Index Number
	UNKNOWN
	Improvement
	Cemetery
	School
	Church

**Restriction**

All tax maps created under the provisions of reappraisal legislation are the property of the Assessor of Randolph County, West Virginia and the reproduction, copying, modification, distribution or sale of such tax maps or any copies thereof without the written permission of the Randolph County Assessor is prohibited by law.

Revisions					
1	R.E.B. 7-1-1988	10	A.K.B. 7-1-2005	19	28
2	OGIS 3-4-1991	11	A.K.B. 7-1-2006	20	29
3	OGIS T.L. 4-30-1992	12	A.K.B. 7-1-2007	21	30
4	OGIS J.E.B. 3-15-1994	13	S.T.P. 5-18-2017	22	31
5	OGIS J.E.B. 5-1-1996	14		23	32
6	SLS INC. J.W.M. 3-1997	15		24	33
7	P.K.Y. 7-1-1999	16		25	34
8	P.K.Y. 7-1-2000	17		26	35
9	P.K.Y. 7-1-2004	18		27	36



**RANDOLPH COUNTY BEVERLY**  
 Assessor's Office  
 Phyllis K. Yokum, Assessor  
 ELKINS, WV

District 02 Map No. 8  
 Date of Publication: 2/3/2025  
 Scale: 1"=100'