

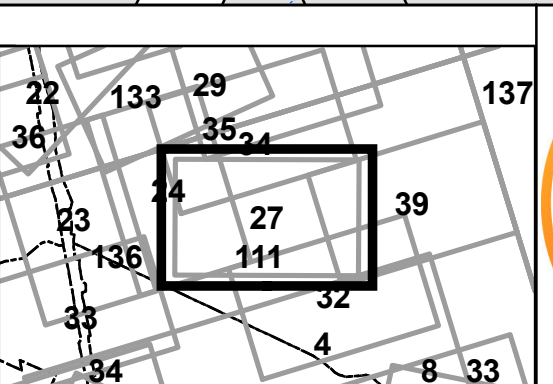
FOR TAX PURPOSES ONLY
LANDMARK
 geospatial

Legend	
	District Boundary
	Previous Deed
	Property
	Road Easement
	Railroad Right of Way
	Road Right of Way
	River
	Deed lot Number
	Parcel or Index Number
	UNKNOWN
	Improvement
	Cemetery
	School
	Church

Restriction

All tax maps created under the provisions of reappraisal legislation are the property of the Assessor of Randolph County, West Virginia and the reproduction, copying, modification, distribution or sale of such tax maps or any copies thereof without the written permission of the Randolph County Assessor is prohibited by law.

Revisions			
1	D.R. 7-1980	10	OGIS R.R.O. 3-1994
2	N.S. 4-1981	11	OGIS J.E.B. 4-20-1995
3	L.E.S. 7-1-1983	12	OGIS J.E.B. 5-1-1996
4	C.P. 7-1-1985	13	SLS INC. J.W.M. 4-1997
5	N.C.S. 7-1-1986	14	P.K.Y. 7-1-1998
6	D.F. 7-1-1988	15	P.K.Y. 7-1-1999
7	R.E.B. 7-1-1989	16	P.K.Y. 7-1-2000
8	OGIS J.E.B. 4-15-1992	17	P.K.Y. 7-1-2001
9	OGIS S.A.J. 5-3-1993	18	P.K.Y. 7-1-2002
19	P.K.Y. 7-1-2003	28	
20	A.K.B. 7-1-2005	29	
21	A.K.B. 7-1-2006	30	
22	A.K.B. 7-1-2008	31	
23	A.L.I. 7-1-2010	32	
24		33	
25		34	
26		35	
27		36	



RANDOLPH COUNTY LEADSVILLE
 Assessor's Office
 Phyllis K. Yokum, Assessor
 ELKINS, WV

District 10 Map No. 27
 Date of Publication: 2/3/2025
 Scale: 1"=100'