

Flood Hazard Risk



Rainelle, June 2016

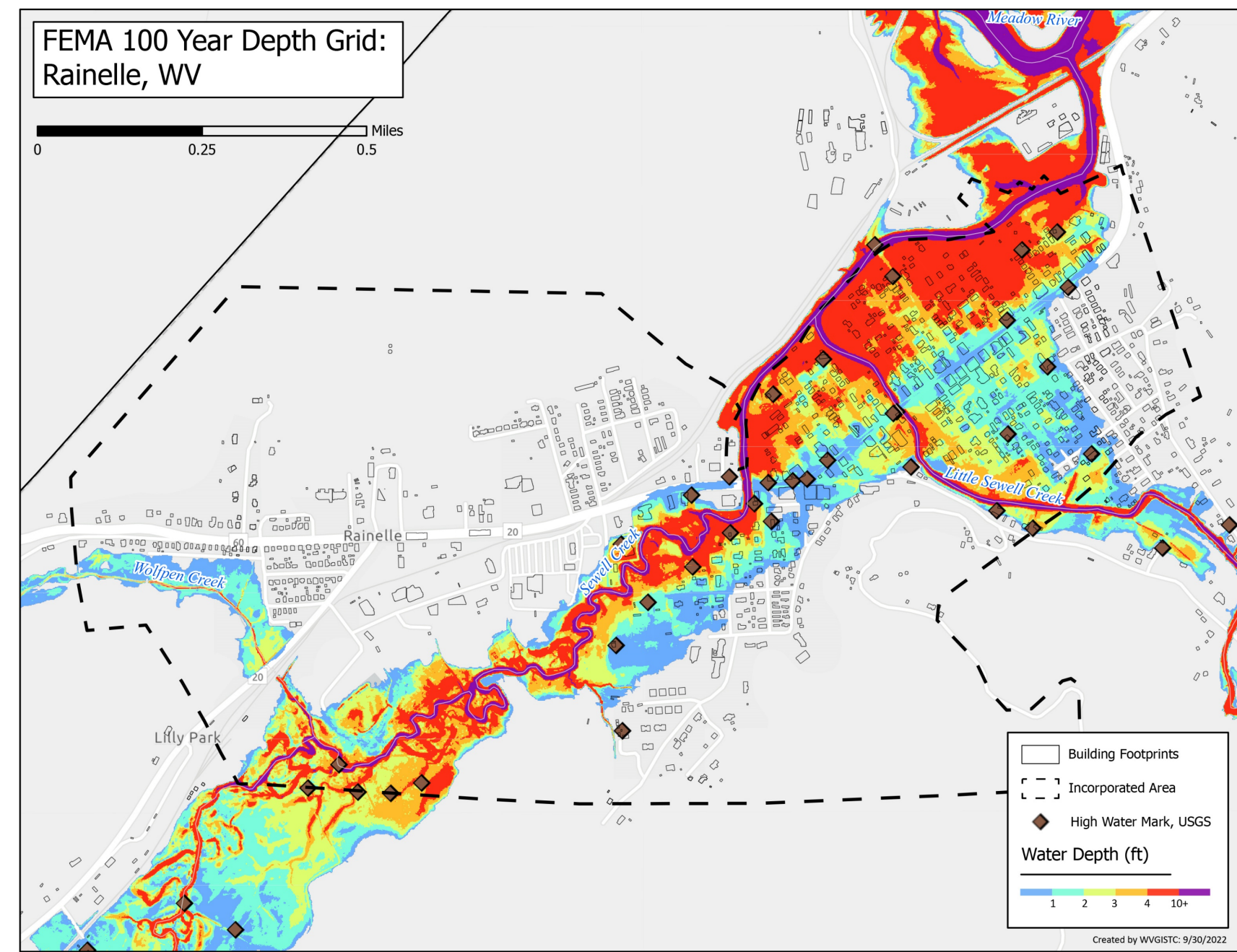
Flood Hazard Indicators	White Sulphur Springs	Rainelle	Clendenin	Richwood	Marlinton	Camden-on-Gauley	Statewide Median/Ratio
Regulatory Floodplain Area (Modified aSFHA)	267	223	235	247	494	35	74
Regulatory Floodplain Area Ratio	22.0%	31.2%	24.1%	23.1%	31.5%	16.4%	13.8%
Federally-Declared Flood Disasters (in County) since 1953	9	9	8	5	6	4	5
Maximum Estimated Flood Depth	5	6	28	8	9	13	2

Among the Top 20% Incorporated Communities



Clendenin, June 2016

Richwood, June 2016



Structure Risk

Building Counts / Ratios	White Sulphur Springs	Rainelle	Clendenin	Richwood	Marlinton	Camden-on-Gauley	Statewide Ratio
Structures in Regulatory Floodplain (SFHA) Ratio in All Bldgs. in community	303 18.6%	336 33.7%	302 47.0%	261 20.8%	357 54.8%	21 30.0%	8.2%
Structures in All High-Risk Floodplains Ratio in All Bldgs. in community	303 18.7%	336 33.7%	302 47.0%	288 22.9%	400 61.4%	21 30.0%	9.6%
Buildings in High-Risk Floodway Ratio in SFHA Bldgs.	83 27.4%	43 12.8%	1 0.3%	124 47.5%	14 3.9%	0 0.0%	9.9%
Structures in Estimated Depths of Greater than 10 ft	0	0	34	0	0	2	-



White Sulphur Springs, June 2016



White Sulphur Springs, June 2016

Building Types / Values	White Sulphur Springs	Rainelle	Clendenin	Richwood	Marlinton	Camden-on-Gauley	Statewide Ratio
Building Value in Floodplain	\$24,475K	\$17,261K	\$19,351K	\$11,754K	\$44,762K	\$574K	-
Exposed Residential Count Ratio	84.7%	73.6%	74.2%	79.9%	57.8%	61.9%	80.9%
Residential Value in Floodplain	\$15,489K	\$9,488K	\$12,851K	\$6,447K	\$10,840K	\$263K	28.3%
Ratio of Total Floodplain Value	63.8%	55.0%	66.4%	54.8%	24.2%	45.8%	-
Non-Residential Value in Floodplain	\$8,986K	\$7,773K	\$6,500K	\$5,307K	\$33,922K	\$311K	-

Building Year / New Construction	White Sulphur Springs	Rainelle	Clendenin	Richwood	Marlinton	Camden-on-Gauley	Statewide Ratio
Pre-FIRM in Floodplain Ratio	86.7%	77.2%	83.8%	92.0%	88.0%	90.5%	84.7%
Post-FIRM in Floodplain Ratio	13.3%	22.8%	16.2%	8.0%	12.0%	9.5%	15.3%

Vulnerable Structures	White Sulphur Springs	Rainelle	Clendenin	Richwood	Marlinton	Camden-on-Gauley	Statewide Ratio
Manufactured Homes in Floodplain Ratio in High-Risk Floodplain Bldgs.	2 0.6%	14 4.2%	14 4.6%	39 13.5%	23 5.8%	4 19.0%	8.9%
Floodplain Buildings with Basements Ratio	21.1%	7.1%	40.4%	13.5%	24.3%	30.7%	41.6%
One-Story Floodplain Residential Buildings Ratio	82.0%	93.5%	79.5%	77.9%	68.4%	61.5%	69.3%
Renter-Occupied Housing in Floodplain Ratio	39.8%	40.3%	27.7%	24.7%	55.8%	23.1%	35.8%
Low-Value (< \$10K) Floodplain Buildings Ratio	6.2%	15.7%	8.6%	23.2%	7.3%	33.3%	5.4%



Marlinton, November 1985



Marlinton, November 1985

Significant Structures	White Sulphur Springs	Rainelle	Clendenin	Richwood	Marlinton	Camden-on-Gauley
Floodplain Essential Facilities	1	2	2	3	6	1
Floodplain Non-Hist. Community Assets	7	6	15	8	13	1
Floodplain Historical Community Assets	0	0	121	10	5	0

Among the Top 20% Incorporated Communities



Richwood, June 2016

People / Social Risk



Rainelle, June 2016



White Sulphur Springs, June 2016

Human Exposure & Impacts Indicators	White Sulphur Springs	Rainelle	Clendenin	Richwood	Marlinton	Camden-on-Gauley	Statewide Ratio
Population Residing in High-Risk Floodplains	685	564	876	621	1,138	41	8.8%
Ratio in Community Population	25.8%	45.6%	67.5%	23.8%	85.6%	23.3%	-
Population Displaced	466	473	820	440	1,010	28	5.9%
Ratio in Community Population	17.5%	38.3%	63.2%	16.9%	76.0%	15.9%	-
Short-Term Shelter Population	91	107	134	101	201	6	-
Companion Pets	26	33	25	25	35	1	-

