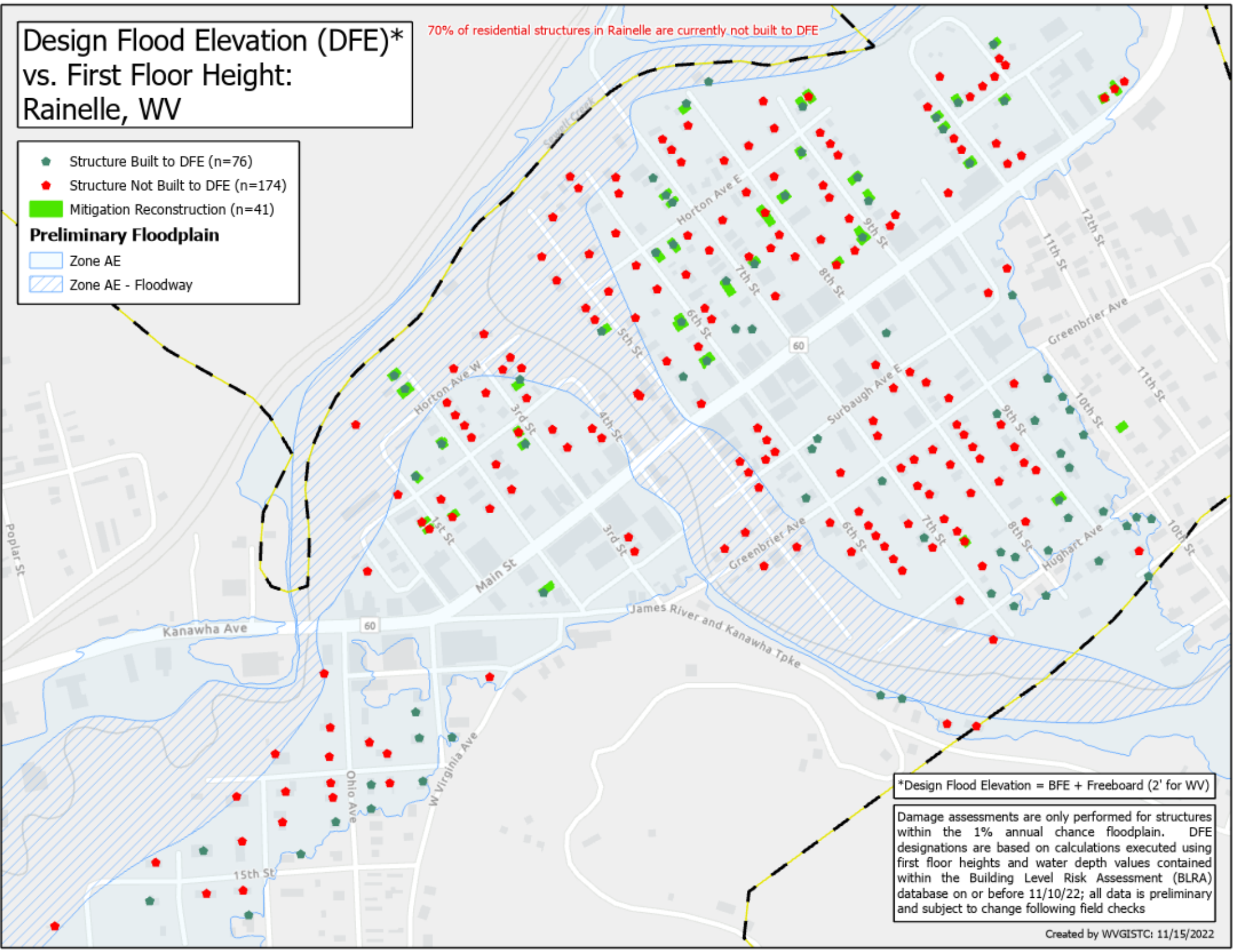


Design Flood Elevation (DFE)* vs. First Floor Height: Rainelle, WV

70% of residential structures in Rainelle are currently not built to DFE

- ◆ Structure Built to DFE (n=76)
 - ◆ Structure Not Built to DFE (n=174)
 - Mitigation Reconstruction (n=41)
- Preliminary Floodplain**
- Zone AE
 - Zone AE - Floodway



*Design Flood Elevation = BFE + Freeboard (2' for WV)

Damage assessments are only performed for structures within the 1% annual chance floodplain. DFE designations are based on calculations executed using first floor heights and water depth values contained within the Building Level Risk Assessment (BLRA) database on or before 11/10/22; all data is preliminary and subject to change following field checks