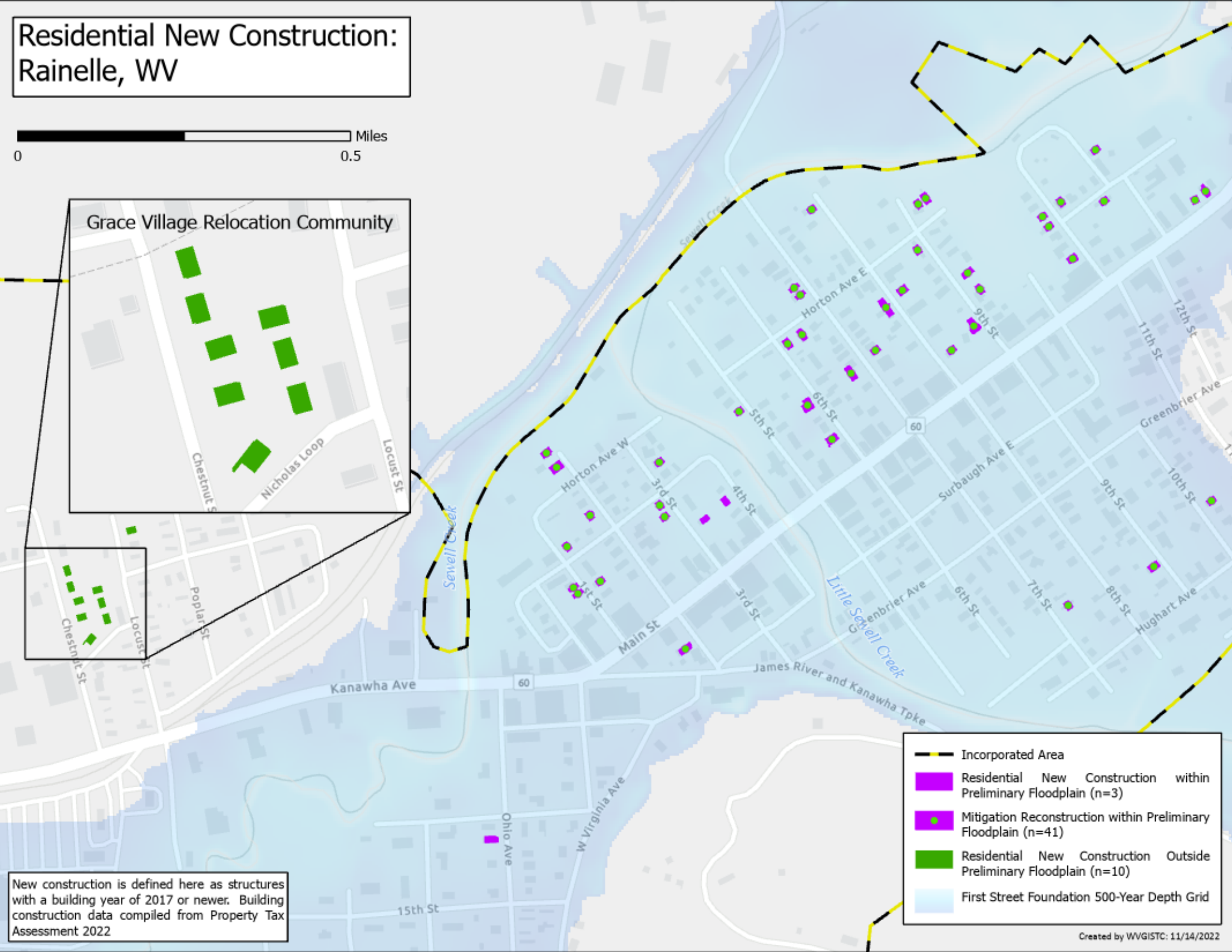
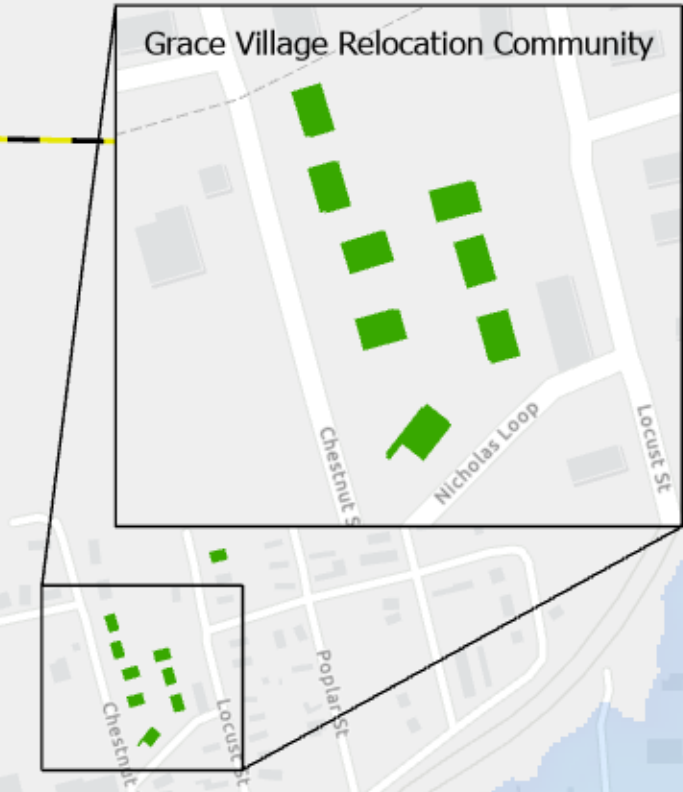


# Residential New Construction: Rainelle, WV

0 0.5 Miles

## Grace Village Relocation Community



New construction is defined here as structures with a building year of 2017 or newer. Building construction data compiled from Property Tax Assessment 2022

- Incorporated Area
- Residential New Construction within Preliminary Floodplain (n=3)
- Mitigation Reconstruction within Preliminary Floodplain (n=41)
- Residential New Construction Outside Preliminary Floodplain (n=10)
- First Street Foundation 500-Year Depth Grid