


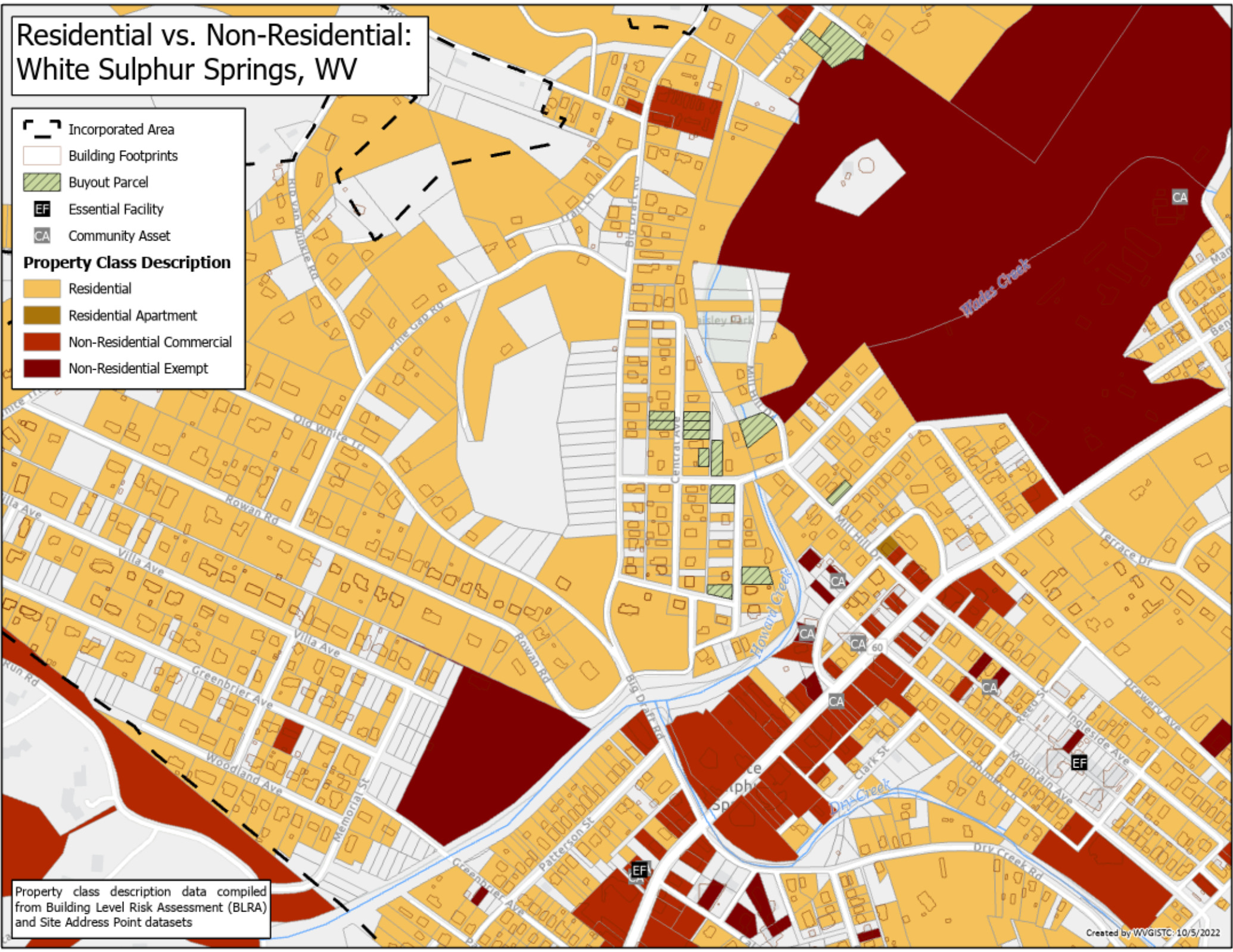


Residential vs. Non-Residential: White Sulphur Springs, WV

-  Incorporated Area
-  Building Footprints
-  Buyout Parcel
-  Essential Facility
-  Community Asset

Property Class Description

-  Residential
-  Residential Apartment
-  Non-Residential Commercial
-  Non-Residential Exempt



Property class description data compiled from Building Level Risk Assessment (BLRA) and Site Address Point datasets