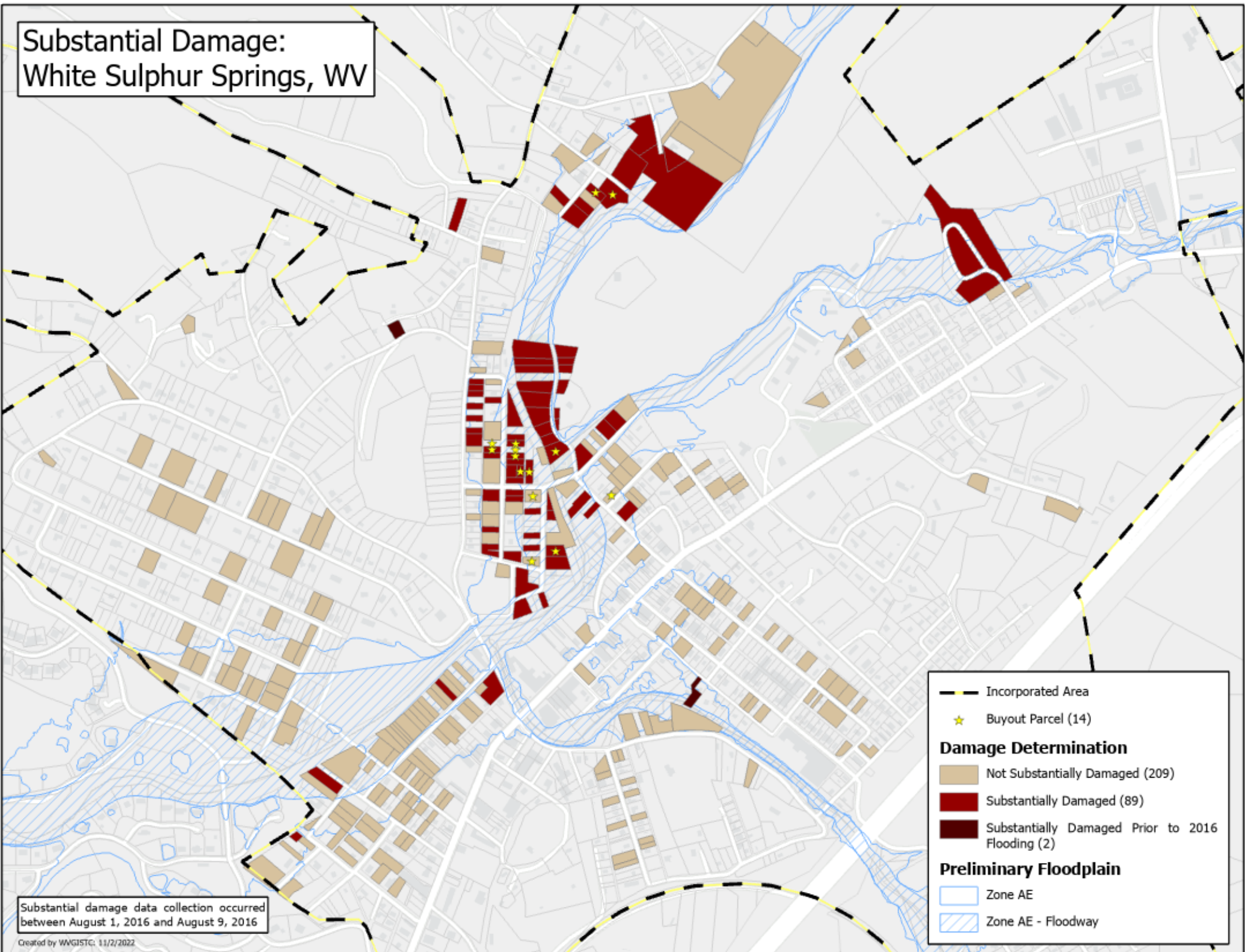


Substantial Damage: White Sulphur Springs, WV



Substantial damage data collection occurred
between August 1, 2016 and August 9, 2016

Created by WVGISTC: 11/2/2022

- Incorporated Area
- Buyout Parcel (14)

Damage Determination

- Not Substantially Damaged (209)
- Substantially Damaged (89)
- Substantially Damaged Prior to 2016 Flooding (2)

Preliminary Floodplain

- Zone AE
- Zone AE - Floodway