



The Historic 2016 Late June Flooding Event in West Virginia

[Weather.gov](#) > [Charleston, WV](#) > The Historic 2016 Late June Flooding Event in West Virginia

Charleston, WV

Weather Forecast Office

Event Summary

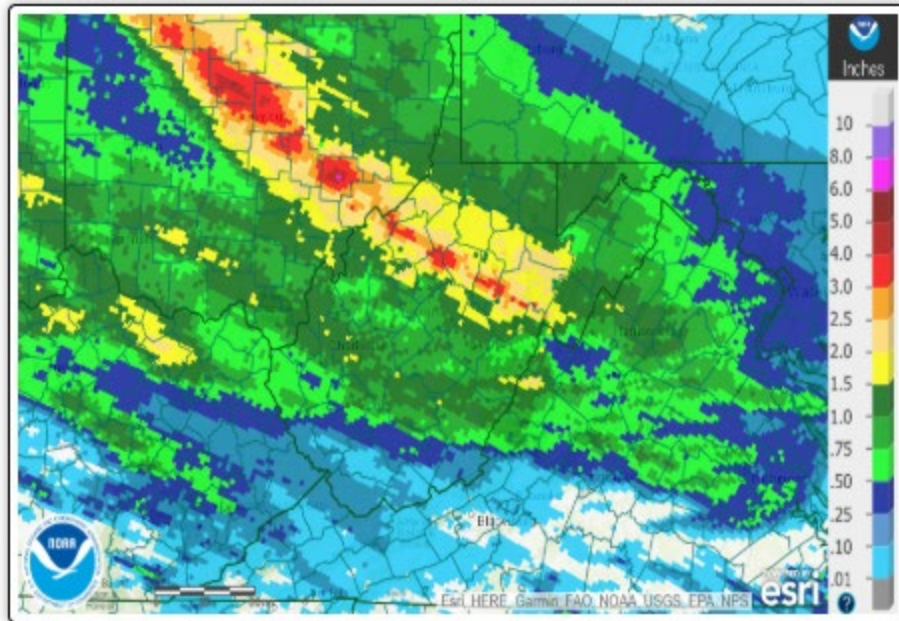
On June 23rd, 2016, several rounds of thunderstorms brought intense rainfall to most of the state of West Virginia. The most intense precipitation occurred over the Central/Southeastern portions of the state, with observed 24-hour precipitation totals reaching over 7" in some areas (Runa, WV - southwest Nicholas County). Approximately 25 miles northeast, the Gauley River near Craigsville (Nicholas County) reached a crest of 29.04' (USGS), setting a new record crest at that location and shattering the old record by over three feet. Sadly, flash flooding across the state resulted in 23 fatalities, including 6 in Kanawha County, as well as 1 in both Jackson and Ohio counties in West Virginia.

These rounds of thunderstorms were caused by a stationary front over the Ohio Valley Region. This allowed for continuous moisture transport and prolonged storm development over a small area for an extended period of time. Excessive rainfall over the harsh terrain caused extreme lowland flooding and various rivers to rise to flood stages. River basin flooding can cause flooding downstream from areas that receive higher rainfall totals, as well as prolonged flooding effects in river basins that receive large amounts of precipitation.

In addition, numerous reports of tree damage were received in association with the thunderstorms throughout the day, along with a few hail reports. One tornado (EF-1) was confirmed in Jackson County (WV) at approximately 5 AM on June 23rd.

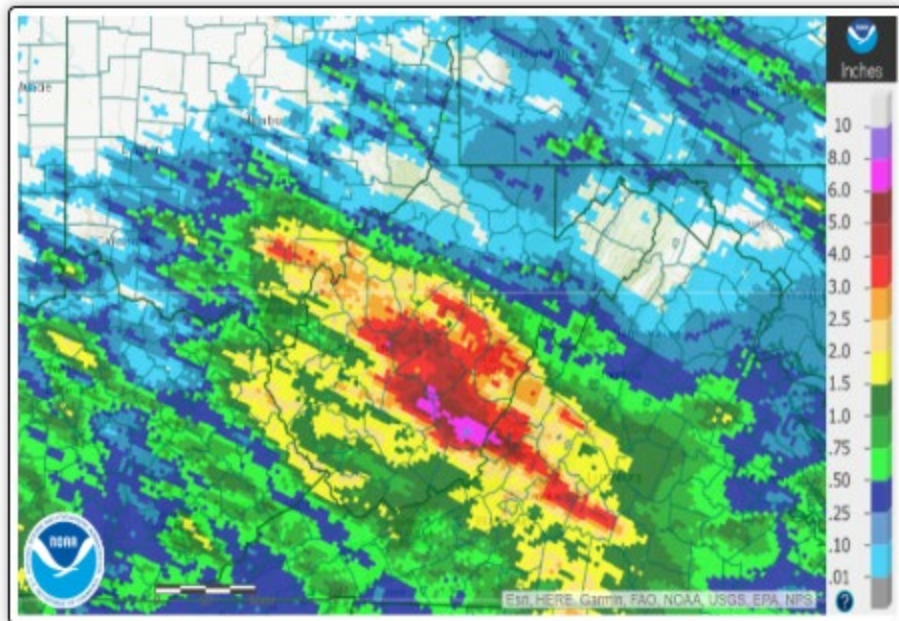
A State of Emergency was declared in 44 of 55 West Virginia counties, and 12 counties received a Presidential Disaster Declaration. An estimated half a million people were initially without power, and thousands of buildings all across the state were either damaged or destroyed, leaving many displaced (FEMA). The damage total was an estimated \$1.2 billion (CPI-Adjusted; NOAA).

Please click on the tabs below for more detailed information about this event. Please note that most images/loops can be expanded by clicking on them.



June 22-23 (8AM - 8AM) Estimated Rainfall Amounts

Image Source: Advanced Hydrologic Prediction Service



June 23-24 (8AM - 8AM) Estimated Rainfall Amounts

Image Source: Advanced Hydrologic Prediction Service