



West Virginia Risk Explorer

Localized risk assessment tools for analysis and visualization

West Virginia Flood Resiliency Framework (WVFRF)

**Kurt Donaldson
Behrang Bidadian**

Joint Legislative Committee on Flooding (JLCF)

September 2025



WV GIS Technical Center
West Virginia University



Director/Project Manager:

Kurt Donaldson



Mission:

- Spatial data infrastructure enhancement
- Advisory services and training programs in geographic information science
- GIS research and education
- **Support disaster resilience in the state:
Flood & Landslide risk assessment**

Faculty Director:

Aaron Maxwell



WVGISTC Team:

- Three Risk & GIS Analysts
- Two GIS Programmers/Developers
- Contractors/Consultants
- Graduate Research Assistants
- Student Workers



WV GIS Technical Center (WVGISTC)

WVU Department of Geology & Geography
330 Brooks Hall
P.O. Box 6300
Morgantown, WV 26506
Phone: (304) 293-0557
Email:
kurt.donaldson@mail.wvu.edu
behrang.bidadian@mail.wvu.edu

GOVERNMENT & NON-PROFIT ORGANIZATIONS



WV State Resiliency
Office



Greenbrier County Homeland Security & Emergency
Management



WV Emergency Management
Division



West Virginia Voluntary Organizations Active in Disaster
(WV VOAD)



Meadow River Valley Association (MRVA)

FUNDING SPONSORS



FEMA Region 3

Federal Emergency Management Agency (FEMA) Region 3 Office



RAPID.
LOCAL.
CO-CREATED.
IMPACTFUL.

**CIVIC
INNOVATION
CHALLENGE**

National Science Foundation

WV Flood Resiliency Framework (WVFRF)



A virtual hub of risk assessment, visualization, planning, and training resources for building community flood resiliency in WV

Flood Visualizations



WV Flood Tool



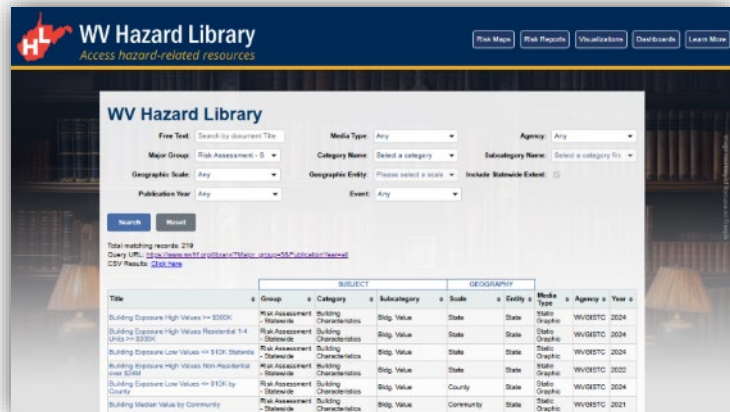
Flood Dashboards



WV Risk Explorer



Example Tools



Hazard Library

RISK TOOLS

- WV Risk Explorer
- WV Flood Tool
- Visualizations
- Dashboards

9 Geographic Scales

COMMUNITY ENGAGEMENT

- Focused Outreach Meetings
- Flood Symposium
- Resiliency Tools & Products
- Learning Resources & Reports



Community Engagement Meeting

HAZARD LIBRARY

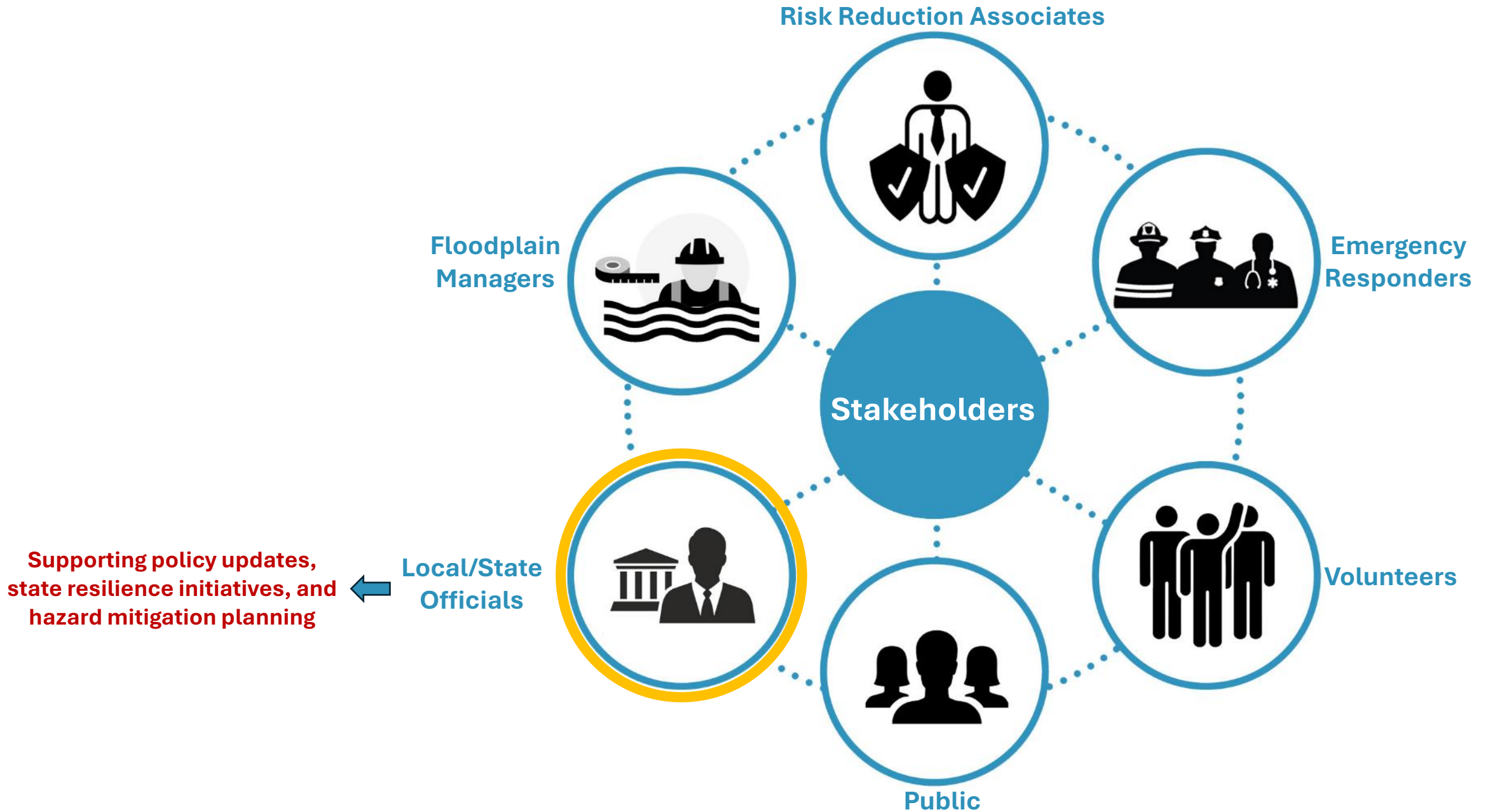
Search online hazard resources by title, subject, media, event, geography, data, etc.

STAKEHOLDERS

- Risk Reduction Associates
- Emergency Responders
- Floodplain Managers
- Local Officials
- Volunteers
- Public



Flood Symposium Stakeholders



WVFRF (BETA)

[PROJECT OVERVIEW](#) [WV RISK EXPLORER](#) [WV FLOOD TOOL](#) [CONTRIBUTORS](#) [CONTACT US](#)

WEST VIRGINIA FLOOD RESILIENCY FRAMEWORK



Image courtesy of The Atlantic

A virtual hub of risk assessment, visualization, planning, and training resources for building community flood resiliency in West Virginia

PRIMARY TOOLS



WV Risk Explorer



WV Flood Tool



WV Property Viewer



WV Hazard Library

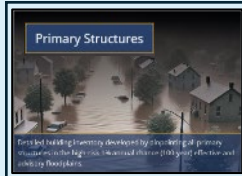
West Virginia Risk Explorer (WVRE)



■ Risk Assessment Tools

- Localized riverine flood risk assessment including a broad range of risk categories by aggregating detailed building-level data at multiple scales
- Help identify the communities most at risk of riverine flooding for efficient allocation of limited mitigation resources

Building/Property-Level



Aggregated



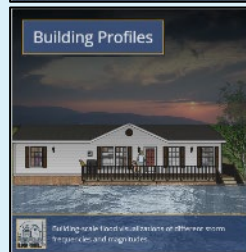
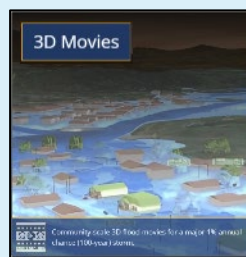
■ Risk Communication Tools

- Scenario-based 2D and 3D visualizations to translate complex data into accessible insights
- Facilitate risk comprehension for different groups of stakeholders to support informed decision-making and encourage public engagement

WV Flood Visualizations

Visualize 3D and 2D flood models at the community and building level scales.

Visualizations



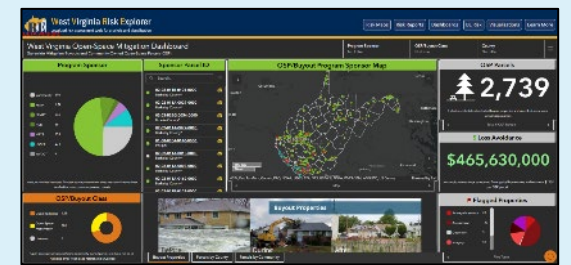
■ Mitigation Assessment Tools

- Quantifying of mitigation efforts such as elevation, relocation, and buyouts and calculation of loss estimates
- Enable planners and decision-makers to evaluate past and ongoing efforts, identify gaps, and prioritize future investments

Mitigated Structures Dashboard



Open-Space Mitigation Dashboard



■ Hazard Library and Data Access

- Access to online hazard resources including data, documents, and media searchable by title, subject, event, geography, and more.
- Allow users to access comprehensive datasets for use in analyses, maps, or applications to support planning, research, and decision-making related to hazard mitigation and response

WV Hazard Library

Search the document and visual media library for hazard information.

Hazard Library

Access Data

Download risk data for use in your own analyses, maps, or applications.

Access Data

WV Floodplain Building Inventory (BI)



Riverine Flood Exposure Assessment (Building-Level)

- All primary (insurable) structures in FEMA's 1%-annual-chance (100-yr) floodplain
- Community Assets (Historical & Non-Historical) in the 100-yr floodplain
- Essential Facilities in the 100-yr and 500-yr floodplains



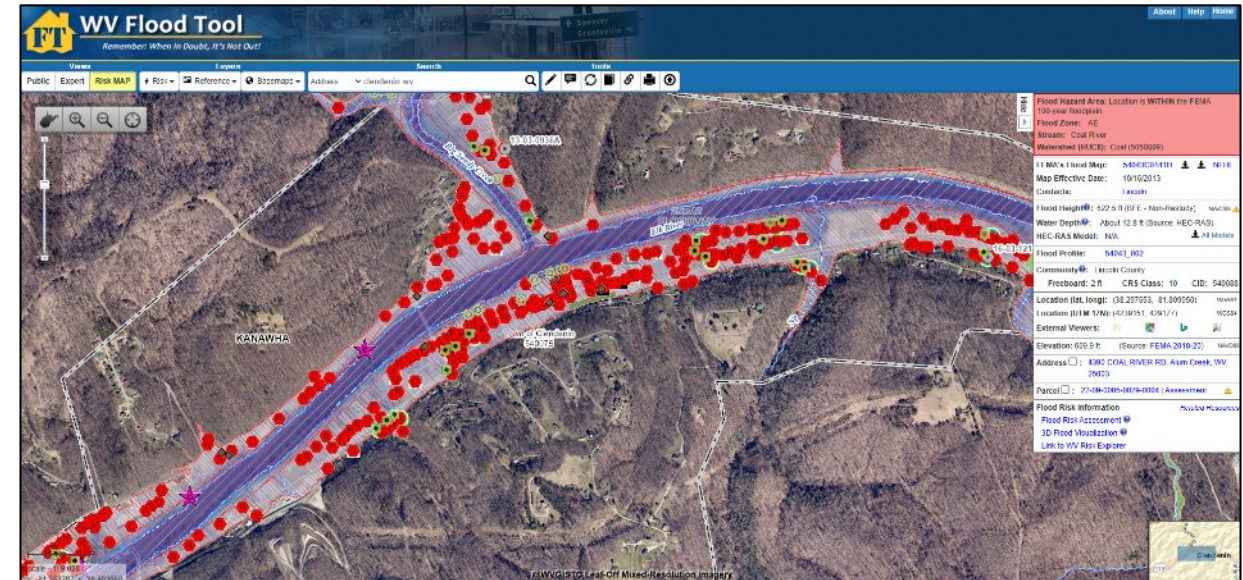
Essential Facilities



Community Assets



Product: WV Flood Tool  mapwv.gov/flood



Analytical & Visualization Tools at Multiple Scales



Political Boundaries

State



PDC Regions (11)



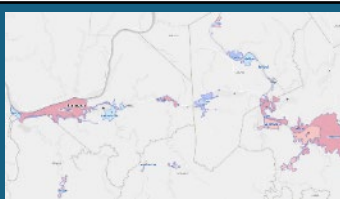
Counties (55)



Communities (284)



**Incorporated
Places
(229)**



**Unincorporated
Areas
(55)**



Drainage Areas / Streams

**Watersheds
(33)**



**Streams/Rivers
(156)**

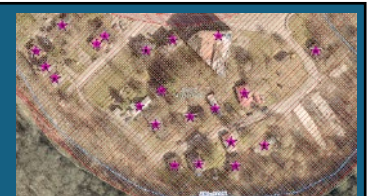


Property Levels

Parcels



Buildings



Overall Flood Risk

(1) FLOODPLAIN CHARACTERISTICS

Floodplain Area

Floodplain Length^{1 2}

Floodplain Depth^{1 2}

Flood Disaster Frequency

(2) BUILDING EXPOSURE

Building Floodplain Count^{1 2}

Building Floodway Count^{1 2}

Building Floodplain Ratio²

Building Density^{1 2}

(3) BUILDING CHARACTERISTICS

Building Value^{1 2}

Mobile Homes

Basement

One Story

Building Year*

(4) CRITICAL INFRASTRUCTURE

Essential Facilities

Roads Inundated

(5) COMMUNITY ASSETS

Historical Assets

Non-Historical Assets

(6) BUILDING DAMAGE LOSS

Substantial Damage Estimates^{*1 2}

Previous Claims

Repetitive Losses

(7) PEOPLE / SOCIAL VULNERABILITIES

Population in Floodplain

Population Displaced

WV Social Vulnerability Index

(8) OTHER HAZARDS

Landslides

Karst**

Dam/Levee Failure**

Used for the Index

* Multiple Indicators

** In Progress

¹ River/Stream Indicator

² Watershed Indicator

Riverine Flood Risk Assessment

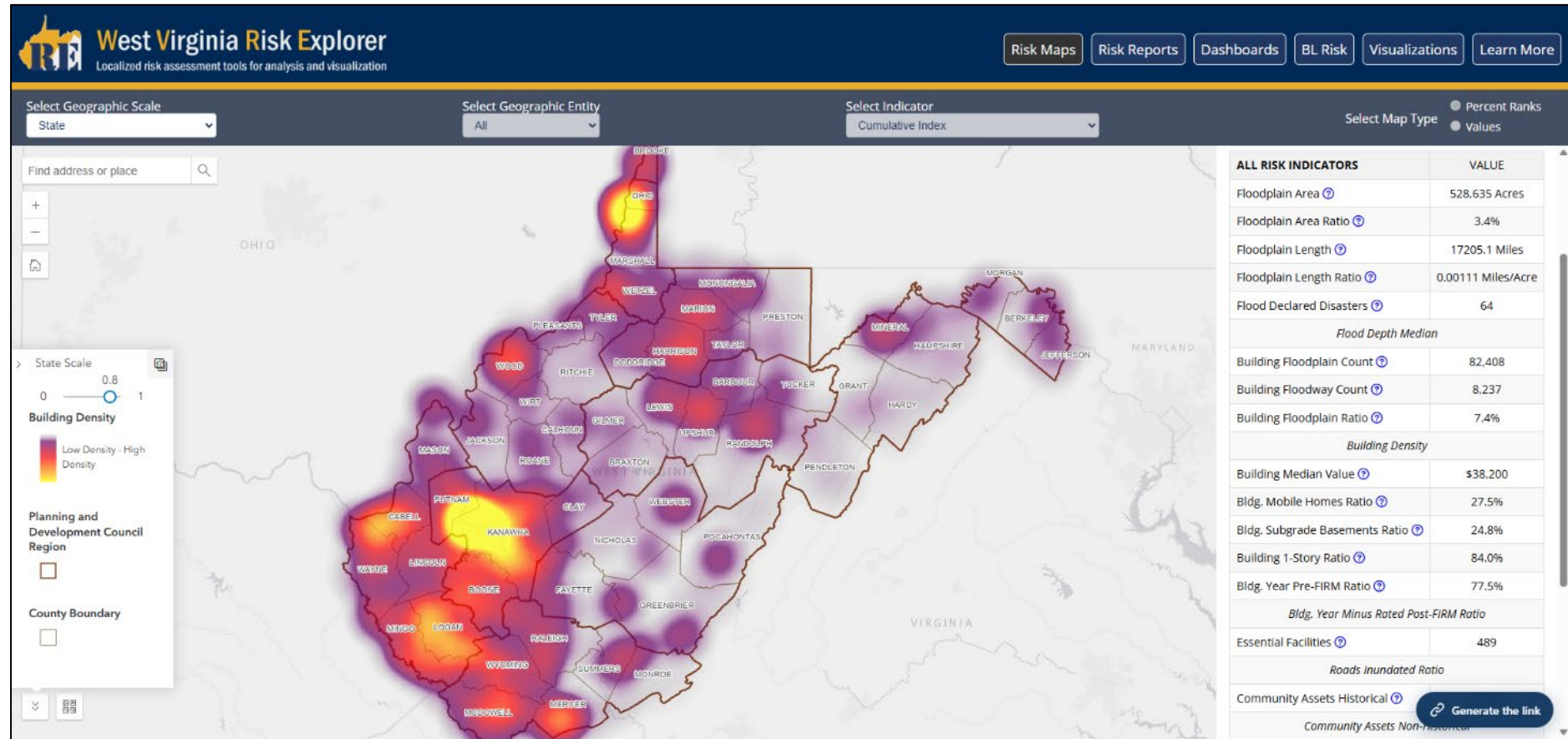
Statewide Flood Risk Assessment



WV Risk Explorer Maps

Interactively view and explore flood risk indicators on a map to identify areas of higher risk.

[Risk Maps](#)



Geographic Entities at VERY HIGH Risk (Top 10%)



RANK	All Communities	Index Score	Incorporated Places	Index Score	Unincorporated Areas	Index Score	Counties	Index Score	Regions	Index Score
1	New Martinsville - Incorporated	100.0%	Clendenin - Incorporated	100.0%	Kanawha County* - Unincorporated	100.0%	Kanawha	100.0%	PDC Region 2	100%
2	Boone County* - Unincorporated	99.6%	New Martinsville - Incorporated	99.5%	Boone County* - Unincorporated	98.1%	Boone	98.1%	PDC Region 3	90%
3	Clendenin - Incorporated	99.2%	Alderson** - Incorporated	99.1%	Wayne County* - Unincorporated	96.2%	McDowell	96.2%		
4	Marlinton - Incorporated	98.9%	Marlinton - Incorporated	98.6%	McDowell County* - Unincorporated	94.4%	Logan	94.4%		
5	Wheeling** - Incorporated	98.5%	Kimball - Incorporated	98.2%	Mingo County* - Unincorporated	92.5%	Mingo	92.5%		
6	McDowell County* - Unincorporated	98.2%	Parsons - Incorporated	97.8%	Logan County* - Unincorporated	90.7%	Wyoming	90.7%		
7	Alderson** - Incorporated	97.8%	Wheeling** - Incorporated	97.3%						
8	Wayne County* - Unincorporated	97.5%	Northfork - Incorporated	96.9%						
9	Parsons - Incorporated	97.1%	Danville - Incorporated	96.4%						
10	Kanawha County* - Unincorporated	96.8%	Madison - Incorporated	96.0%						
11	Madison - Incorporated	96.4%	Milton - Incorporated	95.6%						
12	Kimball - Incorporated	96.1%	Oceana - Incorporated	95.1%						
13	Lincoln County* - Unincorporated	95.7%	Keystone - Incorporated	94.7%						
14	Milton - Incorporated	95.4%	Wellsburg - Incorporated	94.2%						
15	Mingo County* - Unincorporated	95.0%	Gary - Incorporated	93.8%						
16	Logan County* - Unincorporated	94.6%	Rowlesburg - Incorporated	93.4%						
17	Danville - Incorporated	94.3%	Grantsville - Incorporated	92.9%						
18	Wellsburg - Incorporated	93.9%	Richwood - Incorporated	92.5%						
19	Oceana - Incorporated	93.6%	Rainelle - Incorporated	92.1%						
20	Rowlesburg - Incorporated	93.2%	Mannington - Incorporated	91.6%						
21	Northfork - Incorporated	92.9%	Spencer - Incorporated	91.2%						
22	Gary - Incorporated	92.5%	Welch - Incorporated	90.7%						
23	Wyoming County* - Unincorporated	92.2%	Buckhannon - Incorporated	90.3%						
24	Welch - Incorporated	91.8%								
25	Summers County* - Unincorporated	91.5%								
26	Buckhannon - Incorporated	91.1%								
27	Richwood - Incorporated	90.8%								
28	Ceredo - Incorporated	90.4%								
29	Mannington - Incorporated	90.1%								

RANK	Streams (Top 20)	Index Score	Watersheds	Index Score
1	Coal River	100.0%	Lower Kanawha	100%
2	Ohio River	99.7%	Coal	96.7%
3	Little Coal River	99.5%	Upper Kanawha	93.5%
4	Greenbrier River	99.3%	Tug	90.3%
5	Davis Creek	99.1%		
6	Island Creek	98.9%		
7	Kanawha River	98.7%		
8	Campbells Creek	98.4%		
9	Wheeling Creek	98.2%		
10	Pocatalico River	98.0%		
11	Cacapon River	97.8%		
12	Big Coal River	97.6%		
13	Mud River	97.4%		
14	Cabin Creek	97.1%		
15	Pond Fork	96.9%		
16	Elk River	96.7%		
17	Twelvepole Creek	96.5%		
18	Buckhannon River	96.3%		
19	South Branch Potomac River	96.1%		
20	Paint Creek	95.8%		

Last update: Aug. 2024
Streams & Watersheds: Jul. 2025
Colors:
Black --> Incorporated places
Black on yellow** --> Split communities
Black on blue: Incorporated communities included in the detailed risk report (Camden-on-Gauley, Clendenin, Marlinton, Rainelle, Richwood, and White Sulphur Springs)
Brown on gray --> Unincorporated areas
Green --> Counties (Total)

Kanawha County Risk Report



WV Risk Explorer Reports

View and download flood risk assessment and comparison reports in more detail.

Risk Reports

Kanawha County

WV PDC Region: 3

September 2025

(County Scale, Top 20 Percent Risk Indicators Report)

Cumulative Flood Risk Score

1

100% Very High

Ranks 1st of 55 counties in the state

13 of 25 risk indicators among the top 10% counties.

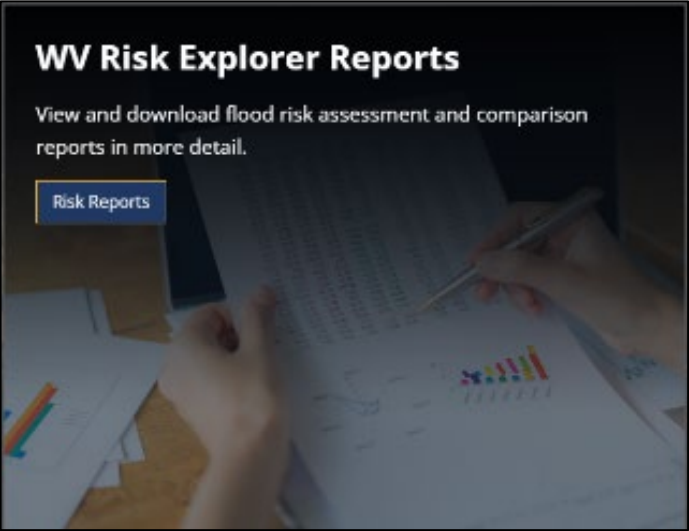
14 of 25 risk indicators among the top 20% counties.

View Risk Map

View Flood Tool

Flood Risk Index Scores for Kanawha County				
Table 2. Flood Risk Index Scores: A Cumulative Flood Risk Index of 25 flood factors reveals that Kanawha County ranks 1st of 55 counties in the state with a Cumulative Flood Risk Score of 100%. Below are 14 flood risk indicators for which Kanawha County is ranked among the top 20% counties.				
CATEGORY	FLOOD RISK INDICATOR	VALUE FOR KANAWHA	INDICATOR SCORE (0 - 100%)	INDICATOR RATING
Floodplain Characteristics	Floodplain Area	23,929 Acres	98.1%	VERY HIGH
	Floodplain Length	911.2 Miles	100.0%	VERY HIGH
	Flood Declared Disasters	24	94.4%	VERY HIGH
Building Exposure	Building Floodplain Count	13,452	100.0%	VERY HIGH
	Building Floodway Count	1,462	100.0%	VERY HIGH
	Building Density	0.56 /Acre	94.4%	VERY HIGH
Building Characteristics	Building Median Value	\$53,100	81.4%	Very High
Critical Infrastructure	Essential Facilities	80	100.0%	VERY HIGH
	Roads Inundated Ratio	11.8%	90.7%	VERY HIGH
Community Assets	Community Assets Historical	208	96.2%	VERY HIGH
	Community Assets Non-Historical	261	100.0%	VERY HIGH
Building Damage Loss	Bldg. Substantial Damage Count	975	100.0%	VERY HIGH
	Bldg. Previous Damage Claims	2,376	96.2%	VERY HIGH
	Bldg. Repetitive Loss Structures	779	96.2%	VERY HIGH

Clendenin Risk Report



Clendenin - Incorporated

County: Kanawha, WV PDC Region: 3
(Incorporated Place Scale, All Risk Indicators Report)

September 2025

Cumulative Flood Risk Score

100% Very High

Ranks 1st of 229 incorporated places in the state

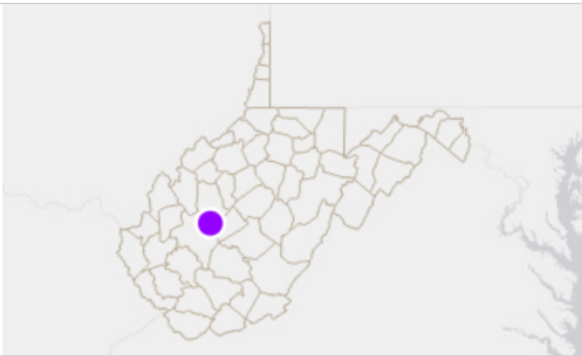
1

9 of 25 risk indicators among the top 10% incorporated places.

15 of 25 risk indicators among the top 20% incorporated places.

View Risk Map

View Flood Tool



Flood Risk Index Scores for Clendenin - Incorporated

Table 2. Flood Risk Index Scores: A Cumulative Flood Risk Index of 25 flood factors reveals that **Clendenin - Incorporated** ranks 1st of 229 incorporated places in the state with a Cumulative Flood Risk Score of 100%. Below are 15 flood risk indicators for which Clendenin - Incorporated is ranked among the top 20% incorporated places.

CATEGORY	FLOOD RISK INDICATOR	VALUE FOR CLENDENIN - INCORPORATED	INDICATOR SCORE (0 - 100%)	INDICATOR RATING
Floodplain Characteristics	Flood Declared Disasters ?	24	88.1%	Very High
	Flood Depth Median ?	6.4 Ft	96.0%	VERY HIGH
Building Exposure	Building Floodplain Count ?	302	91.2%	VERY HIGH
	Building Floodplain Ratio ?	52.5%	97.8%	VERY HIGH
	Building Density ?	1.29 /Acre	80.2%	Very High
Building Characteristics	Bldg. Year Minus Rated Post-FIRM Ratio ?	10.9%	88.5%	Very High
Critical Infrastructure	Roads Inundated Ratio ?	51.8%	98.6%	VERY HIGH 4
Community Assets	Community Assets Historical ?	54	98.2%	VERY HIGH 5
	Community Assets Non-Historical ?	15	97.3%	VERY HIGH 6
Building Damage Loss	Bldg. Substantial Damage Count ?	46	98.2%	VERY HIGH 5
	Bldg. Substantial Damage Ratio ?	15.2%	88.5%	Very High
	Bldg. Previous Damage Claims ?	122	88.1%	Very High
	Bldg. Repetitive Loss Structures ?	24	83.3%	Very High
People / Social Vulnerabilities	Population in Floodplain Ratio ?	66.8%	94.7%	VERY HIGH
	Population Displaced Ratio ?	63.0%	96.9%	VERY HIGH 8

Clendenin – Charleston Risk Comparison



Flood Risk Comparison Report

(Incorporated Place Scale)

September
2025

For comparison, this report summarizes the Cumulative Flood Risk Index as well as 25 flood factors in seven major risk categories for the selected Incorporated Places.

Flood Risk Index Comparison

Table 1. Flood Risk Index: Below is a comparison of the Cumulative Flood Risk Index for the selected Incorporated Places.

#	STATE INDEX RANK	INCORPORATED PLACE	COUNTY	CUMULATIVE FLOOD RISK INDEX	
				INDEX SCORE	INDEX RATING
1	1	Clendenin - Incorporated	Kanawha	100%	VERY HIGH
2	39	Charleston - Incorporated	Kanawha	83.3%	Very High

Critical Infrastructure Comparison

Table 5. Critical Infrastructure: Below is a comparison of 2 flood factors under the Critical Infrastructure category for the selected Incorporated Places.

#	STATE CATEGORY RANK	INCORPORATED PLACE	CRITICAL INFRASTRUCTURE		CATEGORY SCORE
			ESSENTIAL FACILITIES	ROADS INUNDATED RATIO	
1	13	Clendenin - Incorporated	2	51.8%	94.7%
2	62	Charleston - Incorporated	20	5.6%	73.2%

Community Assets Comparison

Table 6. Community Assets: Below is a comparison of 2 flood factors under the Community Assets category for the selected Incorporated Places.

#	STATE CATEGORY RANK	INCORPORATED PLACE	COMMUNITY ASSETS		CATEGORY SCORE
			COMMUNITY ASSETS HISTORICAL	COMMUNITY ASSETS NON-HISTORICAL	
1	2	Charleston - Incorporated	154	55	99.5%
2	4	Clendenin - Incorporated	54	15	98.6%

Building Damage Loss Comparison

Table 7. Building Damage Loss: Below is a comparison of 4 flood factors under the Building Damage Loss category for the selected Incorporated Places.

#	STATE CATEGORY RANK	INCORPORATED PLACE	BUILDING DAMAGE LOSS				CATEGORY SCORE
			BLDG. SUBSTANTIAL DAMAGE COUNT	BLDG. SUBSTANTIAL DAMAGE RATIO	BLDG. PREVIOUS DAMAGE CLAIMS	BLDG. REPETITIVE LOSS STRUCTURES	
1	9	Clendenin - Incorporated	46	15.2%	122	24	96.4%
2	11	Charleston - Incorporated	35	2.3%	357	113	95.6%

Floodplain Characteristics Comparison

Table 2. Floodplain Characteristics: Below is a comparison of 4 flood factors under the Floodplain Characteristics category for the selected Incorporated Places.

#	STATE CATEGORY RANK	INCORPORATED PLACE	FLOODPLAIN CHARACTERISTICS				CATEGORY SCORE
			FLOODPLAIN AREA RATIO	FLOODPLAIN LENGTH RATIO	FLOOD DECLARED DISASTERS	FLOOD DEPTH MEDIAN	
1	22	Clendenin - Incorporated	24.1%	0.00389 Miles/Acre	24	6.4 Ft	90.7%
2	150	Charleston - Incorporated	4.7%	0.00175 Miles/Acre	24	1.7 Ft	34.6%

Building Exposure Comparison

Table 3. Building Exposure: Below is a comparison of 4 flood factors under the Building Exposure category for the selected Incorporated Places.

#	STATE CATEGORY RANK	INCORPORATED PLACE	BUILDING EXPOSURE				CATEGORY SCORE
			BUILDING FLOODPLAIN COUNT	BUILDING FLOODWAY COUNT	BUILDING FLOODPLAIN RATIO	BUILDING DENSITY	
1	18	Clendenin - Incorporated	302	4	52.5%	1.29 /Acre	92.1%
2	32	Charleston - Incorporated	1,512	25	5.4%	1.57 /Acre	86.4%

Building Characteristics Comparison

Table 4. Building Characteristics: Below is a comparison of 6 flood factors under the Building Characteristics category for the selected Incorporated Places.

#	STATE CATEGORY RANK	INCORPORATED PLACE	BUILDING CHARACTERISTICS						CATEGORY SCORE
			BUILDING MEDIAN VALUE	BLDG. MOBILE HOMES RATIO	BLDG. SUBGRADE BASEMENTS RATIO	BUILDING 1-STORY RATIO	BLDG. YEAR PRE-FIRM RATIO	BLDG. YEAR MINUS RATED POST-FIRM RATIO	
1	50	Clendenin - Incorporated	\$49,000	6.4%	34.8%	75.5%	84.5%	10.9%	78.5%
2	81	Charleston - Incorporated	\$47,900	0.7%	50.1%	70.8%	90.8%	1.4%	64.9%

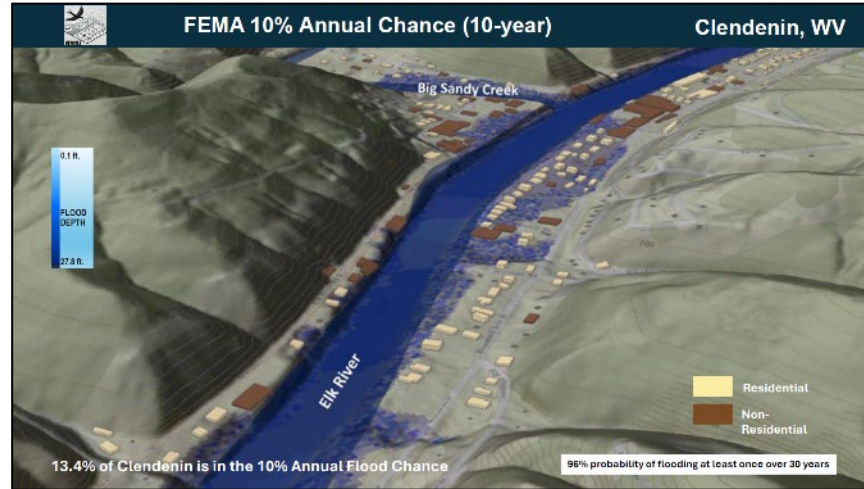
People / Social Vulnerabilities Comparison

Table 8. People / Social Vulnerabilities: Below is a comparison of 3 flood factors under the People / Social Vulnerabilities category for the selected Incorporated Places.

#	STATE CATEGORY RANK	INCORPORATED PLACE	PEOPLE / SOCIAL VULNERABILITIES			CATEGORY SCORE
			POPULATION IN FLOODPLAIN RATIO	POPULATION DISPLACED RATIO	WV SOCIAL VULNERABILITY INDEX	
1	45	Clendenin - Incorporated	66.8%	63.0%	36.6%	80.7%
2	162	Charleston - Incorporated	6.4%	3.5%	15.0%	29.3%

Flood Visualizations

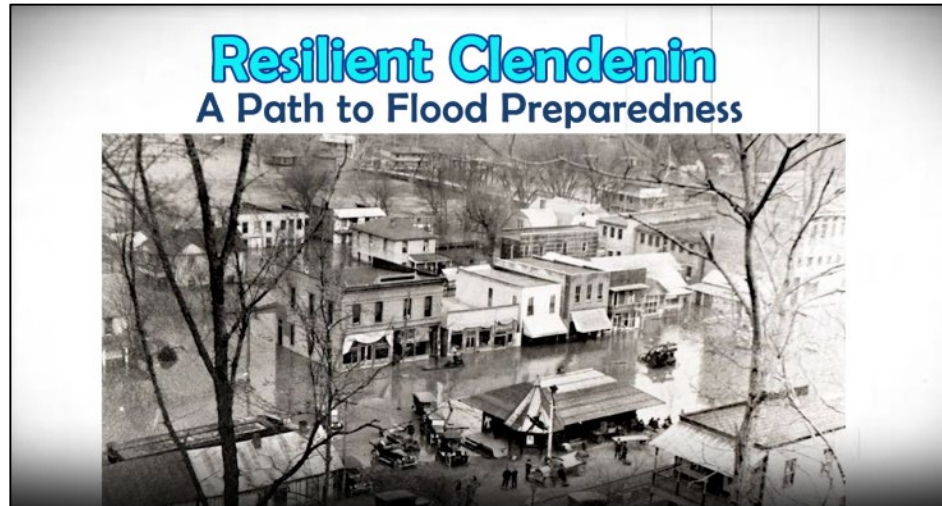
Visualization Tools Examples



Viewshed for Clendenin



Building Profile in Clendenin



3D Movie for Clendenin



Building Profile in Charleston

Flood Mitigation

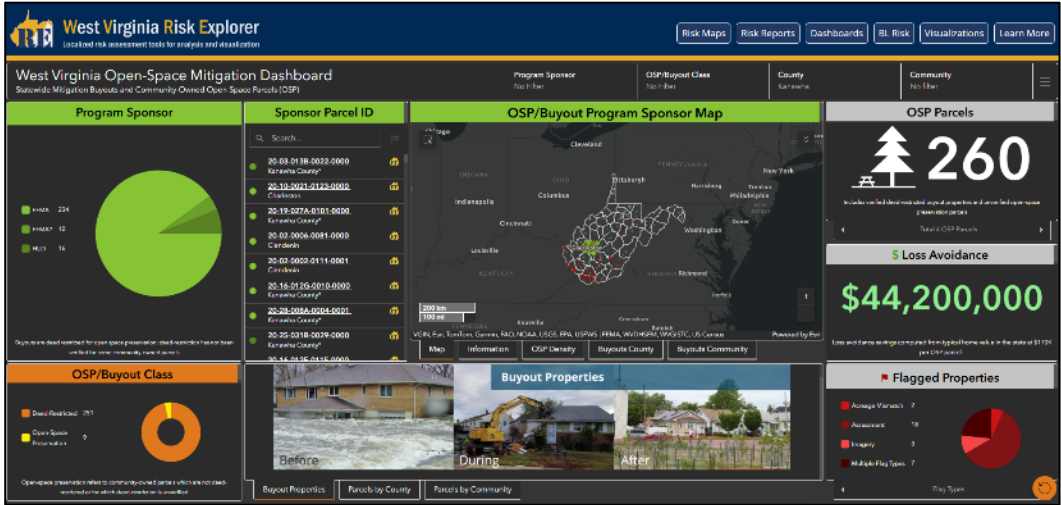
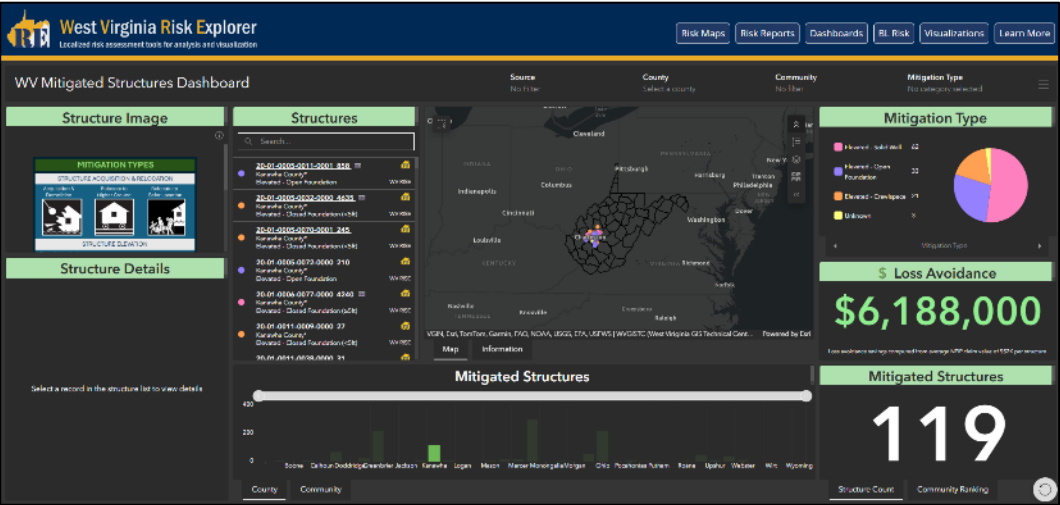
Mitigation Measures, Kanawha County & Clendenin



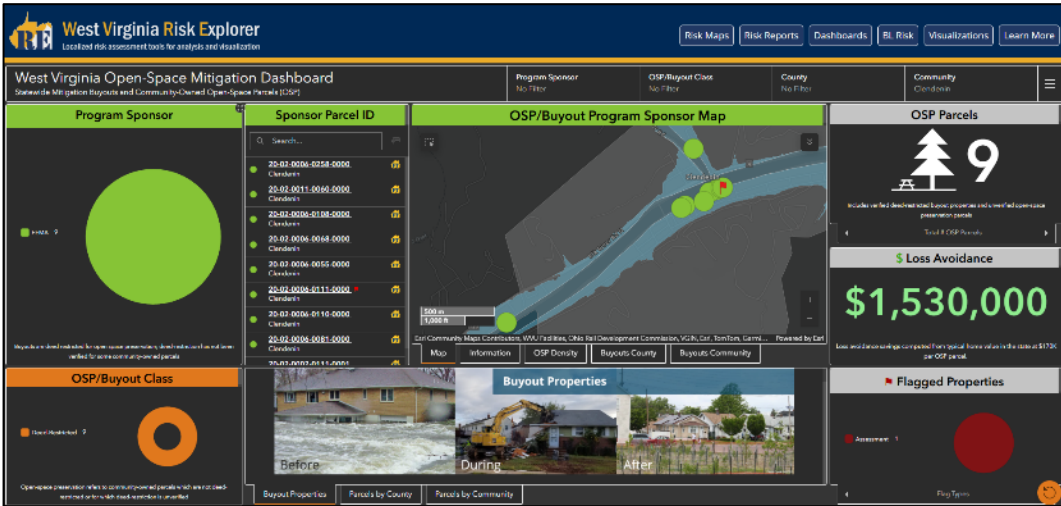
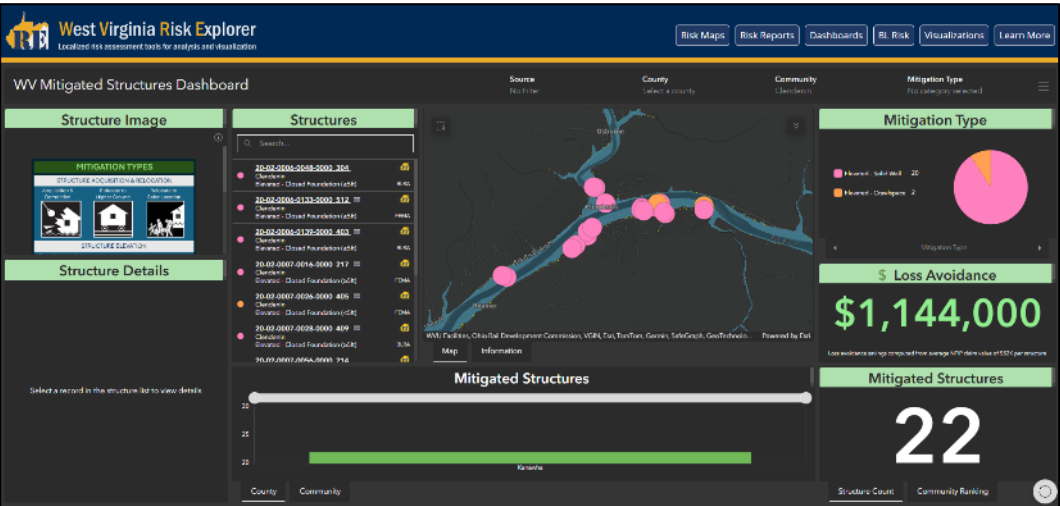
Mitigated Structures Inventoried

Mitigated/Buyout Parcels

Kanawha County



Clendenin



- **Hazard Library Finalization (coming soon)**

Expanded catalog of hazard layers and supporting data

- **Planned Updates**

Regular feature data updates, additions, and indicator refinements

- **User Feedback Loop**

Reporting and feedback for tool improvements

- **Mobile-Friendly Access**

Responsive design for field use

- **Expanded Hazard Coverage**

Landslide, Dam Failure, and Karst

- **Future Maintenance**

Ongoing functioning and system performance improvements

- **Training & Support**

User training sessions, documentation, and guidance



Links to Tools / Data



→ WV Flood Tool: <https://www.mapwv.gov/flood/>



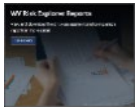
→ West Virginia Flood Resiliency Framework (WVFRF): <https://wvfrf.org/>



→ West Virginia Risk Explorer (WVRE) (Landing Page): <https://www.wvfrf.org/wvre/>



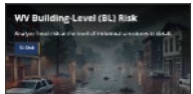
→ WV Risk Explorer Maps: https://wvfrf.org/wvre/map/?scaleid=3&gslid=&index=CUM_INDEX&type=pct



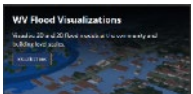
→ WV Risk Explorer Reports: <https://wvfrf.org/wvre/report/?entityid=68&scaleid=1&type=all>



→ WV Flood Dashboards: <https://wvfrf.org/wvre/dashboard/home/>



→ WV Building-Level (BL) Risk: <https://wvfrf.org/wvre/buildings/>



→ WV Flood Visualizations: <https://wvfrf.org/wvre/visualization/home/>



→ Access Data: <https://wvfrf.org/wvre/data/home/>



→ WV Hazard Library: <https://wvfrf.org/library/>



→ Landslide Tools: <https://wvfrf.org/wvre/landslides/>

Thank you!

Questions?



Email:

kurt.donaldson@mail.wvu.edu

behrang.bidadian@mail.wvu.edu

Backup Slides

Benefits of the Tools



■ Planning

- Enhancing state resiliency and hazard mitigation plans
- Updating emergency operation plans
- Prioritizing and allocating resources
- Identifying the need for more refined risk assessments



■ Risk Communications

- Encouraging community-level risk communication and engagement
- Educating new homeowners and renters
- Informing the insurance and mortgage industries



■ Mitigation

- Identifying areas of mitigation interest
- Supporting the development or enhancement of codes and standards
- Informing long-term community recovery



Unique Features of WV Risk Explorer Tools



- **Risk indicators Rankings to Identify Communities at Higher Risk in Risk Maps & Reports**

Interactively view and explore flood risk indicators on a map to identify areas of higher risk.

- **Interactive Downloadable Risk Reports by Multi-Scale Aggregation of Detailed Building-Level Inventory**

View and download flood risk assessment and comparison reports in more detail.

- **Sharable Queries for Risk Reports, Maps, and Tables**

Share your geographic selections along with data field queries for consistent use across teams.

- **Rationale and Recommendations for Risk Indicators**

Use the Technical Documentation to understand the rationale for the risk indicators and the recommendations associated with them.

- **Statewide Consistent Methodology and Risk Indicators**

In-depth flood risk indicators covering all of West Virginia uniformly, not just selected regions.

- **Flood Dashboards**

Use the interactive dashboards to analyze risk factors and mitigation measures.

- **Flood Visualizations**

Visualize 3D and 2D flood models at the community and building level scales.

- **Hazard Library Customized to West Virginia**

Search the document and visual media library for hazard information.

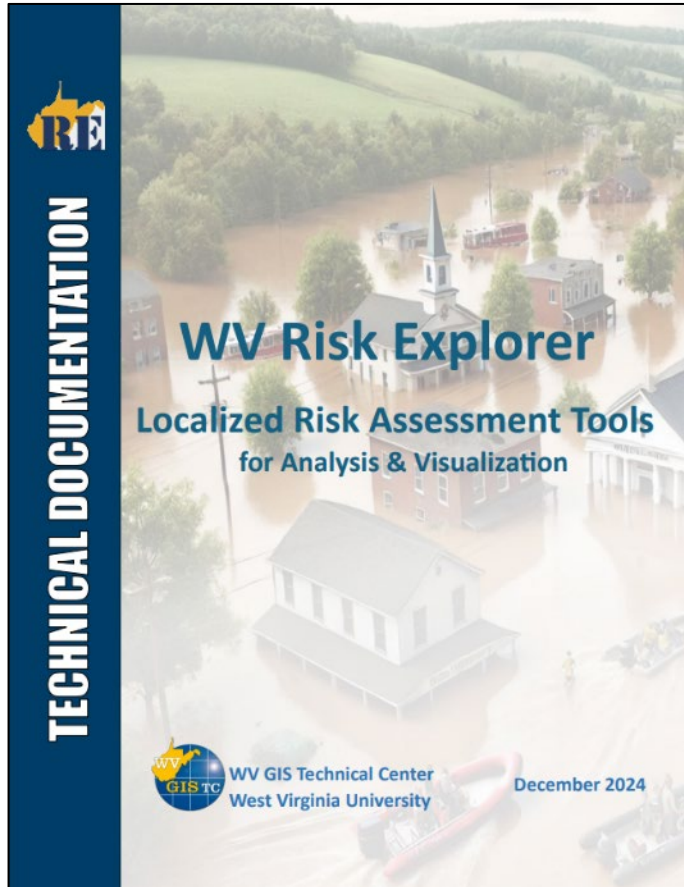
- **Data Access**

Download risk data for use in your own analyses, maps, or applications.

- **Scalable**

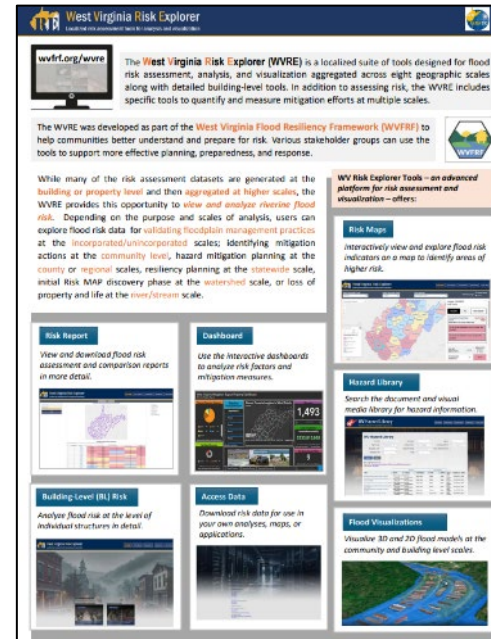
Scalable for other hazards such as landslides or enhancements to risk indicators.

WVRE Technical Document



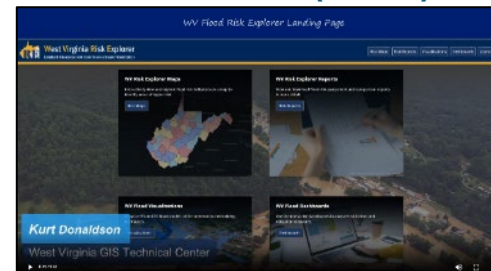
https://data.wvgis.wvu.edu/pub/RA/RI/WVRE/DOCS/WVRE_TechnicalDoc.pdf

WVRE One-Pager



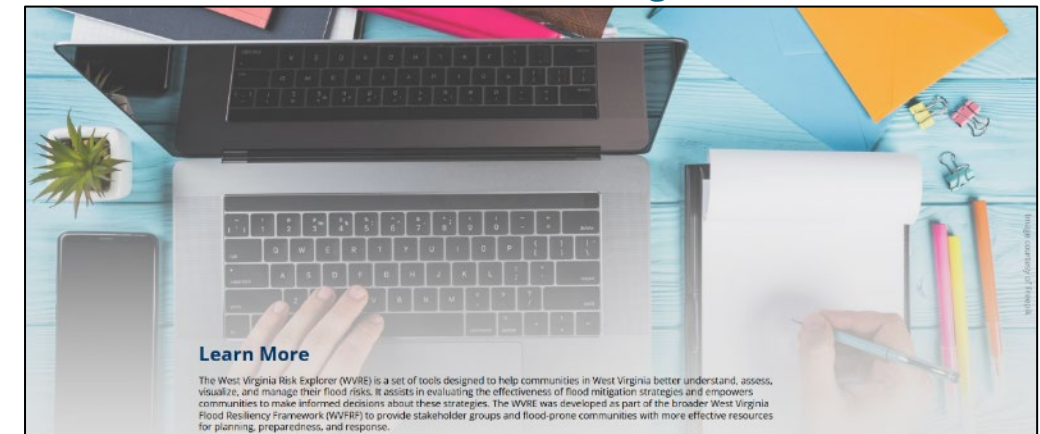
https://data.wvgis.wvu.edu/pub/RA/HL/WVFRF/Flyer/WVRE_Info_OnePager.pdf

WVRE Demo (Video)



https://data.wvgis.wvu.edu/pub/RA/HL/WVFRF/Video/WV_Risk_Explorer_Movie_20240826.mp4

WVRE Learn More Page



<https://wvfrf.org/wvre/more/>

Metadata Documents

Data Dictionary (Metadata) WV Risk Index (Rankings/Scores)

https://data.wvgis.wvu.edu/pub/RA/HL/Data/RA-AL/1a_AL-RISK-INDEX/2_Metadata/WV_RiskIndex_DataDictionary.pdf

Data Dictionary (Metadata) Risk Full Data Matrix

https://data.wvgis.wvu.edu/pub/RA/HL/Data/RA-AL/1b_AL-MATRIX/2_Metadata/Full_Matrix_DataDictionary.pdf

Metadata, Full Building-Level Risk Assessment (BLRA) for Primary Structures

https://data.wvgis.wvu.edu/pub/RA/HL/Data/RA-BL/2a_BL-BLRA/3_Metadata/Full_BLRA_Metadata.pdf

Metadata, Building-Level Significant Structures at Risk

https://data.wvgis.wvu.edu/pub/RA/HL/Data/RA-BL/2b_BL-SIG-STRC/1_All_Sig_Structures/2_Metadata/Significant_Structures_Metadata.pdf