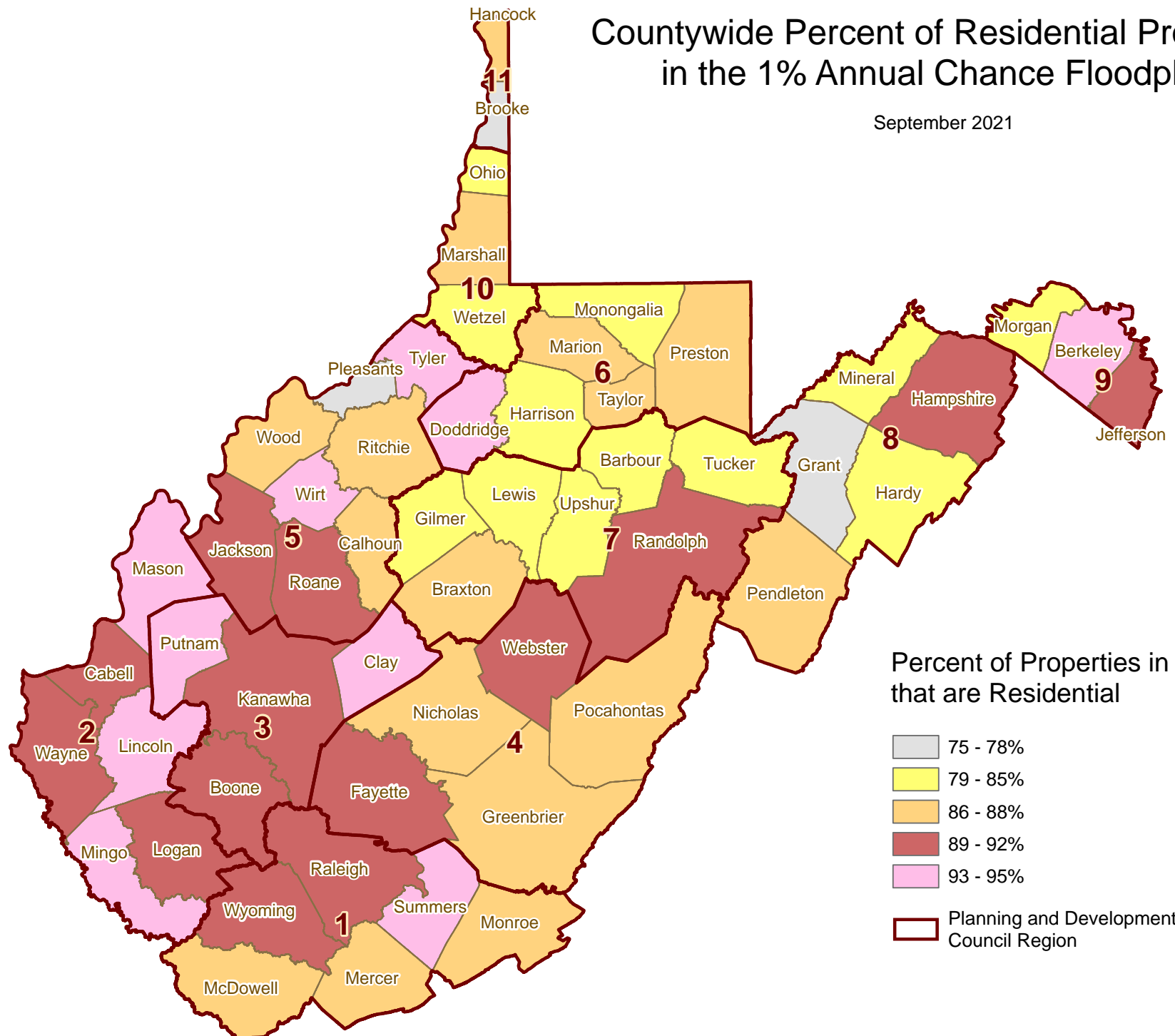


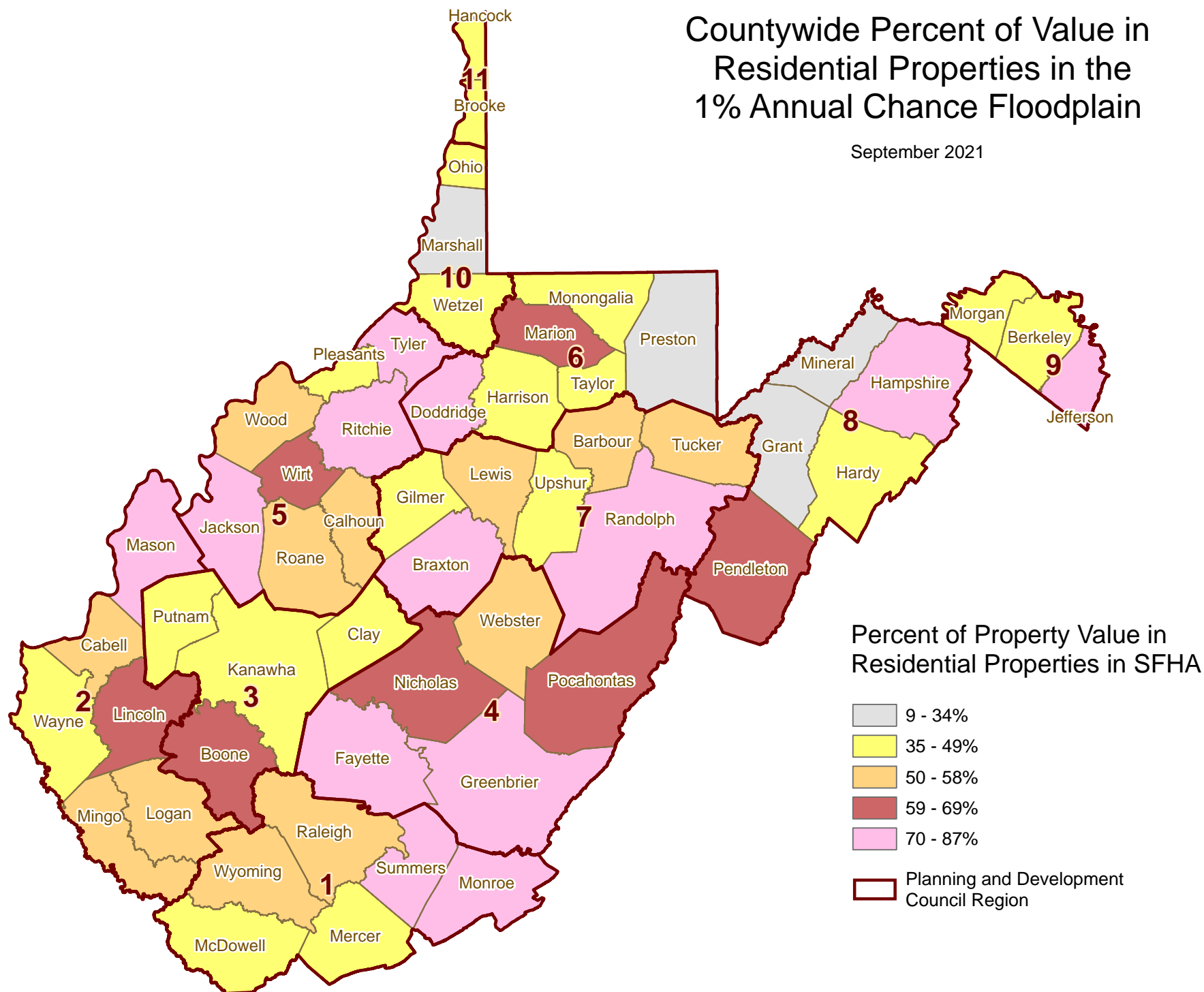
Countywide Percent of Residential Properties in the 1% Annual Chance Floodplain

September 2021



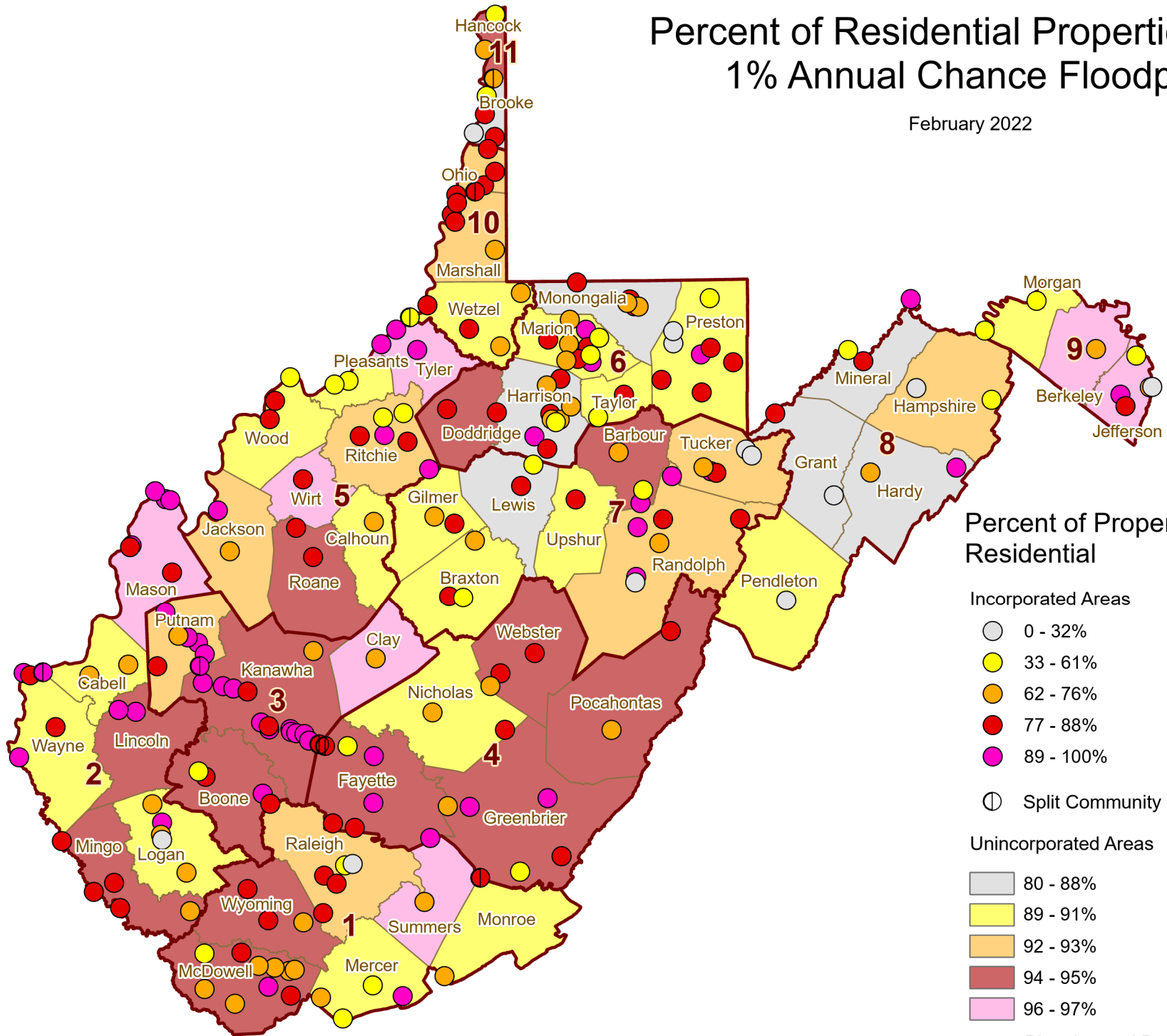
Countywide Percent of Value in Residential Properties in the 1% Annual Chance Floodplain

September 2021



Percent of Residential Properties in the 1% Annual Chance Floodplain

February 2022



Percent of Properties that are Residential

Incorporated Areas

- 0 - 32%
- 33 - 61%
- 62 - 76%
- 77 - 88%
- 89 - 100%

Split Community

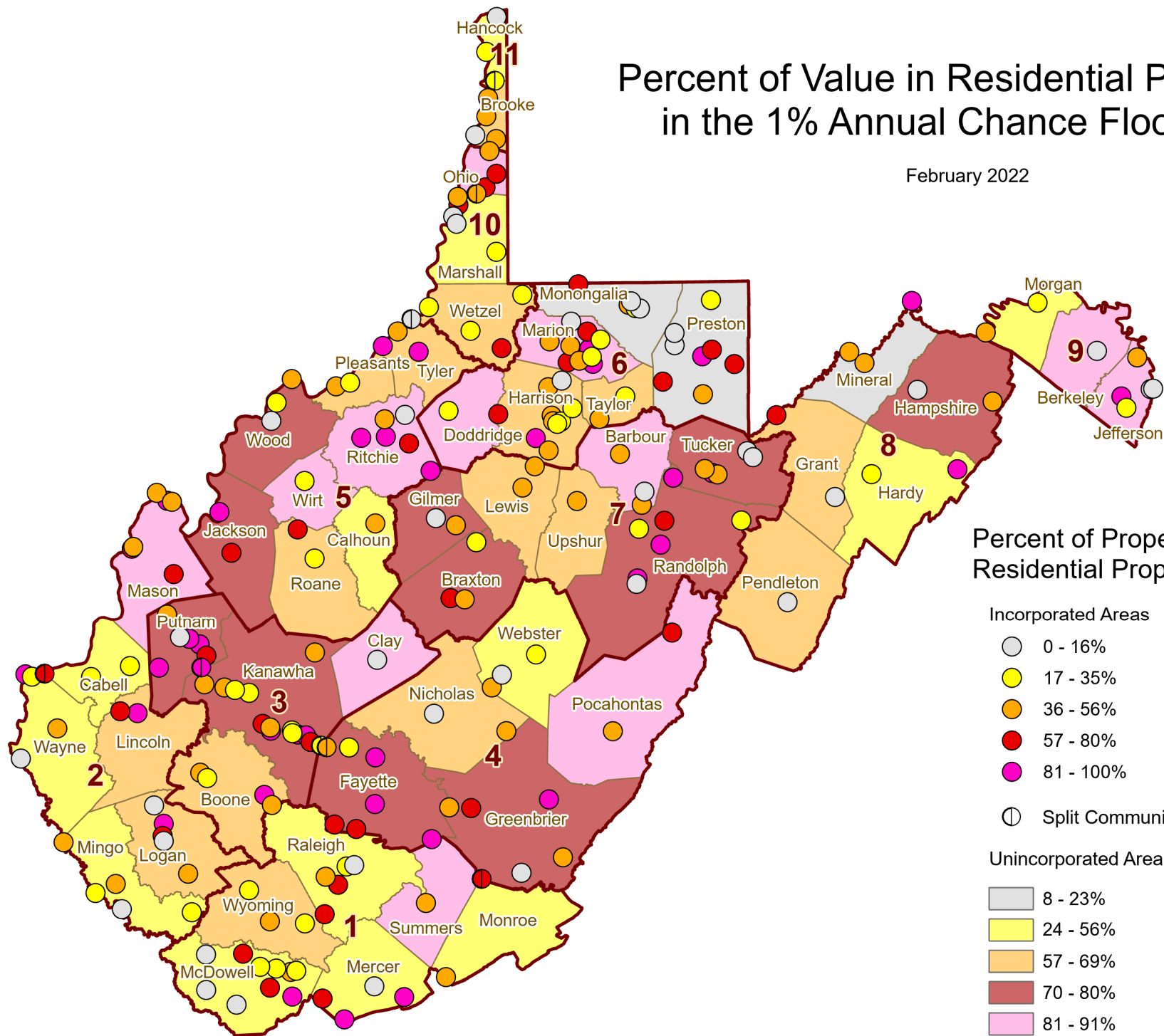
Unincorporated Areas

- 80 - 88%
- 89 - 91%
- 92 - 93%
- 94 - 95%
- 96 - 97%

Planning and Development Council Region

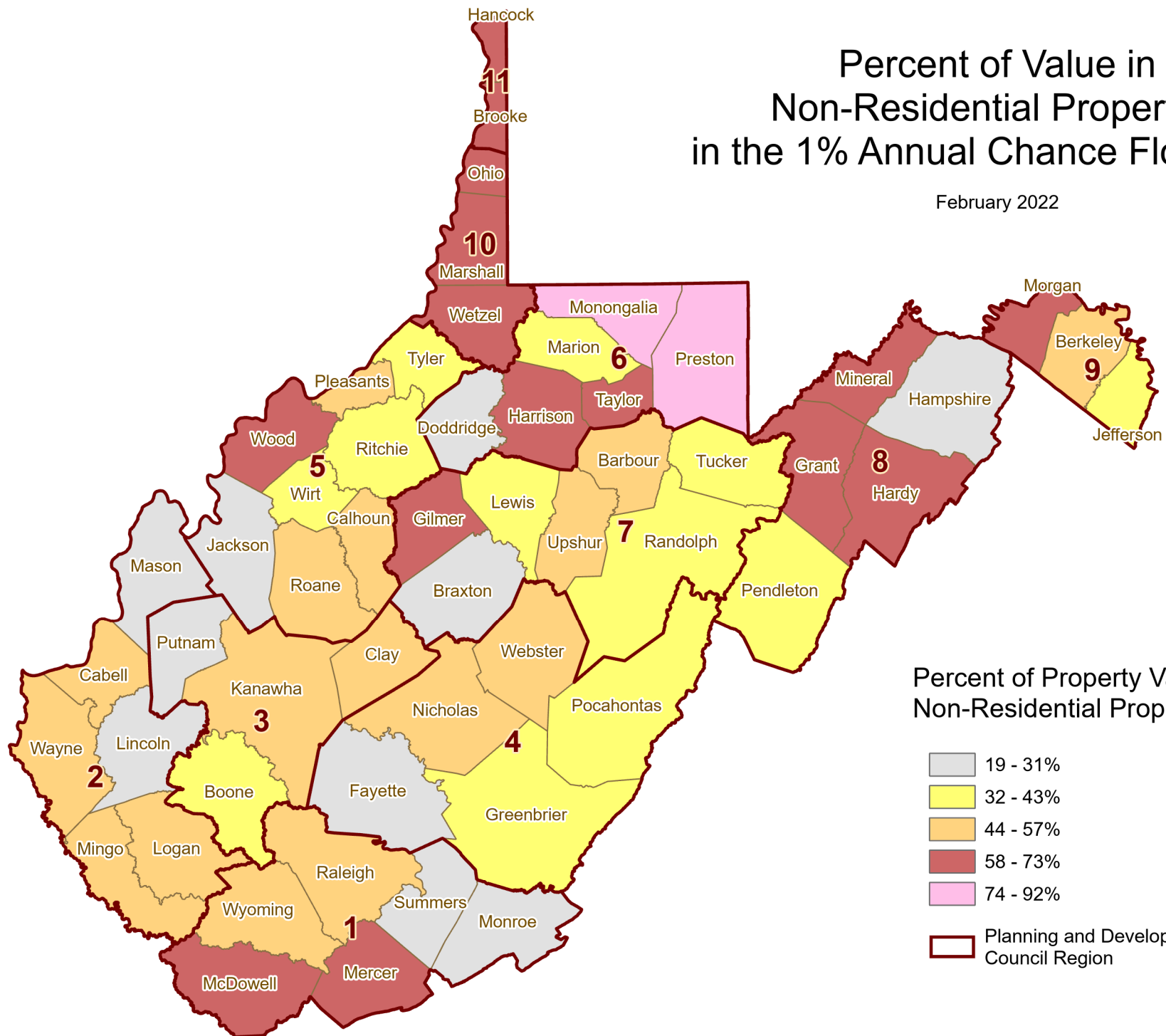
Percent of Value in Residential Properties in the 1% Annual Chance Floodplain

February 2022



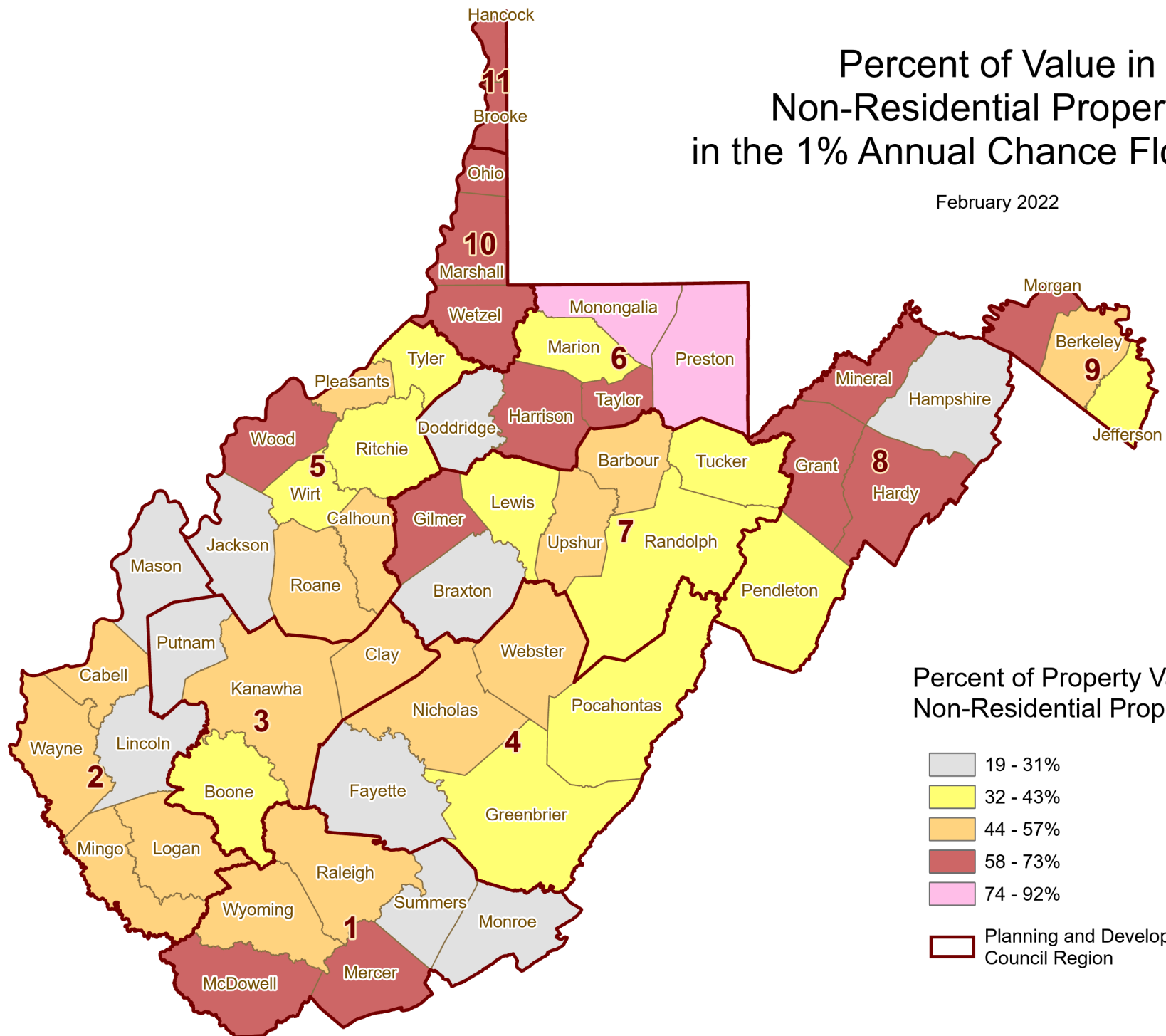
Percent of Value in Non-Residential Properties in the 1% Annual Chance Floodplain

February 2022



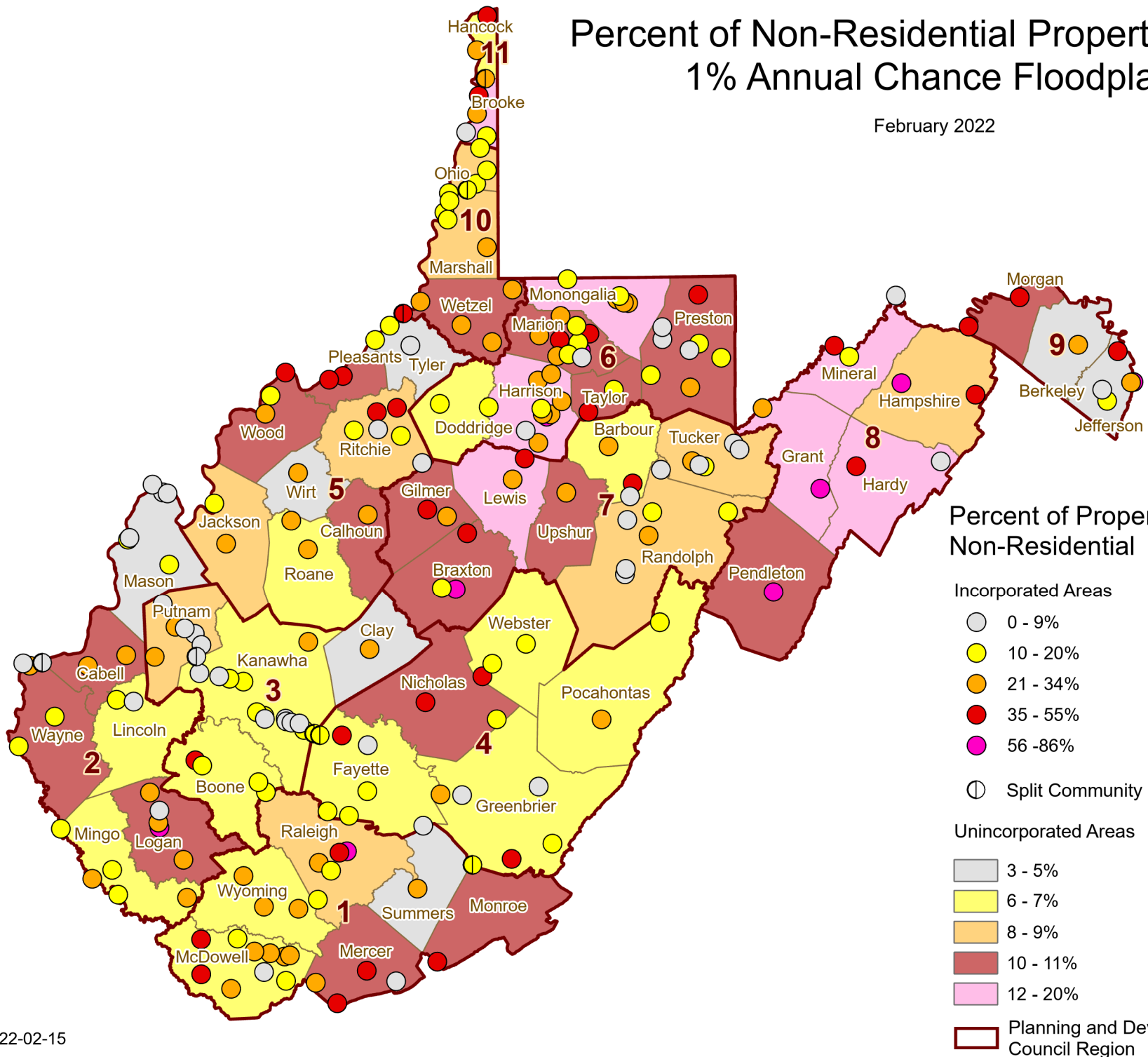
Percent of Value in Non-Residential Properties in the 1% Annual Chance Floodplain

February 2022



Percent of Non-Residential Properties in the 1% Annual Chance Floodplain

February 2022



Percent of Value in Non-Residential Properties in the 1% Annual Chance Floodplain

February 2022

