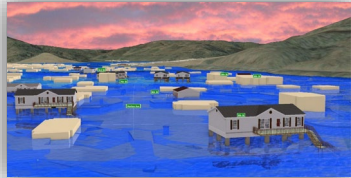




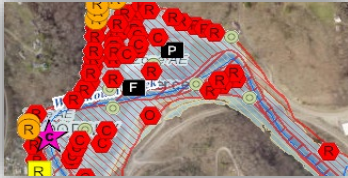
# WV Flood Resiliency Framework

*A virtual hub of risk assessment, visualization, planning, and training resources for building community flood resiliency in WV*

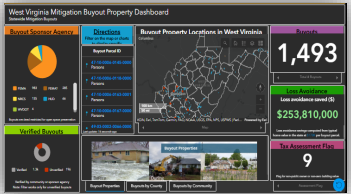
## Flood Visualizations



## WV Flood Tool



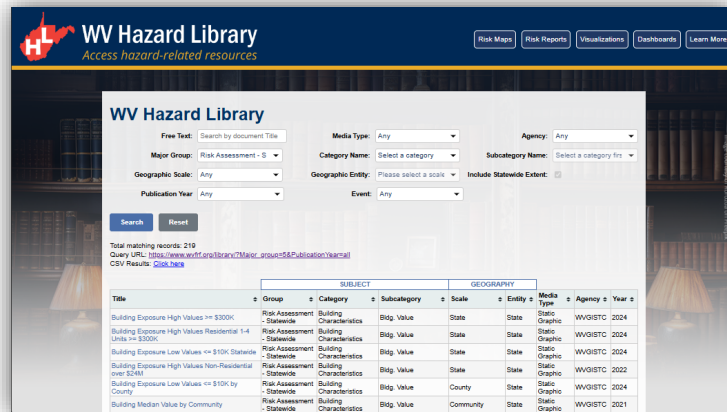
## Flood Dashboards



## WV Risk Explorer



## Example Risk Tools



## Hazard Library

## RISK TOOLS

- WV Risk Explorer
- WV Flood Tool
- Visualizations
- Dashboards

10 Geographic Scales

## COMMUNITY ENGAGEMENT

- Focused Outreach Meetings
- Flood Symposium
- Resiliency Tools & Products
- Learning Resources & Reports



## Community Engagement Meeting

## HAZARD LIBRARY

Search online hazard resources by title, subject, media, event, geography, data, etc.

## STAKEHOLDERS

- Risk Reduction Associates
- Emergency Responders
- Floodplain Managers
- Local Officials
- Volunteers
- Public



## Flood Symposium Stakeholders

# Stakeholders





# Tool Usage by Stakeholder Groups

## *Stakeholder Groups of anticipated usage of Risk Tools and Hazard Library*

		Property-Level Scale				All Geographic Scales	
#	Stakeholders	Property Viewer	Flood Tool			Risk Explorer Tools	Hazard Library <sup>3</sup>
			Public	Expert	RiskMAP		
1	<b>Floodplain Managers<sup>1</sup> – FM</b> (includes surveyors and engineers)	FM		FM	FM	FM	FM-Learning
2	<b>Risk Reduction Associates - RRA</b> (planners, researchers, mitigation specialists, etc.)	RRA		RRA	RRA	RRA	RRA-Studies
3	<b>Emergency Responders – ER</b>	ER			ER	ER	ER-Learning
4	<b>Local Officials</b>	Officials	Officials			Officials	Off-Learning
5	<b>Public</b> (includes realtors and insurance officials)	Public	Public				Pub-Learning
6	<b>Volunteers – Vols.</b> (VOAD, Charities, etc.)	Vols.	Vols.				Vol-Learning



*Popularity of Tools<sup>2</sup> by Stakeholder Group*

<sup>1</sup> **Floodplain Managers** may be representatives of other stakeholder groups such as E-911 Directors or Mayors.

<sup>2</sup> **Floodplain Managers** and **Risk Reduction Associates** stakeholders have the highest demand for flood resiliency tools.

<sup>3</sup> **All Stakeholders** benefit by using the Hazard Library which is broadly categorized into learning, study, and reference resources. The primary stakeholder group for the WV Property Viewer is the **Public**, while the main stakeholder group for WV Flood Tool is the **Floodplain Managers**, and for the WV Risk Explorer various **Risk Reduction Specialists**.





# Community Engagement

***Community Engagement*** *modes to convey flood risk and build resiliency*

## COMMUNITY ENGAGEMENT METHODS

### **Focused Outreach Meetings**

- Risk Communications
- Risk Reduction Meetings

### **Resiliency Tools & Products**

- Risk Assessments (Detailed or Summarized)
- Mitigation Measures (Planned or Implemented)
- Flood Visualizations

### **Learning Resources & Published Reports**

- Best Practice Guides and Training Materials
- Lessons Learned
- Planning Documents
- Research and Policy Papers

*Risk information communicated via WV Risk Tools, WV Hazard Library, and other resources.*



Flood Symposium **Stakeholders**



Flood Symposium **Project Team**

# Community Engagement



White Sulphur Springs, WV (11/17/2022)



Rainelle, WV (11/18/2022)

## ■ Feedback desired from Focus Groups:

- What lessons were learned from the immediate response and longer-term recovery from the 2016 flood?
- What priorities are needed for a stronger flood response and recovery plan in the event of a future flood?


## ■ Feedback of Flood Study Products:

- Flood Characteristics and Models
- Flood Risk Assessment (vulnerability, exposure, loss)
- Mitigation Maps
- Flood Visualization Tools



# WV Hazard Library

***Hazard Library of online hazard resources including data, documents, and media searchable by title, subject, event, geography, and more.***

WV HAZARD LIBRARY		
TOPICS	MEDIA TYPES	SEARCH TYPES
<ul style="list-style-type: none"><li>• <b>Risk Assessment &amp; Planning</b><ul style="list-style-type: none"><li>○ State Risk Assessments</li><li>○ Local Risk Assessments</li><li>○ Planning Resources</li><li>○ Web Tools</li></ul></li><li>• <b>Mitigation</b><ul style="list-style-type: none"><li>○ Flood Insurance</li><li>○ Floodplain Management</li><li>○ Floodplain Mapping</li><li>○ Other Mitigation Measures</li></ul></li><li>• <b>Flood Disaster Events</b><ul style="list-style-type: none"><li>○ Flood Event</li><li>○ Flood Research</li></ul></li></ul>	<ul style="list-style-type: none"><li>• 3D Movie</li><li>• Bldg. Profile</li><li>• Dashboard</li><li>• Data-GIS</li><li>• Data-Metadata</li><li>• Data-Table</li><li>• Flyer</li><li>• Graphic</li><li>• Guide</li><li>• Journal Article</li><li>• Letter</li><li>• News Article</li><li>• Picture</li><li>• Plan</li><li>• Poster</li><li>• Report</li><li>• Slides</li><li>• Social Media</li><li>• Static Map</li><li>• Story Map</li><li>• Video</li><li>• Viewshed</li><li>• Web Info</li><li>• Web Tool</li></ul>	<ul style="list-style-type: none"><li>• Agency</li><li>• Downloadable Data</li><li>• Event Disaster</li><li>• Event Meeting</li><li>• Geographic Scale<ul style="list-style-type: none"><li>○ Entity</li></ul></li><li>• Media Type</li><li>• Publication Date</li><li>• Subject<ul style="list-style-type: none"><li>○ Major Group</li><li>○ Category</li><li>○ Subcategory</li><li>○ <i>cross-indexing</i></li></ul></li><li>• Stakeholder Type</li><li>• Title (free text search)</li><li>• Predefined Searches<ul style="list-style-type: none"><li>○ Visualizations</li><li>○ Floodplain Management Key Materials</li></ul></li></ul> 



# WV Hazard Library

***Hazard Library of online hazard resources including data, documents, and media searchable by title, subject, event, geography, and more.***



COLLECTION	MAJOR GROUP	CATEGORIES
Risk/Assessment Planning	(1) Planning Resources	WV Hazard Plans and Resources, Risk Reduction Meetings
	(2) Risk Assessment Web Tools	Online Risk Assessment Tools
	(3) State Risk Assessments	Riverine Flood Hazard Resources: Risk Assessment Indicators, Cumulative Risk Index, Studies, Reports, Maps, Visualizations, Data, etc. Other hazards like landslides & dam failure
	(4) Local Risk Assessments	
Mitigation Measures	(5) Floodplain Mapping	Mapping Statuses, Risk MAP Studies and Outreach Resources
	(6) Floodplain Management	Floodplain Management Guides, Model Ordinance, Building Permits, Flood Elevation Determinations, Legal and Planning Guidance, WVFMA Conference Presentations, etc.
	(7) Flood Insurance	NFIP Policy Information and Insurance Penetration Statistics
	(8) Other Mitigation Measures	Mitigation Guides, Structural & Nonstructural Mitigation Measures, Flood Warning Systems, Flood Safety Tips, Mitigation Funding, Mitigation Planning & Priorities, etc.
Flood Disaster Events	(9) Flood Disaster Events & Research	Multi-media resources for Flood Events from 1870 to present, Flood Fatalities, Risk Behaviors

9 Major Group Subjects

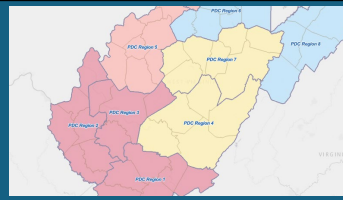


## Political Boundaries

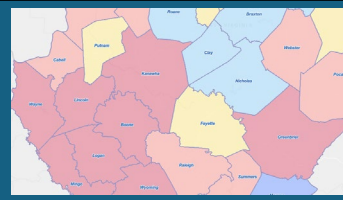
**State**



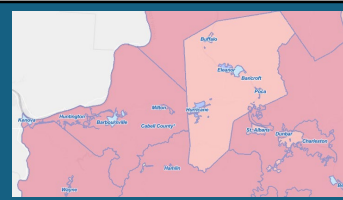
**PDC Regions (11)**



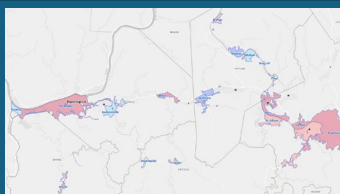
**Counties (55)**



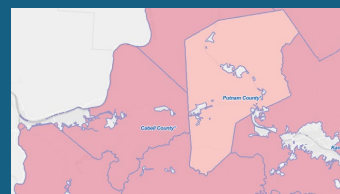
**Communities (284)**



**Incorporated  
Places  
(229)**

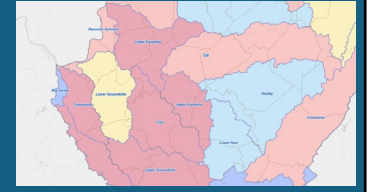


**Unincorporated  
Areas  
(55)**

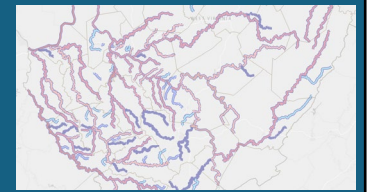


## Drainage Areas / Streams

**Watersheds  
(33)**



**Streams/Rivers  
(156)**



## Property Levels

**Parcels**



**Buildings**







# Risk Tools at Multiple Scales



GEOGRAPHIC SCALES		APPLICATIONS				WVFRF TOOLS		
Geographic Unit	# Units	Floodplain Management & Mitigation	FEMA Mapping	Risk Planning	Disaster Management	WV Risk Tools (WV Flood Tool & WV Explorer)	Flood Visualization Tools	Hazard Library (Document Center Tool)
PROPERTY LEVEL								
Structures <sup>1</sup>	98,000	X	X	X	X	Yes	Yes	Yes
Parcels	275,000	X	X	X	X	Yes		Yes
Other Features <sup>2</sup>		X	X	X	X	Yes		Yes
COMMUNITY LEVEL								
Incorporated Places	211	X	X	X	X	Yes	Yes	Yes
Unincorporated Areas	55	X	X	X	X	Yes	Yes	Yes
Communities (NFIP) <sup>3</sup>	266	X	X	X	X	Yes	Yes	Yes
COUNTY-REGION-STATE LEVEL								
Counties	55	X	X	X	X	Yes	Yes	Yes
Regions (RPDCs)	11	X	X	X	X	Yes		Yes
State	1	X	X	X	X	Yes		Yes
DRAINAGE LEVEL								
Watersheds	32	X	X	X	X	Yes		Yes
Streams (named)	6,748	X	X	X	X	Yes	Yes	Yes

## NOTES:

<sup>1</sup> Primary structures located in high-risk effective and advisory floodplains (1%-annual-chance flood)

<sup>2</sup> Other Features include roads, bridges, National Register Areas, flood mitigation structures (dams, levees, floodwalls)

<sup>3</sup> Total 284 communities in state: 266 NFIP; 18 incorporated places not in NFIP

## ■ Risk Assessment Tools

- Localized riverine flood risk assessment by quantifying and aggregating detailed building-level data at multiple scales
- Help identify the communities most at risk of riverine flooding for efficient allocation of limited mitigation resources

### Building/Property-Level



### Aggregated



## ■ Mitigation Assessment Tools

- Quantifies mitigation efforts such as elevation, relocation, and buyouts and calculation of loss estimates
- Enable planners and decision-makers to evaluate past and ongoing efforts, identify gaps, and prioritize future investments

### Mitigated Structures Dashboard

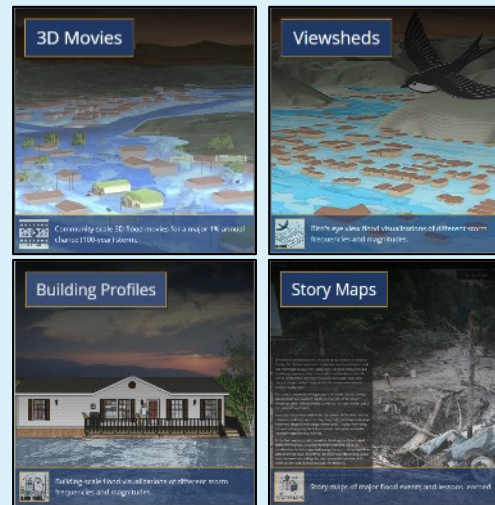


### Open-Space Mitigation Dashboard



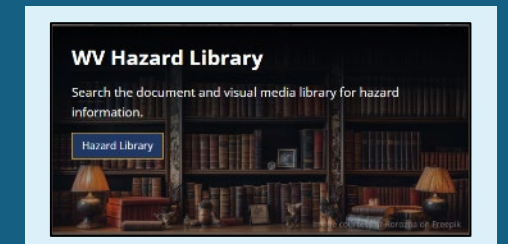
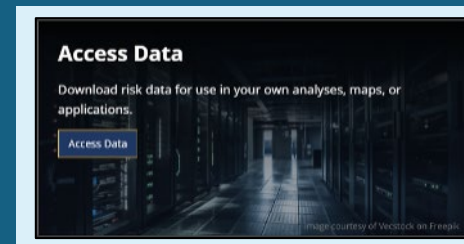
## ■ Risk Communication Tools

- Scenario-based 2D and 3D visualizations for effective risk communication
- Facilitate risk comprehension for various stakeholders to support informed decision-making and encourage public engagement



## ■ Hazard Library and Data Access Tools

- Access to online hazard resources including data, documents, and media searchable by title, subject, event, geography, and more.
- Allow users to access comprehensive datasets for use in analyses, maps, or applications to support planning, research, and decision-making related to hazard mitigation and response





# WV Flood Risk Index & Factors



## Overall Flood Risk

### (1) FLOODPLAIN CHARACTERISTICS

Floodplain Area

Floodplain Length<sup>1 2</sup>

Floodplain Depth<sup>1 2</sup>

Flood Disaster Frequency

### (2) BUILDING EXPOSURE

Building Floodplain Count<sup>1 2</sup>

Building Floodway Count<sup>1 2</sup>

Building Floodplain Ratio<sup>2</sup>

Building Density<sup>1 2</sup>

### (3) BUILDING CHARACTERISTICS

Building Value<sup>1 2</sup>

Mobile Homes

Basement

One Story

Building Year\*

### (4) CRITICAL INFRASTRUCTURE

Essential Facilities

Roads Inundated

### (5) COMMUNITY ASSETS

Historical Assets

Non-Historical Assets

### (6) BUILDING DAMAGE LOSS

Substantial Damage Estimates<sup>\*1 2</sup>

Previous Claims

Repetitive Losses

### (7) PEOPLE / SOCIAL VULNERABILITIES

Population in Floodplain

Population Displaced

WV Social Vulnerability Index

### (8) OTHER HAZARDS

Landslides

Karst\*\*

Dam/Levee Failure\*\*

Used for the Index

\* Multiple Indicators

\*\* In Progress

<sup>1</sup> River/Stream Indicator

<sup>2</sup> Watershed Indicator



# WV Risk Tools & Risk Factors



## *Analytical & Visualization Tools at multiple scales*

### WV RISK TOOLS

#### 2 KEY FLOOD RISK TOOLS

#### 10 GEOGRAPHIC SCALES

*<< Aggregate & Property Levels >>*

- **WV Risk Explorer**

- Risk Maps
- Risk Reports
- Bldg. Risk Tools
- Dashboards
- Visualizations
- Data Access

*<< Property Level >>*

- **WV Flood Tool**

- WV Property Viewer

*<< Political Boundaries >>*

- 1) State
- 2) Region
- 3) County
- 4) Community
- 5) Incorporated Place
- 6) Unincorporated Area

*<< Drainage Areas / Streams >>*

- 7) Watershed
- 8) Stream/River

*<< Property Levels >>*

- 9) Parcel
- 10) Building

## *Risk Factors for riverine hazard assessments*

### WV RISK FACTORS

#### RISK INDICATORS

#### ENVIRONMENTS

- Floodplain Characteristics
- Building Exposure
- Building Characteristics
- Critical Infrastructure
- Community Assets
- People/Social Vulnerabilities
- Other Hazards

- Physical (Flood Factors, Topography, Hydrology, Hydraulics)
- Human (People)
- Social
- Economic
- Institutional
- Manmade (Buildings, Roads)





# Risk Tools Comparison



## WV Flood Tool

Determine the degree of flood risk for a *specific area or property* using the Public and Expert Views. View building risk assessments and mitigation measures using the Risk Map View.

### Primary Components:

- Public View
- Expert View (Floodplain Management)
- RiskMap View (Risk Reduction)
- Reference Layers & Basemaps
- Property Search Tools
- Links to External Viewers & Resources



### Applications:

- Flood Risk Determinations at Property Level
- Floodplain Management
- Mitigation Measures
- Damage Assessments
- Property Identification
- Flood Visualizations & Risk Communications
- CRS Map Credits
- Other Hazards

## WV Risk Explorer

View and analyze riverine flood risk at the *aggregate level* for community, county, region, watershed, and stream scales. *Compare risk* among different geographic entities, complete with risk scores and rankings, from the building level to state scales.

### Primary Components:

- Risk Maps Tool
- Risk Reports Tool
- Risk & Mitigation Dashboard Tools
- Building Level Risk Tools
- Flood Visualization Tools
- Data linkages to WV Flood Tool & Hazard Library



### Applications:

- Plans (Resiliency, Emergency Operations, Hazard Mitigation)
- Risk Studies (Risk MAP, Risk Reduction, Community Focused)
- Mitigation Measures, Tracking & Monitoring
- Flood Visualizations & Risk Communications
- CRS Programming Variables
- Other Hazards