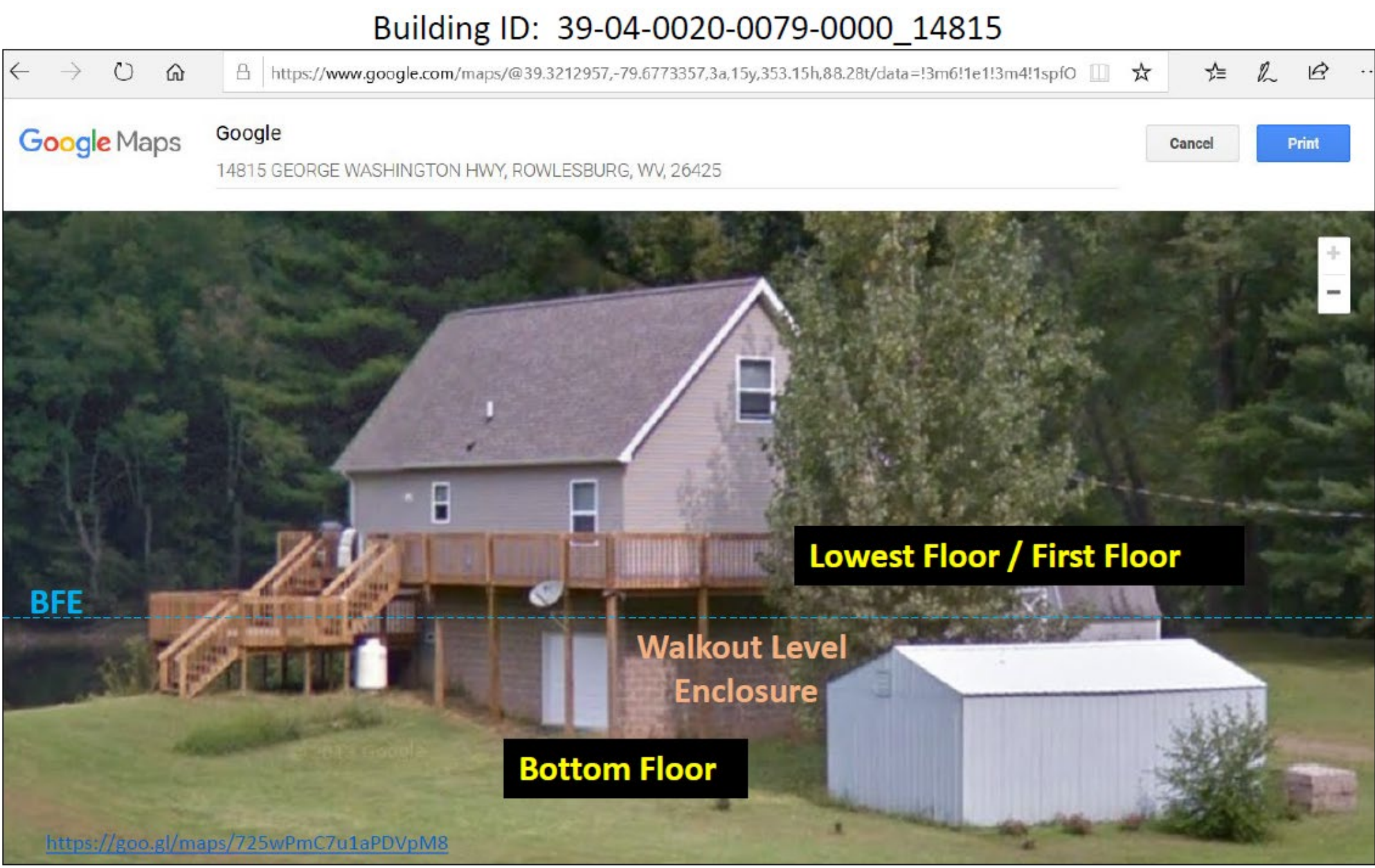


Hazard Mitigation

Structure built with First Floor Height (FFH) above Design Flood Elevation (DFE = BFE + Freeboard)



Elevation Certificates are beneficial for Floodplain Management and Risk Assessments

Communities may elect to participate in hazard mitigation buyout programs sponsored by FEMA and other agencies aimed at repetitive loss properties. Parcels are typically deed-restricted to maintain open space and prevent future losses.

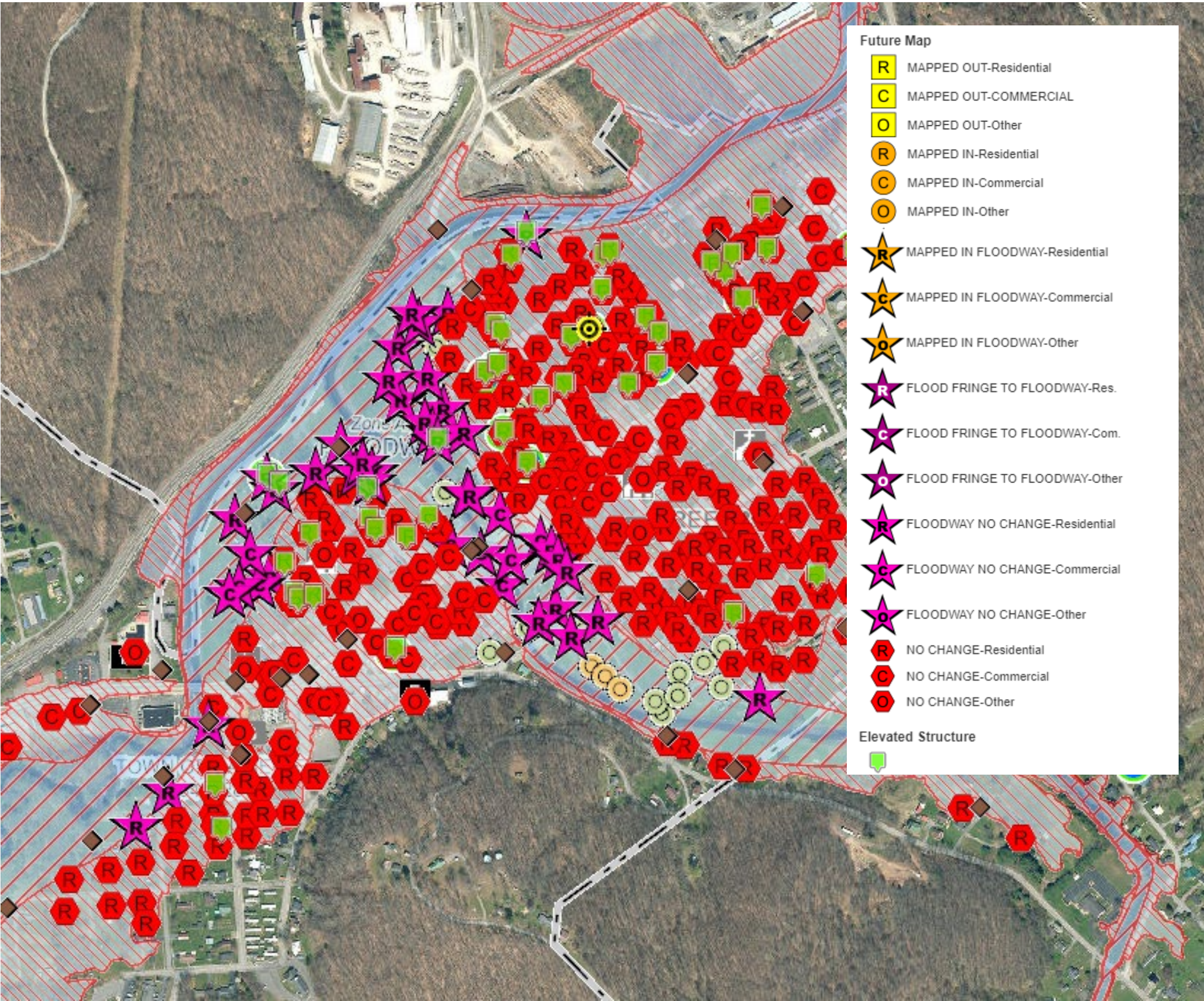


Logan, WV: Hazard Mitigation Buyout parcels along Copperas Mine Fork, Island Creek

Structure Level Risk Assessment

At-risk buildings are depicted with symbols and colors representing severity of risk and changes in status, e.g. “Mapped In” or “Mapped Out.”

Buildings in the Floodway are at greatest risk of loss.

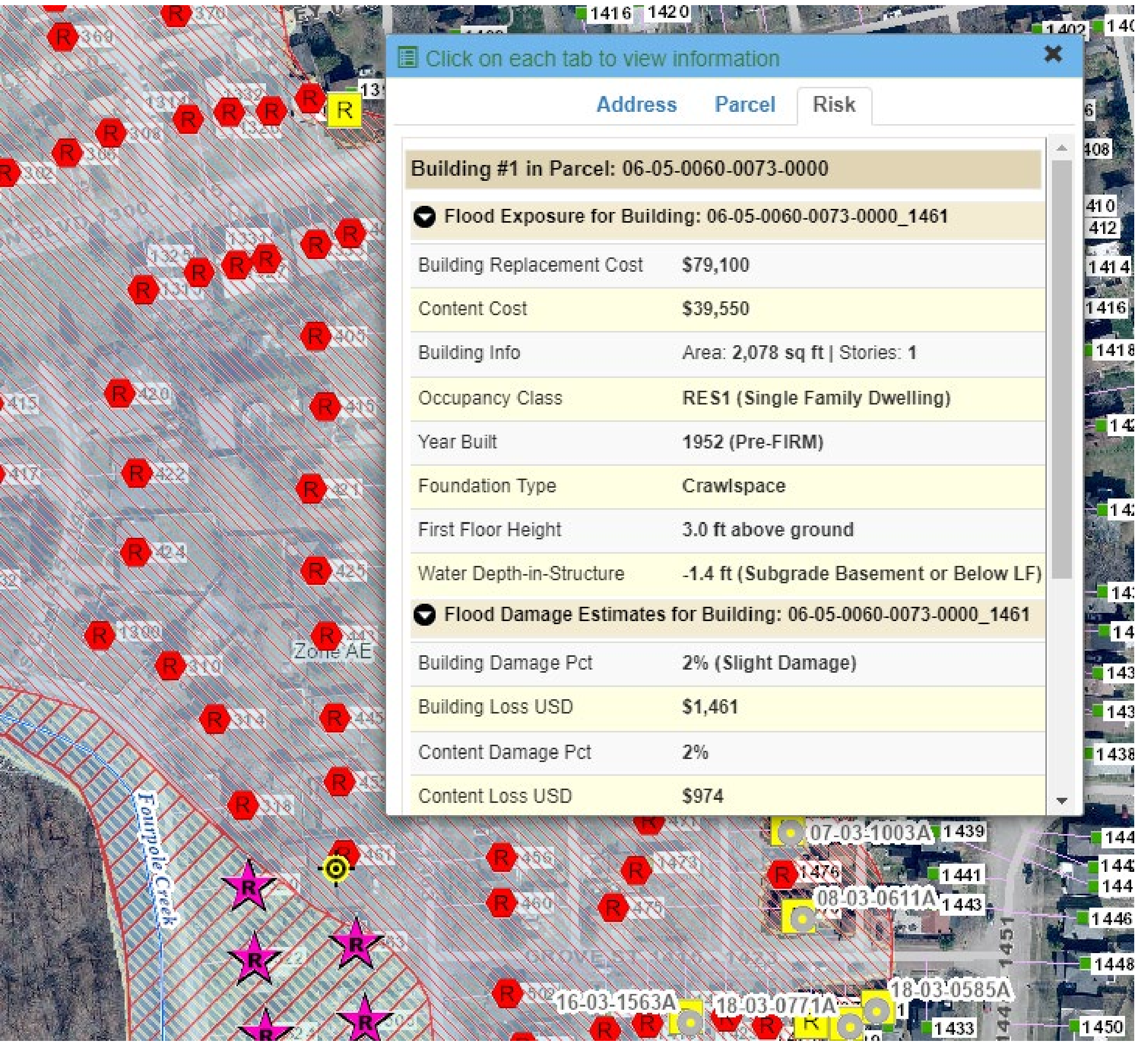


Physical Damage Estimates

- Based on flood depth
- Utilize FEMA loss formulas

Building Types / Value information

- Based on flood depth

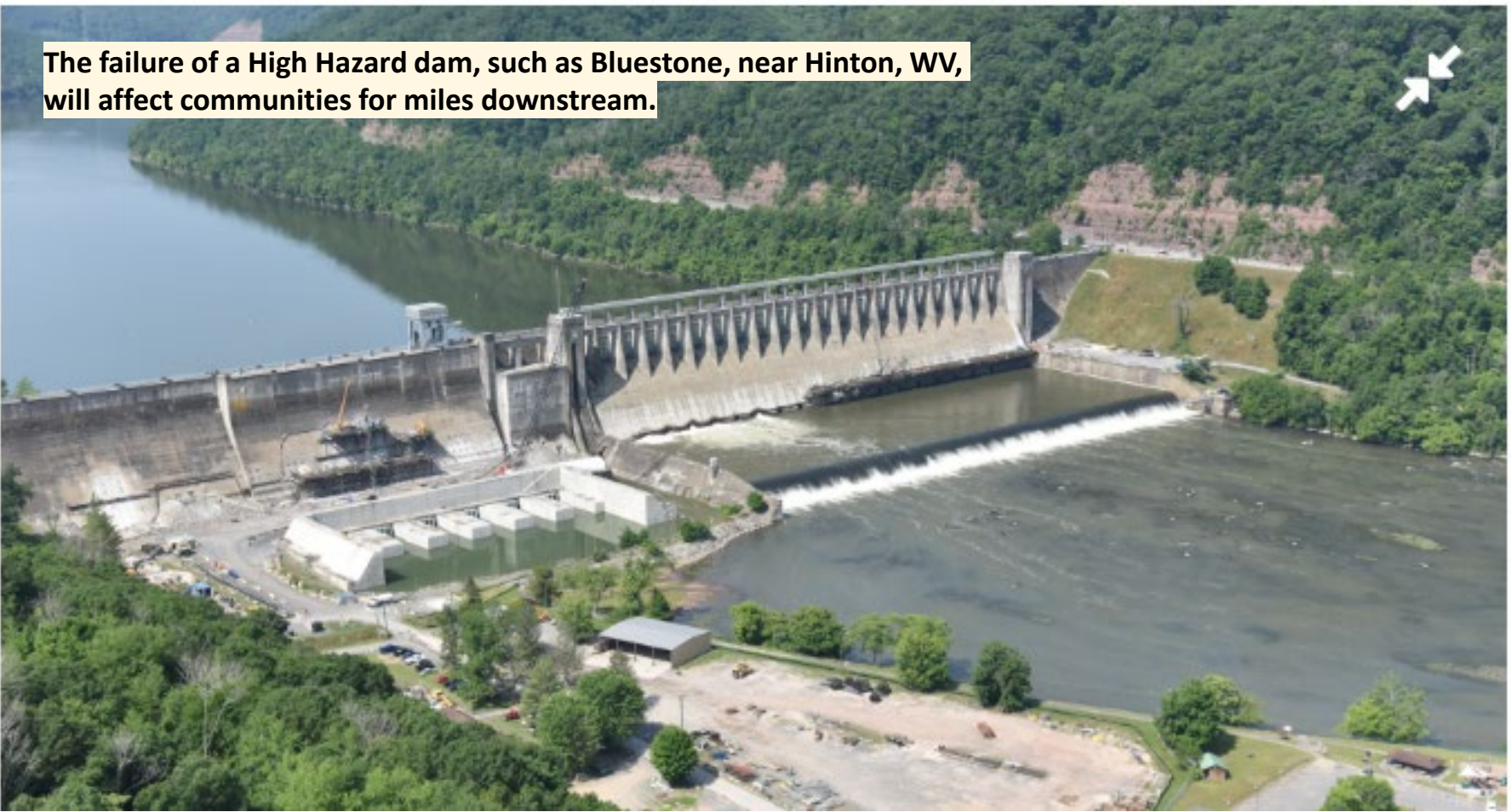
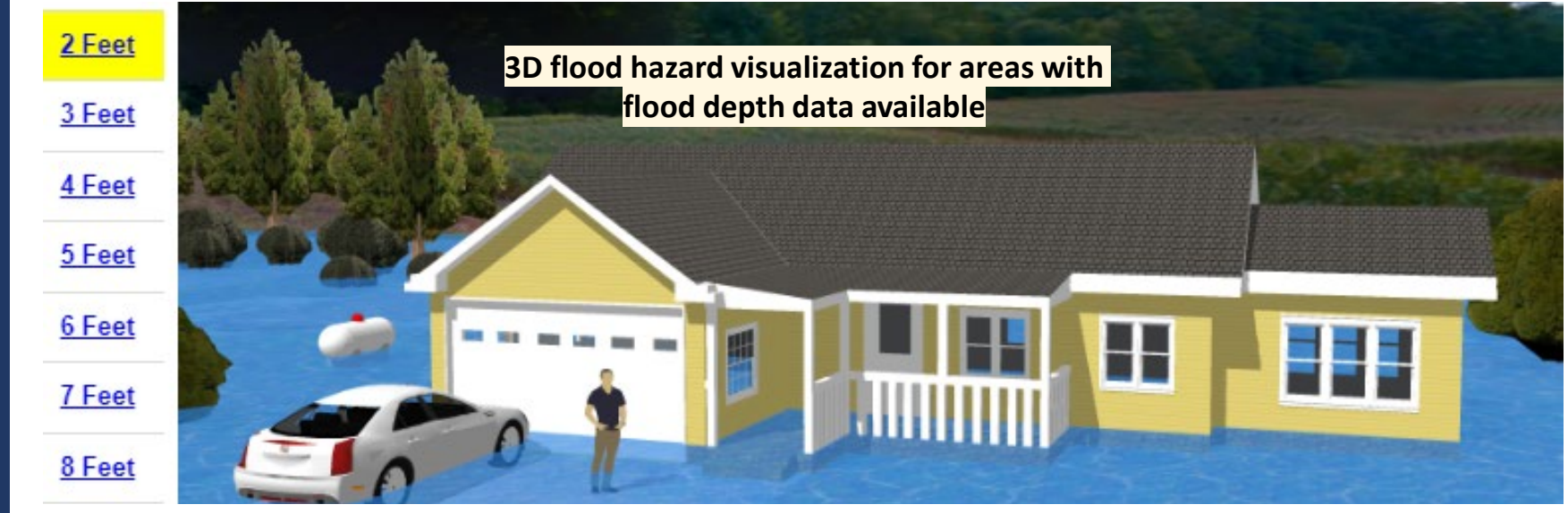


Building information and loss estimates for building in Huntington, Cabell County

Multi-Hazard Analysis

Landslide susceptibility along the Guyandotte River in Logan County

- Damaged homes along Pine Street correlate with areas of strong susceptibility as determined by landslide modeling



The failure of a High Hazard dam, such as Bluestone, near Hinton, WV, will affect communities for miles downstream.