

WV RiskMAP Flood Study Project Status

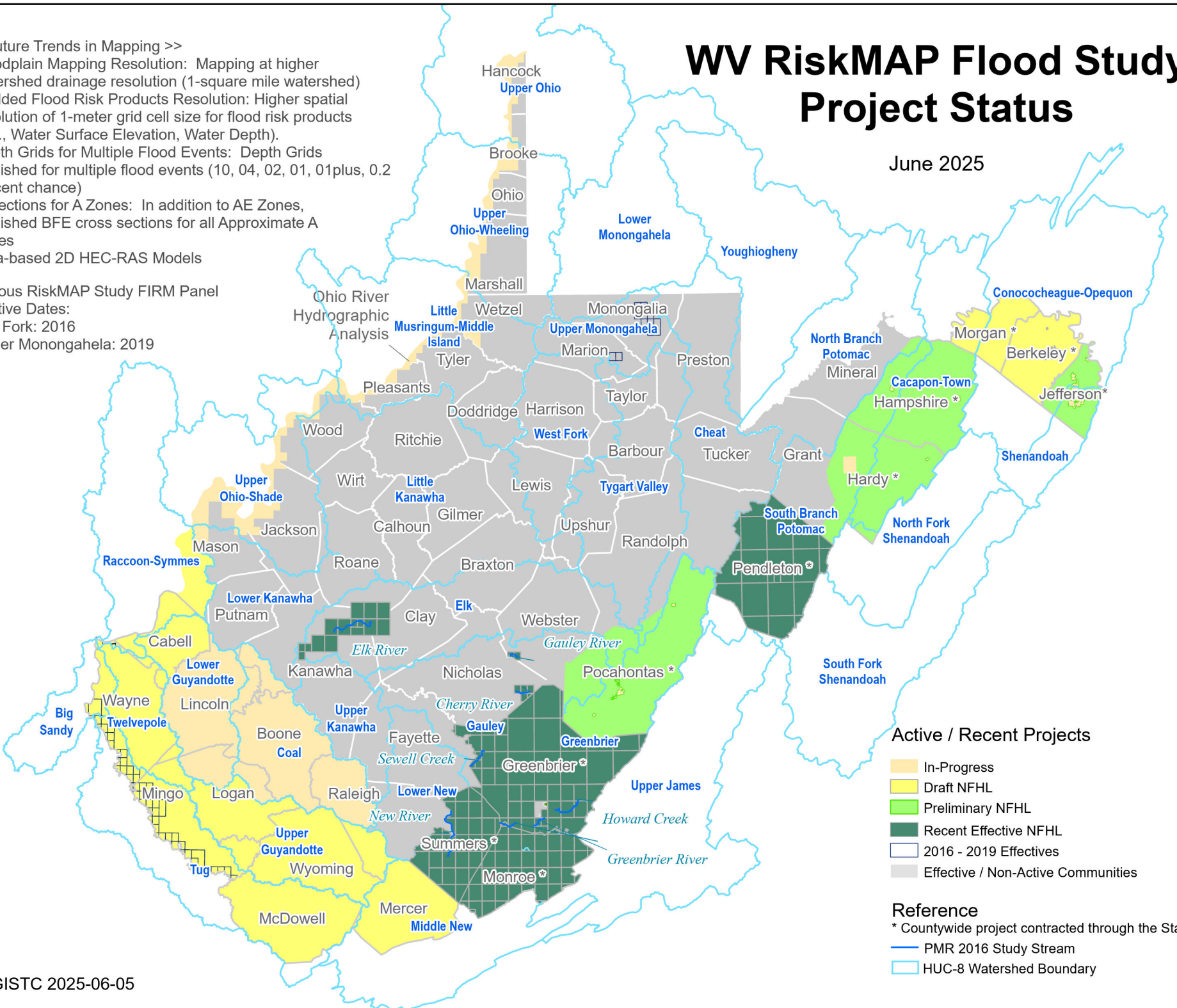
June 2025

<< Future Trends in Mapping >>

- Floodplain Mapping Resolution: Mapping at higher watershed drainage resolution (1-square mile watershed)
- Gridded Flood Risk Products Resolution: Higher spatial resolution of 1-meter grid cell size for flood risk products (e.g., Water Surface Elevation, Water Depth).
- Depth Grids for Multiple Flood Events: Depth Grids published for multiple flood events (10, 04, 02, 01, 01plus, 0.2 percent chance)
- X-Sections for A Zones: In addition to AE Zones, published BFE cross sections for all Approximate A Zones
- Area-based 2D HEC-RAS Models

Previous RiskMAP Study FIRM Panel

- Effective Dates:
- Tug Fork: 2016
 - Upper Monongahela: 2019



Active / Recent Projects

- In-Progress
- Draft NFHL
- Preliminary NFHL
- Recent Effective NFHL
- 2016 - 2019 Effectives
- Effective / Non-Active Communities

Reference

- * Countywide project contracted through the State
- PMR 2016 Study Stream
- HUC-8 Watershed Boundary